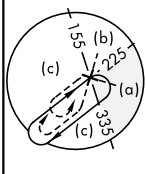
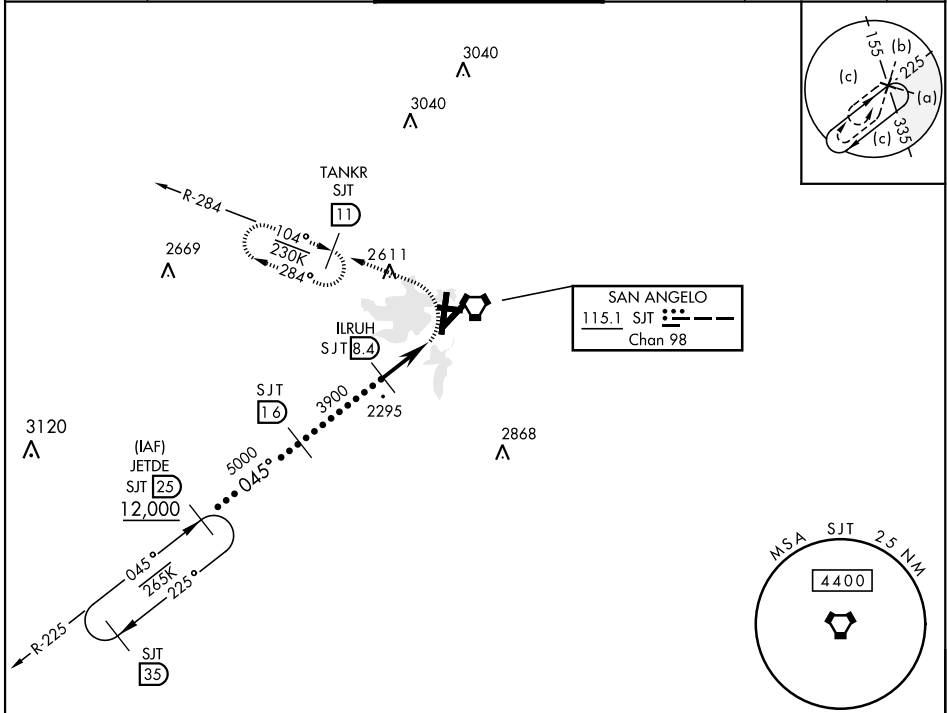
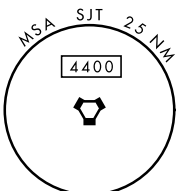


HI-VOR/DME or TACAN RWY 3

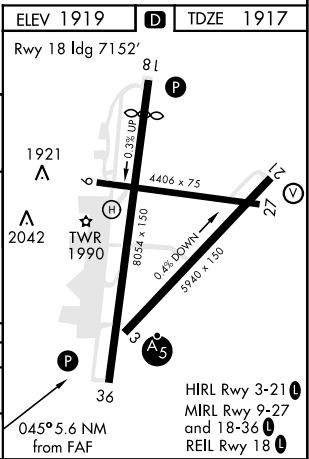
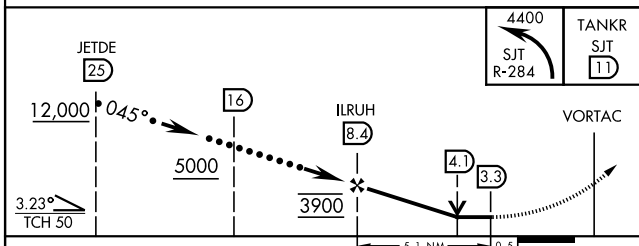
VORTAC SJT 115.1 Chan 98	APCH CRS 045°	Rwy Idg TDZE 1917 Arprt Elev 1919	AL-367 [USAF]	SAN ANGELO RGNL MATHIS FLD (KSJT)	
RADAR required. * Circling NA for CAT E west of Rwy 18-36.			MALSR A5	MISSED APPROACH: Climbing left turn to 4400 on SJT VORTAC R-284 to TANKR 11 DME and hold.	
ATIS 128.45 319.0	SAN ANGELO APP CON 125.35 354.1	MATHIS TOWER ★ 118.3 0 (CTAF) 284.7	GND CON 121.9 348.6	UNICOM 122.95	ASR



SAN ANGELO
115.1 SJT
Chan 98



EMERG SAFE ALT 100 NM 5100



CATEGORY	C		D		E
S-3	2420-1	503	(600-1)		2420-1¼ 503 (600-1¼)
CIRCLING*	2460-1½ 541 (600-1½)		2480-2 561 (600-2)		2640-2½ 721 (800-2½)

HI-VOR/DME or TACAN RWY 3

SC-3, 11 JUL 2024 to 08 AUG 2024

SC-3, 11 JUL 2024 to 08 AUG 2024

HIRL Rwy 3-21
MIRL Rwy 9-27 and 18-36
REIL Rwy 18