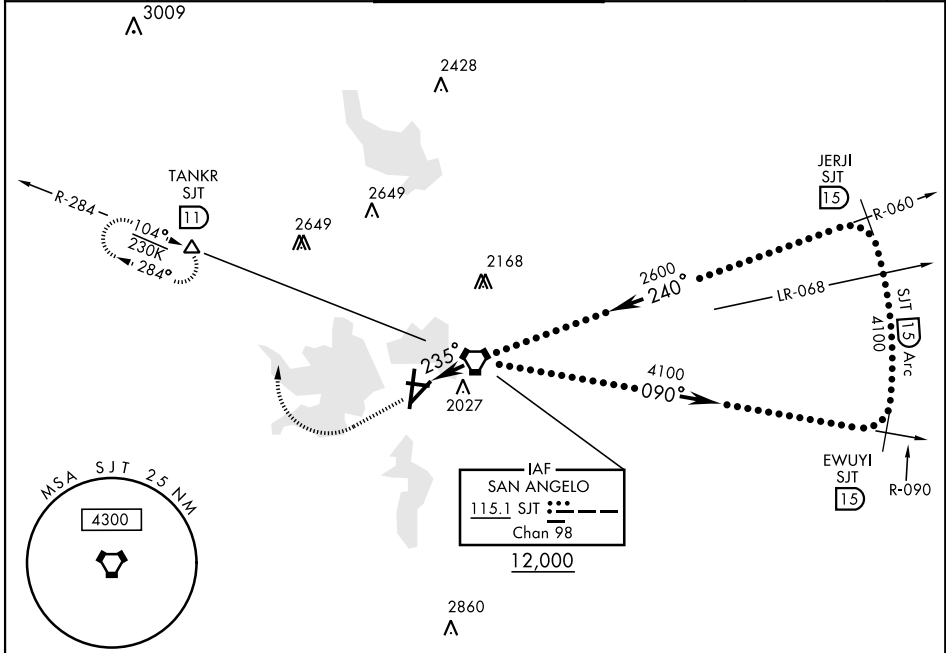


HI-VOR Z or TACAN RWY 21

VORTAC SJT 115.1 Chan 98	APCH CRS 235°	Rwy Idg TDZE 1906 Arpt Elev 1919	AL-367 [USAF]	SAN ANGELO RGNL MATHIS FLD (KSJT)
--	-------------------------	--	---------------	-----------------------------------

DME required.	MISSED APPROACH: Climb to 3000 then climbing right turn to 4400 on heading 360° and SJT VORTAC R-284 to TANKR INT/11 DME and hold, continue climb-in-hold to 4400.
---------------	--

ATIS 128.45 319.0	SAN ANGELO APP CON 125.35 354.1	MATHIS TOWER ★ 118.3 0 (CTAF) 284.7	GND CON 121.9 348.6	UNICOM 122.95	ASR
-----------------------------	---	--	-------------------------------	-------------------------	-----



SC-3, 11 JUL 2024 to 08 AUG 2024

SC-3, 11 JUL 2024 to 08 AUG 2024

EMERG SAFE ALT 100 NM 4700

VGSI and descent angles not coincident (VGSI Angle 3.00/TCH 52) SJT VORTAC 12,000 090° 4100 240° 2600 1.8 NM PAPI (1.8) TCH 59 3.34° 235°	3000 4400 hdg 360°	SJT R-284 TANKR SJT (11)	ELEV 1919 RWY 18 Idg 7152 TDZE 1906 1907 235° 1.8 NM from FAF 4406 x 75 8054 x 150 5940 x 150 0.45 UP 0.35 UP 36 REIL Rwy 18 (P) HIRL Rwy 3-21 (P) MIRL Rwy 9-27, 18-36 (P)
	CATEGORY C D E S-21 2300-1½ 394 (400-1½) CIRCILING* 2500-1½ 581 (600-1½) 2580-2 661 (700-2) NOT AUTHORIZED	EWUYI (15) R-090 JERJI (15) R-060 SJT (15) Arc 4100 4100	

HI-VOR Z or TACAN RWY 21

