

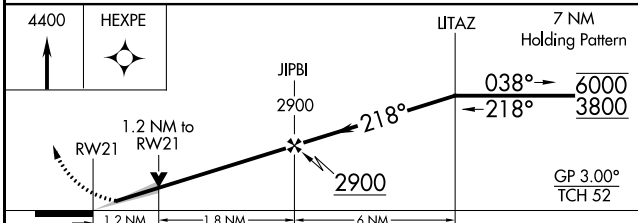
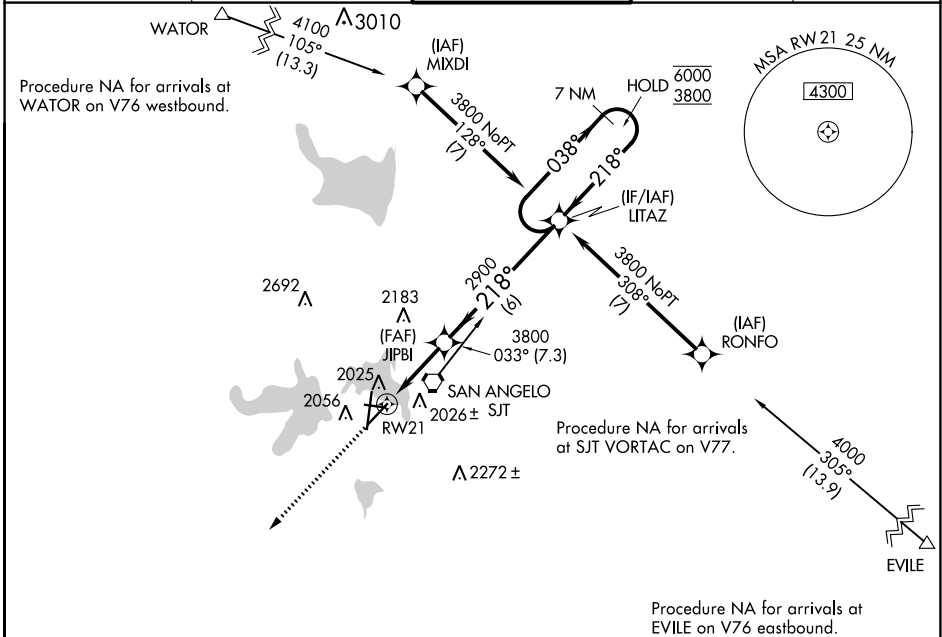
WAAS CH <b>81817</b> <b>W21A</b>	APP CRS <b>218°</b>	Rwy Idg TDZE <b>1906</b> Apt Elev <b>1919</b>
--	------------------------	---

# RNAV (GPS) RWY 21

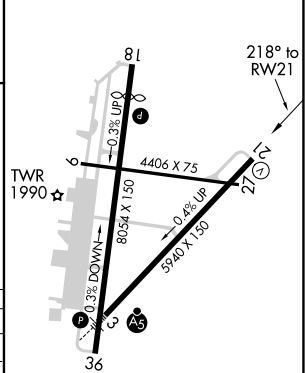
SAN ANGELO RGNL/MATHIS FLD (SJT)

RNP APCH - GPS.		MISSED APPROACH: Climb to 4400 direct HEXPE and hold.		
<p><b>▲</b> For uncompensated Baro-VNAV systems, LNAV/VNAV NA below -8°C or above 54°C. Circling NA for Cat E west of Rwy 18-36.</p>				

ATIS <b>128.45 319.0</b>	SAN ANGELO APP CON ★ <b>125.35 354.1</b>	MATHIS TOWER ★ <b>118.3 (CTAF) 284.7</b>	GND CON <b>121.9 348.6</b>	UNICOM <b>122.95</b>
-----------------------------	---	---	-------------------------------	-------------------------



ELEV 1919	<b>D</b>	TDZE 1906
-----------	----------	-----------



CATEGORY	A	B	C	D	E
LPV DA		2106-1	200 (200-1)		
LNAV/VNAV DA		2250-1	344 (400-1)		
LNAV MDA	2340-1	434 (500-1)	2340-1¼	434 (500-1¼)	
<b>C</b> CIRCLING	2360-1 441 (500-1)	2380-1 461 (500-1)	2500-1½ 581 (600-1½)	2700-2½ 781 (800-2½)	2700-2¾ 781 (800-2¾)

REIL Rwy 18 **1**  
HIRL Rwy 3-21 **1**  
MIRL Rwy 9-27 and 18-36 **1**