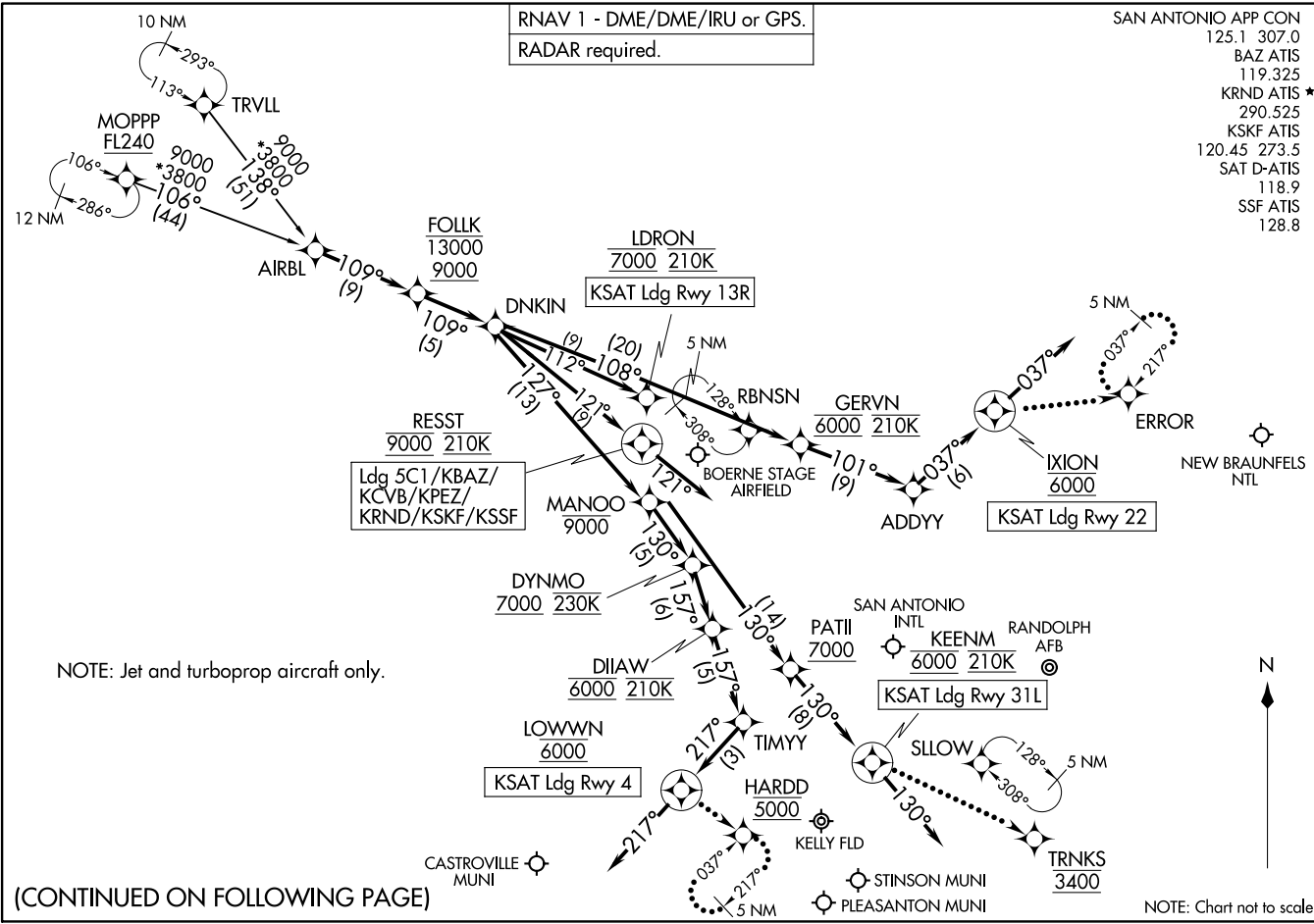


DNKIN ONE ARRIVAL (RNAV)
(AIRBL, DNKINI) 251AN24

(AIRBL, DNKINI) 24025
DNKIN ONE ARRIVAL (RNAV)



SAN ANTONIO, TEXAS

SAN ANTONIO, TEXAS
AL-369 (FAA)

(CONTINUED ON FOLLOWING PAGE)

ARRIVAL ROUTE DESCRIPTION

SAN ANTONIO INTL (KSAT):

From AIRBL on track 109° to cross FOLLK between 9000 and 13000, then on track 109° to DNKIN.

LANDING KSAT RUNWAY 4: From DNKIN on track 127° to cross MANOO at or below 9000, then on track 130° to cross DYNMO at or above 7000 and at 230K, then on track 157° to cross DIIAW at 6000 and at 210K, then on track 157° to TIMYY, then on track 217° to cross LOWWN at 6000, then on track 217°. Expect RADAR vectors to final approach course.

LANDING KSAT RUNWAY 13R: From DNKIN on track 112° to cross LDRON at 7000 and at 210K. Expect ILS or LOC Rwy 13R approach.

LANDING KSAT RUNWAY 22: From DNKIN on track 108° to cross GERVN at 6000 and at 210K, then on track 101° to ADDYY, then on track 037° to cross IXION at 6000, then on track 037°. Expect RADAR vectors to final approach course.

LANDING KSAT RUNWAY 31L: From DNKIN on track 127° to cross MANOO at or below 9000, then on track 130° to cross PATII at or above 7000, then on track 130° to cross KEENM at 6000 and at 210K, then on track 130°. Expect RADAR vectors to final approach course.

LANDING KSKF, KBAZ, KCVB, KSSF, KPEZ, 5C1, KRND: From AIRBL on track 109° to cross FOLLK between 9000 and 13000, then on track 109° to DNKIN, then on track 121° to cross RESST at 9000 and at 210K, then on track 121°. Expect RADAR vectors to final approach course.

LOST COMMUNICATIONS

RUNWAY 4: After LOWWN, proceed to HARDD at 5000 and hold.

RUNWAY 22: After IXION, proceed direct to ERROR and hold.

RUNWAY 31L: After KEENM proceed to TRNKS at 3400, then on ILS or LOC Rwy 31L or RNAV (GPS) Y Rwy 31L approach.

SC-3, 11 JUL 2024 to 08 AUG 2024

SC-3, 11 JUL 2024 to 08 AUG 2024