

POPPO ONE ARRIVAL (RNAV) Transition Routes

SAN ANTONIO, TEXAS

RNAV 1 - DME/DME/IRU or GPS.

RADAR required.

SAN ANTONIO APP CON
 125.1 307.0
 BAZ ATIS
 119.325
 KRND ATIS*
 290.525
 KSKF ATIS
 120.45 273.5
 SAT D-ATIS
 118.9
 SSF ATIS
 128.8

NOTE: Jet and turboprop aircraft only.

PRTZY

9000
 *3700
 154°
 (176)

MUGSY

9000
 *3700
 154°
 (271)

11 NM

PPNUT FL220

DILLO FL220

9000
 *3700
 172°
 (411)

10 NM

TRVLL

9000
 *3700
 113°
 (63)

POPPO
 10000

DILLO TRANSITION (DILLO.POPPO1)

PPNUT TRANSITION (PPNUT.POPPO1)

PRTZY TRANSITION (PRTZY.POPPO1)

TRVLL TRANSITION (TRVLL.POPPO1)

NOTE: Chart not to scale.

(CONTINUED ON FOLLOWING PAGE)

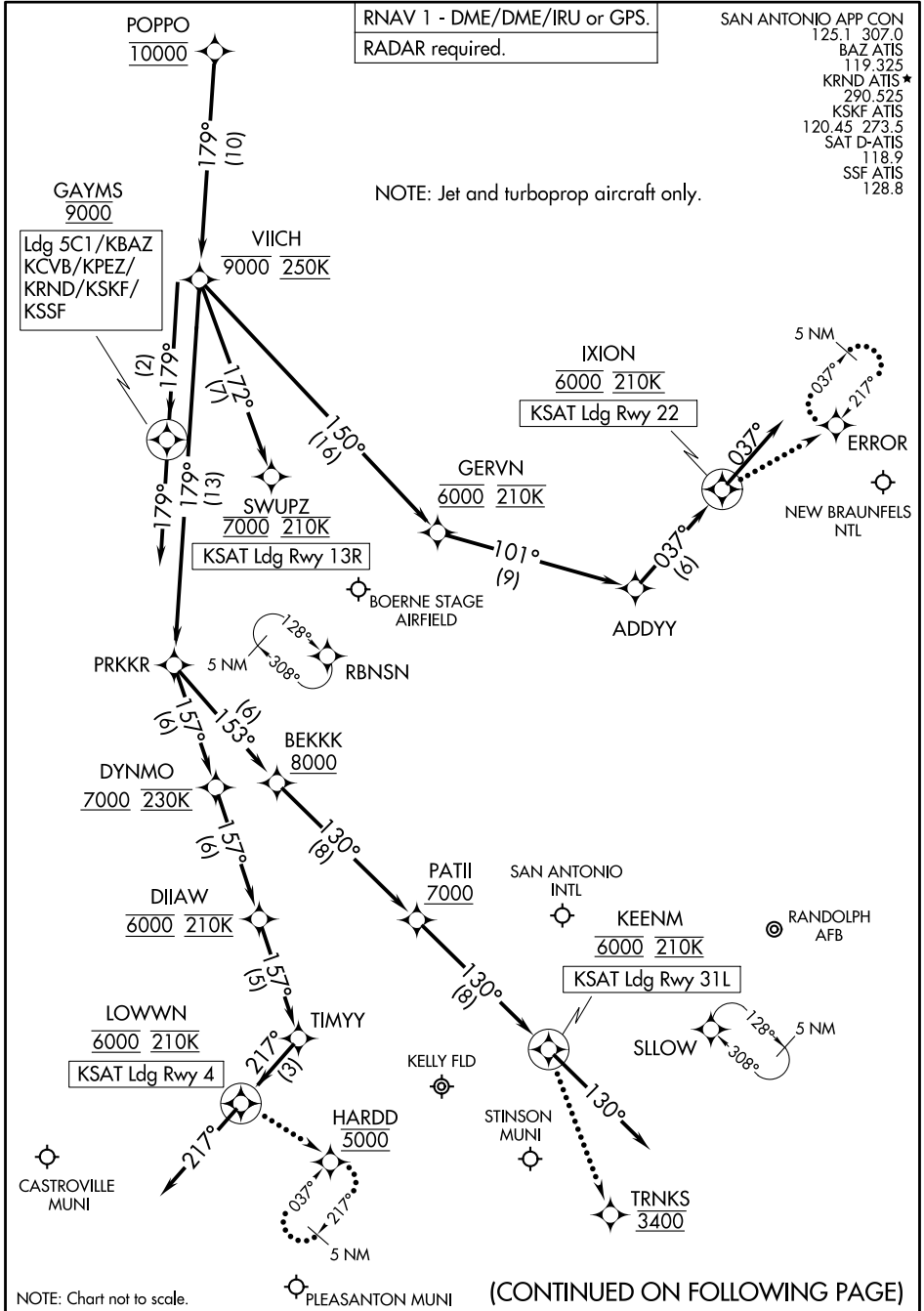
See following page for arrival routes

POPPO ONE ARRIVAL (RNAV) Transition Routes

SAN ANTONIO, TEXAS

POPPO ONE ARRIVAL (RNAV) Arrival Routes

SAN ANTONIO, TEXAS



SC-3, 11 JUL 2024 to 08 AUG 2024

SC-3, 11 JUL 2024 to 08 AUG 2024

ARRIVAL ROUTE DESCRIPTION

SAN ANTONIO INTL (KSAT): From POPPO on track 179° to cross VIICH at or below 9000 and at 250K.

LANDING KSAT RUNWAY 4: From VIICH on track 179° to PRKKR, then on track 157° to cross DYNMO at or above 7000 and at 230K, then on track 157° to cross DIIAW at 6000 and at 210K, then on track 157° to TIMYY, then on track 217° to cross LOWWN at 6000 and at 210K, then on track 217°. Expect RADAR vectors to final approach course.

LANDING KSAT RUNWAY 13R: From VIICH on track 172° to cross SWUPZ at 7000 and at 210K. Expect ILS or LOC RWY 13R approach.

LANDING KSAT RUNWAY 22: From VIICH on track 150° to cross GERVN at 6000 and at 210K, then on track 101° to ADDYY, then on track 037° to cross IXION at 6000 and at 210K, then on track 037°. Expect RADAR vectors to final approach course.

LANDING KSAT RUNWAY 31L: From VIICH on track 179° to PRKKR, then on track 153° to cross BEKKK at or above 8000, then on track 130° to cross PATII at or above 7000, then on track 130° to cross KEENM at 6000 and at 210K, then on track 130°. Expect RADAR vectors to final approach course.

LANDING KSKF/KBAZ/KCVB/KSSF/KPEZ/5C1/KRND: From POPPO on track 179° to cross VIICH at or below 9000 and at 250K, then on track 179° to cross GAYMS at 9000, then on track 179°. Expect RADAR vectors to final approach course.

LOST COMMUNICATIONS

KSAT RUNWAY 4: After LOWWN proceed to HARDD at 5000 and hold.

KSAT RUNWAY 22: After IXION proceed to ERROR and hold.

KSAT RUNWAY 31L: After KEENM proceed to TRNKS at 3400, then on ILS or LOC Rwy 31L or RNAV (GPS) Y Rwy 31L approach.

SC-3, 11 JUL 2024 to 08 AUG 2024

SC-3, 11 JUL 2024 to 08 AUG 2024