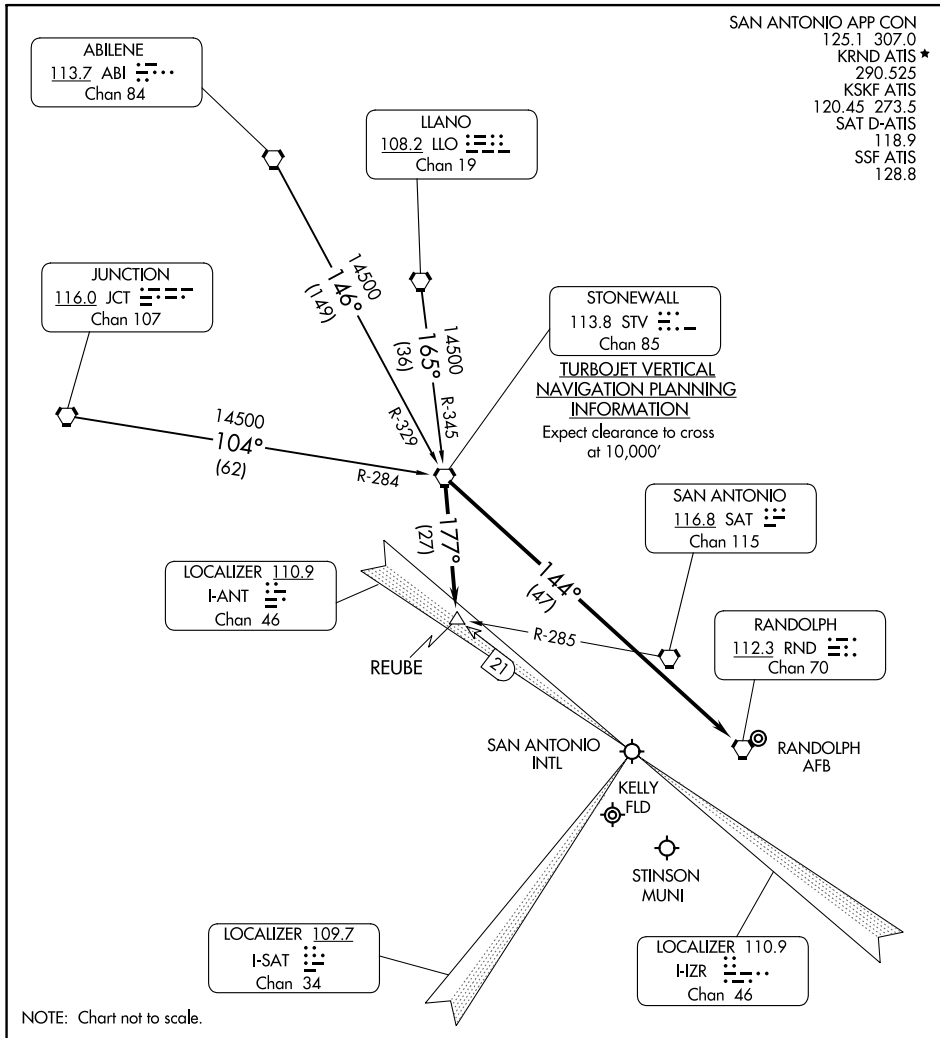


STONEWALL ONE ARRIVAL

SAN ANTONIO, TEXAS



SAN ANTONIO APP CON
125.1 307.0
KRND ATIS *
290.525
KSKF ATIS
120.45 273.5
SAT D-ATIS
118.9
SSF ATIS
128.8

SC-3, 11 JUL 2024 to 08 AUG 2024

SC-3, 11 JUL 2024 to 08 AUG 2024

ARRIVAL ROUTE DESCRIPTION

ABILENE TRANSITION (ABI.STV1): From over ABI VORTAC via ABI R-146 and STV R-329 to STV VORTAC. Thence

JUNCTION TRANSITION (JCT.STV1): From over JCT VORTAC via JCT R-104 and STV R-284 to STV VORTAC. Thence

LLANO TRANSITION (LLO.STV1): From over LLO VORTAC via LLO R-165 and STV R-345 to STV VORTAC. Thence

ALL AIRPORTS EXCEPT RANDOLPH AIR FORCE BASE: From over STV VORTAC via STV R-177 to REUBE INT. Expect radar vectors to final approach course.

RANDOLPH AIR FORCE BASE: From over STV VORTAC via direct RND VORTAC.

STONEWALL ONE ARRIVAL

SAN ANTONIO, TEXAS