

# ILS or LOC/DME Y RWY 34

LOC I-OSQ <b>110.7</b>	APCH CRS <b>338°</b>	Rwy Ldg <b>11,550</b> TDZE <b>660</b> Arprt Elev <b>690</b>
---------------------------	-------------------------	--

[USAF]

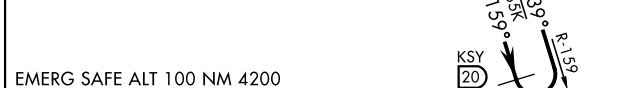
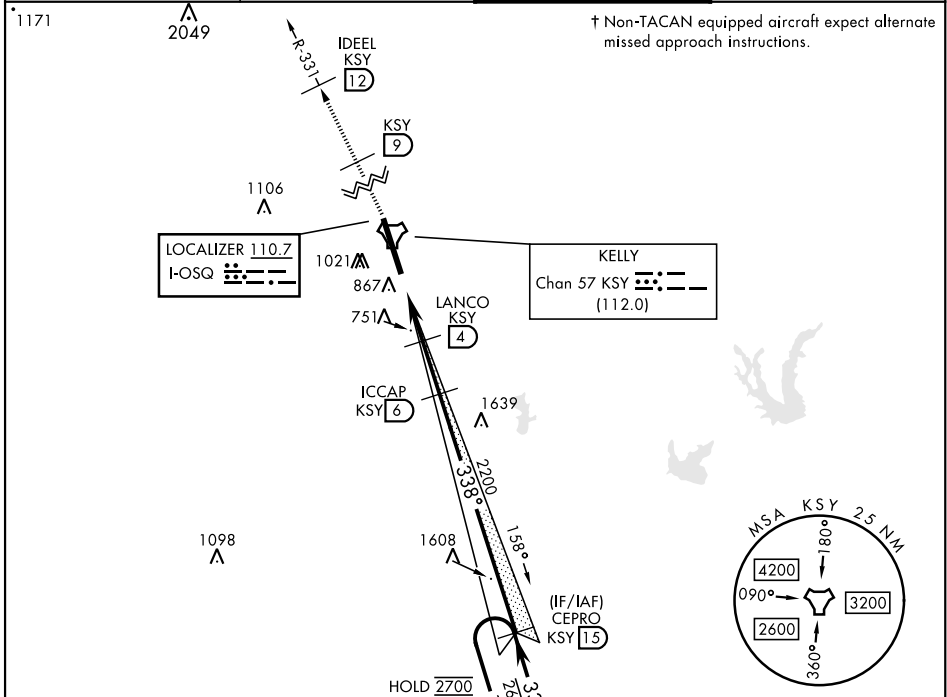
KELLY FLD (KSKF)

▼ \* When ALS inop, increase RVR to 40 and vis to ¾ mile.  
\*\* When ALS inop, increase RVR to 55 and vis to 1 mile.  
\*\*\* Circling not authorized E of Rwy 16-34.

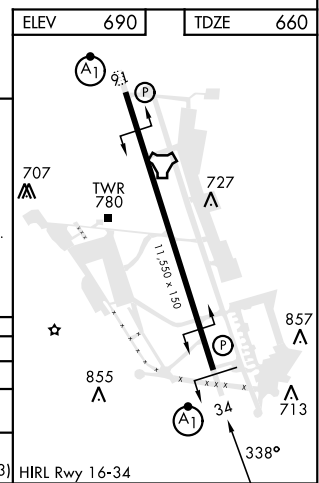


† MISSED APPROACH: Climb to 2500 via KSY TACAN R-331 until 9 DME, cross 9 DME at 2500, then continue climb to 3000 to IDEEL/12 DME. Expect ATC instructions.

ATIS <b>120.45 273.5</b>	SAN ANTONIO APP CON <b>118.05 353.5</b>	TOWER <b>124.3 322.35</b>	GND CON <b>121.8 289.4</b>
-----------------------------	--	------------------------------	-------------------------------



2500 KSY R-331	KSY R-331 9	3000 IDEEL KSY 12	ICCAP KSY 6	CEPRO KSY 15	KSY 20
KSY TACAN		JETKA KSY 1.9	LANCO KSY 4	2200	2700
0.5 NM		2.1 NM		2.1 NM	
338°		338°		159°	
339°		339°		339°	
VGSI and descent angles not coincident. (VGSI angle 3.02/TCH 93)		TCH 60°		GS 3.00°	



CATEGORY	A	B	C	D	E
S-ILS 34*	860/24		200	(200-½)	
S-LOC 34**	1020/24	360 (400-½)	1020/30	360	(400-¾)
CIRCLING***	1200-1	1280-1	1340-1¾	1400-2¼	1900-3
	510 (600-1)	590 (600-1)	650 (700-1¾)	710 (800-2¼)	1210(1300-3)

SAN ANTONIO, TEXAS      29°23'N-98°35'W      KELLY FLD (KSKF)

Amtd 2 13JUN24

# ILS or LOC/DME Y RWY 34

SC-3, 11 JUL 2024 to 08 AUG 2024

SC-3, 11 JUL 2024 to 08 AUG 2024