

SAN ANTONIO, TEXAS

RNAV (GPS) RWY 34

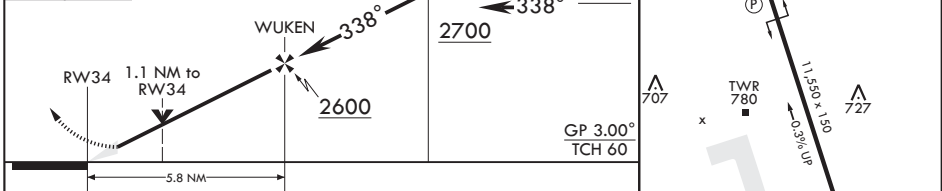
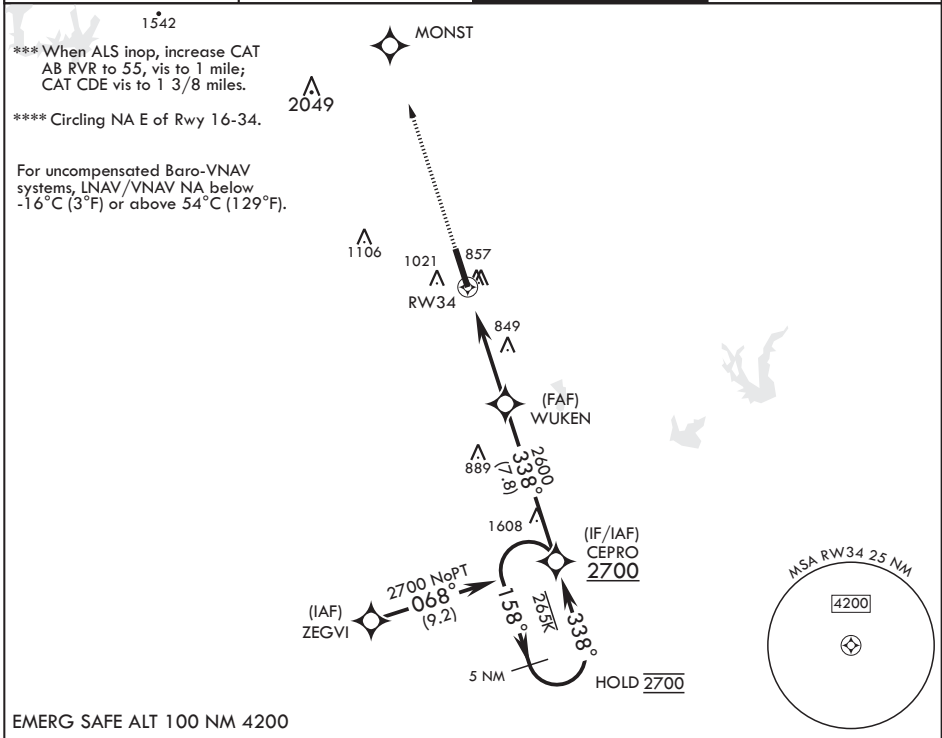
WAAS CH 65364 W34A	APCH CRS 338°	Rwy ldg TDZE Arprt Elev	11,550 660 690
---------------------------------	-------------------------	-------------------------------	---

AL-371 (USAF)

KELLY FLD (KSKF)

RNP APCH ▼ * When ALS inop, increase RVR to 40, vis to 3/4 miles. ** When ALS inop, increase vis to 1 3/8 miles.	ALSF-1 	MISSED APPROACH: Climb to 3000 direct MONST. Expect ATC instructions.
--	------------	---

ATIS 120.45 273.5	SAN ANTONIO APP CON 118.05 353.5	KELLY TOWER 124.3 322.35	GND CON 121.8 289.4
-----------------------------	--	------------------------------------	-------------------------------



CATEGORY	A	B	C	D	E
LPV DA*	860/24		200	(200-½)	
LNAV/VNAV DA**	1120/45		460	(500-¾)	
LNAV MDA***	1120/24	460 (500-½)	1120/45	460	(500-¾)
☐ CIRCLING****	1200-1 510 (600-1)	1280-1 590 (600-1)	1340-1¼ 650 (700-1¼)	1400-2¼ 710 (800-2¼)	1900-3 1210 (1300-3)

SAN ANTONIO, TEXAS
Amdt 2 23FEB23

29°23'N - 98°35'W

KELLY FLD (KSKF)

RNAV (GPS) RWY 34

SC-3, 11 JUL 2024 to 08 AUG 2024

SC-3, 11 JUL 2024 to 08 AUG 2024