

(TJANO1.TJANO) 24025

AL-371 (FAA)

KELLY FLD (SKF)  
SAN ANTONIO, TEXAS

# TJANO ONE DEPARTURE (RNAV)

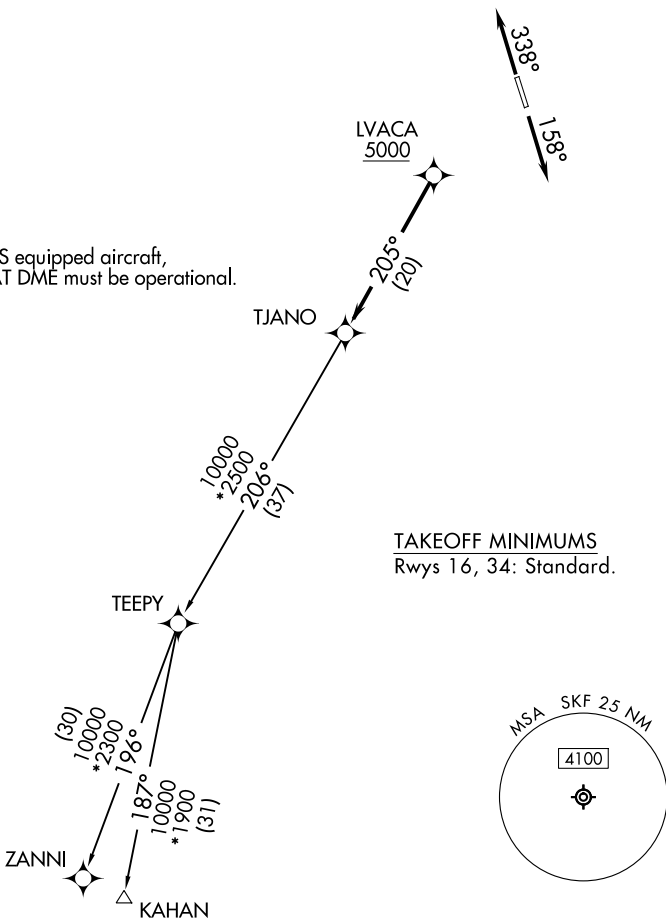
SAN ANTONIO DEP CON  
125.7 290.225  
ATIS  
120.45 273.5  
GND CON  
121.8 289.4  
KELLY TOWER  
124.3 322.35

RNAV 1 - DME/DME IRU or GPS.

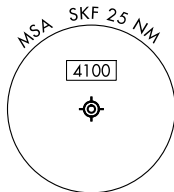
RADAR required.

**TOP ALTITUDE:  
ASSIGNED BY ATC**

NOTE: For non-GPS equipped aircraft,  
THX and SAT DME must be operational.



TAKEOFF MINIMUMS  
Rwys 16, 34: Standard.



Note: Chart not to scale.



## DEPARTURE ROUTE DESCRIPTION

TAKEOFF RUNWAY 16: Climb on heading 158° or as assigned by ATC,  
for vectors to LVACA, thence . . .

TAKEOFF RUNWAY 34: Climb on heading 338° or as assigned by ATC,  
for vectors to LVACA, thence . . .

. . . on track 205° to TJANO, then on Transition. Maintain ATC assigned altitude.

KAHAN TRANSITION (TJANO1.KAHAN)

ZANNI TRANSITION (TJANO1.ZANNI)

**TJANO ONE DEPARTURE (RNAV)**  
(TJANO1.TJANO) 25JAN24

SAN ANTONIO, TEXAS  
KELLY FLD (SKF)

SC-3, 11 JUL 2024 to 08 AUG 2024

SC-3, 11 JUL 2024 to 08 AUG 2024