

BOWIE SEVEN DEPARTURE

ATIS
128.8
CLNC DEL (When twr closed)
121.7
GND CON
121.7 379.9
SAN ANTONIO DEP CON
125.7 290.225
STINSON TOWER*
118.2 379.9

SAN ANTONIO
116.8 SAT
Chan 115

COTULLA
115.8 COT
Chan 105

THREE RIVERS
111.4 THX
Chan 51

CORPUS CHRISTI
115.5 CRP
Chan 102

LAREDO
117.4 LRD
Chan 121

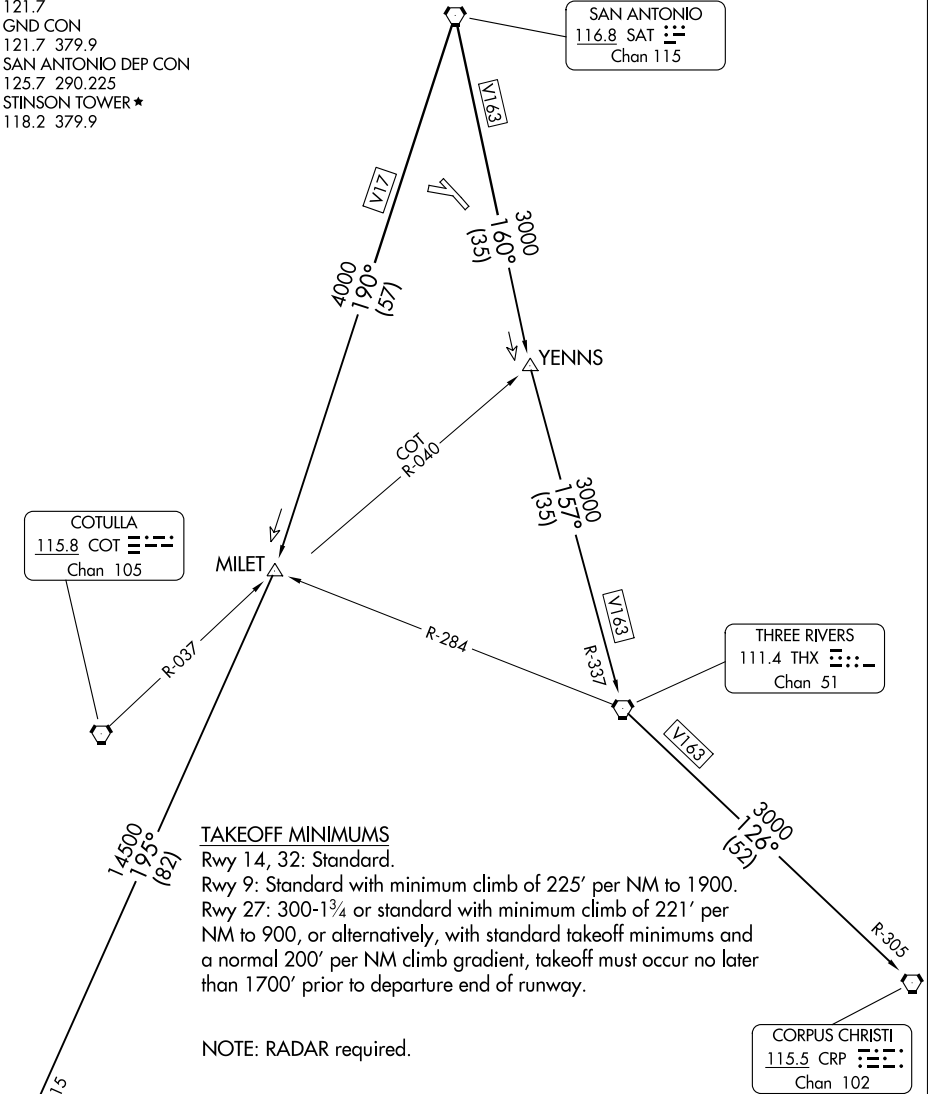
TAKEOFF MINIMUMS

Rwy 14, 32: Standard.

Rwy 9: Standard with minimum climb of 225' per NM to 1900.

Rwy 27: 300-1³/₄ or standard with minimum climb of 221' per NM to 900, or alternatively, with standard takeoff minimums and a normal 200' per NM climb gradient, takeoff must occur no later than 1700' prior to departure end of runway.

NOTE: RADAR required.



SC-3, 11 JUL 2024 to 08 AUG 2024

SC-3, 11 JUL 2024 to 08 AUG 2024

NOTE: Chart not to scale

(CONTINUED ON FOLLOWING PAGE)

BOWIE SEVEN DEPARTURE

BOWIE SEVEN DEPARTURE



DEPARTURE ROUTE DESCRIPTION

TAKEOFF RWYS 9, 14, 27, 32: Climb on assigned heading and altitude for RADAR vectors to SAT VORTAC, thence. . . .

. . . .on transition/route. Expect filed altitude 10 minutes after departure.

CORPUS CHRISTI TRANSITION (BOWIE7.CRP): From over SAT VORTAC on SAT R-160 to YENNS/SAT 35 DME, then on THX R-337 to THX VORTAC, then on THX R-126 and CRP R-305 to CRP VORTAC.

LAREDO TRANSITION (BOWIE7.LRD): From over SAT VORTAC on SAT R-190 to MILET/SAT 57 DME, then on LRD R-015 to LRD VORTAC.

SC-3, 11 JUL 2024 to 08 AUG 2024

SC-3, 11 JUL 2024 to 08 AUG 2024