

(YODUH1.YODUH) 24025

AL-372 (FAA)

STINSON MUNI (SSF)
SAN ANTONIO, TEXAS

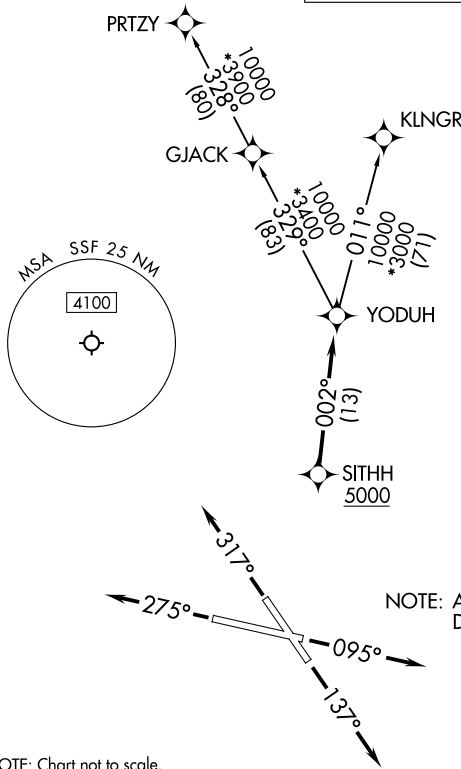
YODUH ONE DEPARTURE (RNAV)

RNAV 1 - DME/DME IRU or GPS.

**TOP ALTITUDE:
ASSIGNED BY ATC**

RADAR required.

SAN ANTONIO DEP CON
125.7 290.225
ATIS
128.8
CLNC DEL (When twr closed)
121.7
GND CON
121.7 379.9
STINSON TOWER *
118.2 379.9



TAKEOFF MINIMUMS

Rwy 9: Standard with minimum climb of 230'/NM to 1900.
 Rwy 14: Standard with minimum climb of 220'/NM to 1900.
 Rwy 27: 300-1 $\frac{5}{8}$ or Standard with minimum climb of 230'/NM to 900, or alternatively, with standard takeoff minimums and a normal 200'/NM climb gradient, takeoff must occur no later than 1800' prior to DER.
 Rwy 32: Standard with minimum climb of 230'/NM to 1700.

NOTE: Aircraft destined for airports north/northeast of DFW terminal area must file the KLNGR Transition.

NOTE: Chart not to scale.



DEPARTURE ROUTE DESCRIPTION

TAKEOFF RUNWAY 9: Climb on heading 095° or as assigned by ATC, for vectors to SITHH, thence . . .

TAKEOFF RUNWAY 14: Climb on heading 137° or as assigned by ATC, for vectors to SITHH, thence . . .

TAKEOFF RUNWAY 27: Climb on heading 275° or as assigned by ATC, for vectors to SITHH, thence . . .

TAKEOFF RUNWAY 32: Climb on heading 317° or as assigned by ATC, for vectors to SITHH, thence . . .

. . . on track 002° to YODUH, then on Transition. Maintain ATC assigned altitude.

KLNGR TRANSITION (YODUH1.KLNGR)

PRTZY TRANSITION (YODUH1.PRTZY)

YODUH ONE DEPARTURE (RNAV)

(YODUH1.YODUH) 25JAN24

SAN ANTONIO, TEXAS
STINSON MUNI (SSF)

SC-3, 11 JUL 2024 to 08 AUG 2024

SC-3, 11 JUL 2024 to 08 AUG 2024