

RNAV (GPS) RWY 10

APCH CRS	Rwy Idg	11,375
096°	TDZE	26
	Arpt Elev	41

[USA]

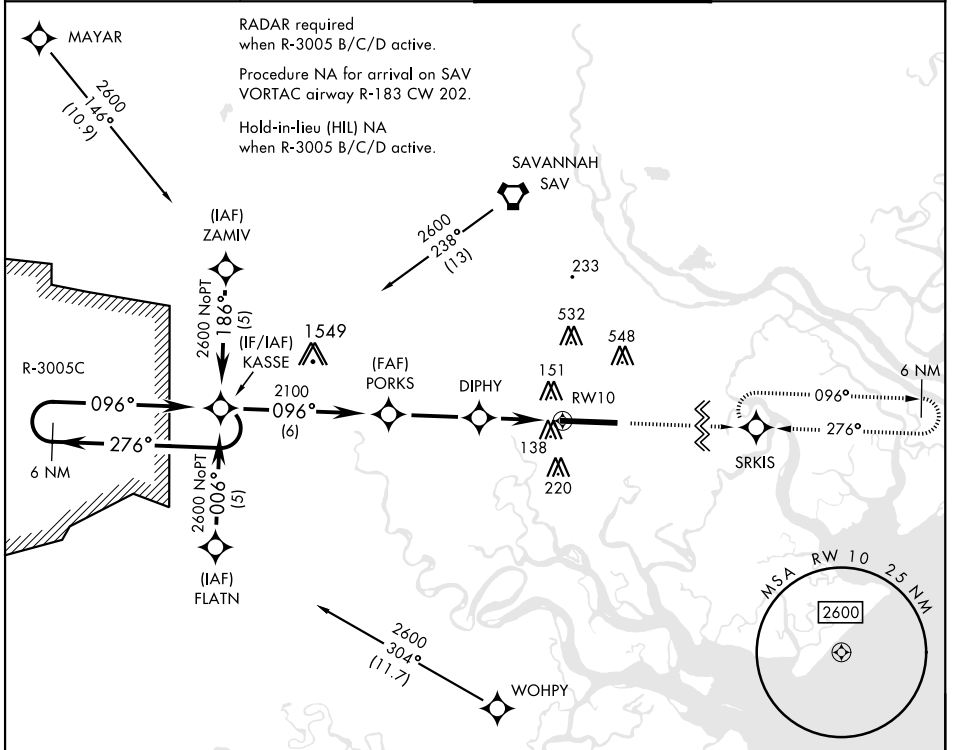
HUNTER AAF (KSVN)

RNP APCH-GPS

▼ *When ALS inop, increase CAT AB vis to 1 mile;
CAT CD vis to 1/4 miles.
**Circling not authorized N of Rwy 10-28 for CAT D.

B MISSED APPROACH: Climb to 2500 direct SRKIS and hold.

ATIS ★	SAVANNAH APP CON	TOWER★	GND CON
127.525 323.125	120.4 353.775	124.975 (CTAF) 0 279.575	121.8 291.675



SE-4, 11 JUL 2024 to 08 AUG 2024

SE-4, 11 JUL 2024 to 08 AUG 2024

CATEGORY	A	B	C	D
	LNVA MDA*	460-1	434	(500-1)
CIRCLING**	600-1	559 (600-1)	920-2½ 879 (900-2½)	920-2¾ 879 (900-2¾)

ELEV	41	TDZE	26
------	----	------	----

6 NM Holding Pattern	KASSE	DIPHY	RW10
2600	2100	1040	
276°	096°	3.05° TCH 55	1.1 NM to RW10
3.3 NM	3 NM		

146	184	182
TWR 97		
11,375 x 197		

RNAV (GPS) RWY 10