

# VOR RWY 28

SVN VOR/DME <b>111.6</b> Chan <b>53</b>	APCH CRS <b>282°</b>	Rwy Idg <b>11,375</b> TDZE <b>41</b> Arprt Elev <b>41</b>
---	-------------------------	---

[USA]

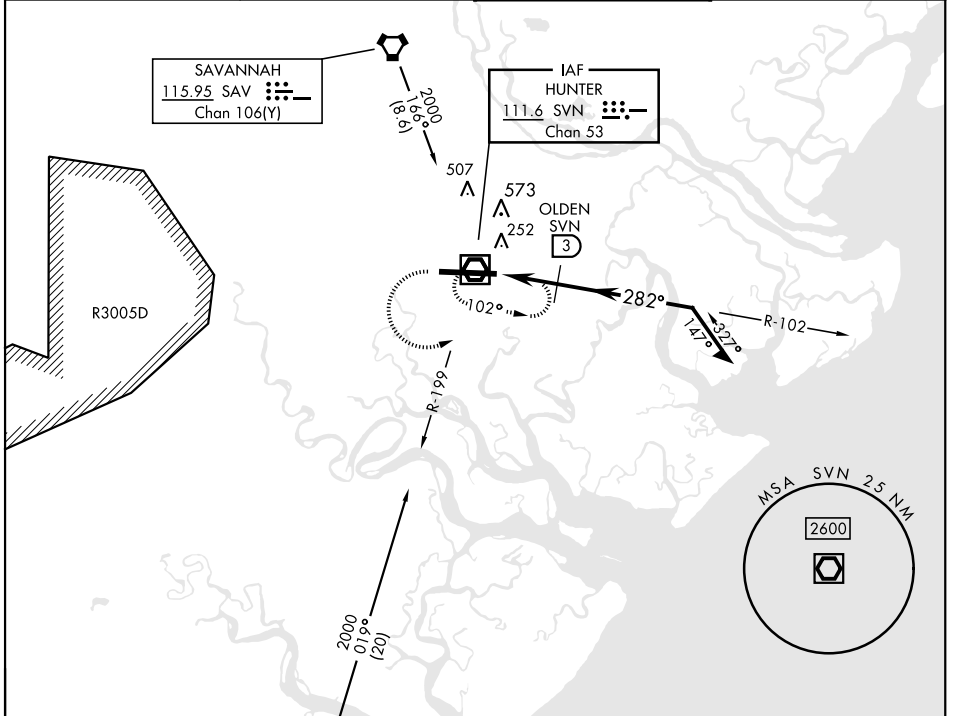
HUNTER AAF (KSVN)

▼ \* When ALS inop, increase CAT AB RVR to 55, vis to 1 mile; CAT CD vis to 1½ miles.  
\*\*Circling not authorized N of Rwy 10-28 for CAT D.



MISSED APPROACH: Climb to 2000 then climbing left turn to 2000 direct SVN VOR/DME and hold.

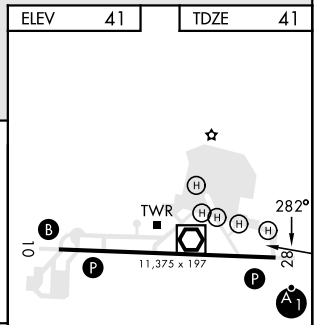
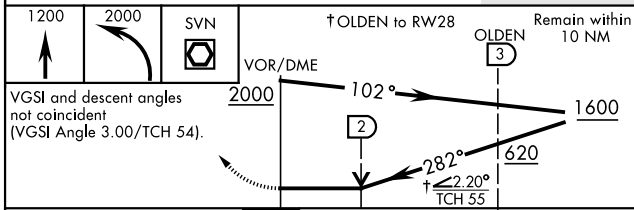
ATIS ★ <b>127.525 323.125</b>	SAVANNAH APP CON <b>120.4 353.775</b>	TOWER ★ <b>124.975</b> (CTAF) <b>0 279.575</b>	GND CON <b>121.8 291.675</b>
----------------------------------	--	---	---------------------------------



SE-4, 11 JUL 2024 to 08 AUG 2024

SE-4, 11 JUL 2024 to 08 AUG 2024

ELEV 41	TDZE 41
---------	---------



CATEGORY	A	B	C	D
S-28 *	580/24 539 (600-½)	580/55 539 (600-1)		
CIRCLING **	600-1 559 (600-1)	920-2½ 879 (900-2½)	920-2¾ 879 (900-2¾)	

REIL Rwy 10   
HIRL Rwy 10-28

# VOR RWY 28