

APP CRS	Rwy ldg	5234
185°	TDZE	62
	Apt Elev	62

RNAV (RNP) RWY 19

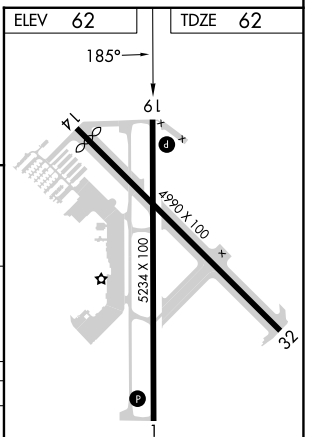
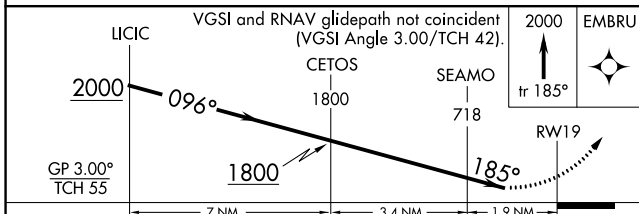
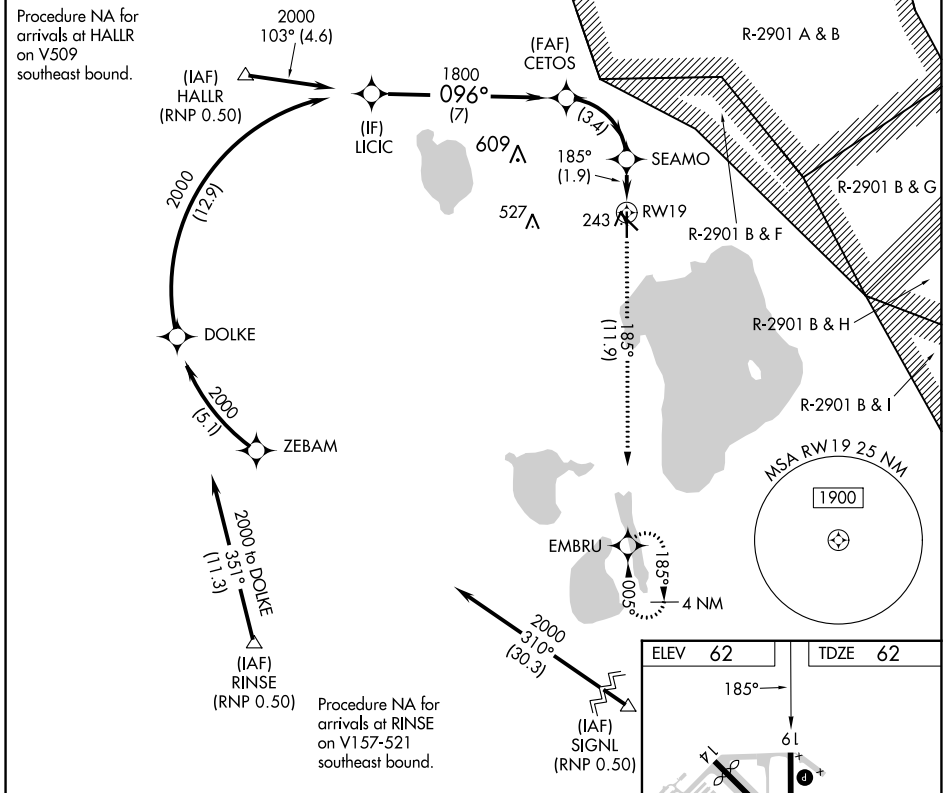
SEBRING RGNL (SEF)

RNP AR APCH GPS.

▼
▲NA For uncompensated Baro-VNAV systems, procedure NA below -15°C or above 54°C.

MISSED APPROACH: Climb to 2000 on track 185° to EMBRU and hold.

AWOS-3 119.475	MIAMI CENTER 134.55 257.7	UNICOM 122.7 (CTAF) 0
--------------------------	-------------------------------------	---------------------------------



CATEGORY	A	B	C	D
RNP 0.30 DA		440-1¼	378 (400-1¼)	

AUTHORIZATION REQUIRED

MIRL Rwy 1-19 0
REIL Rwy 1 and 19 0

SE-3, 11 JUL 2024 to 08 AUG 2024

SE-3, 11 JUL 2024 to 08 AUG 2024