

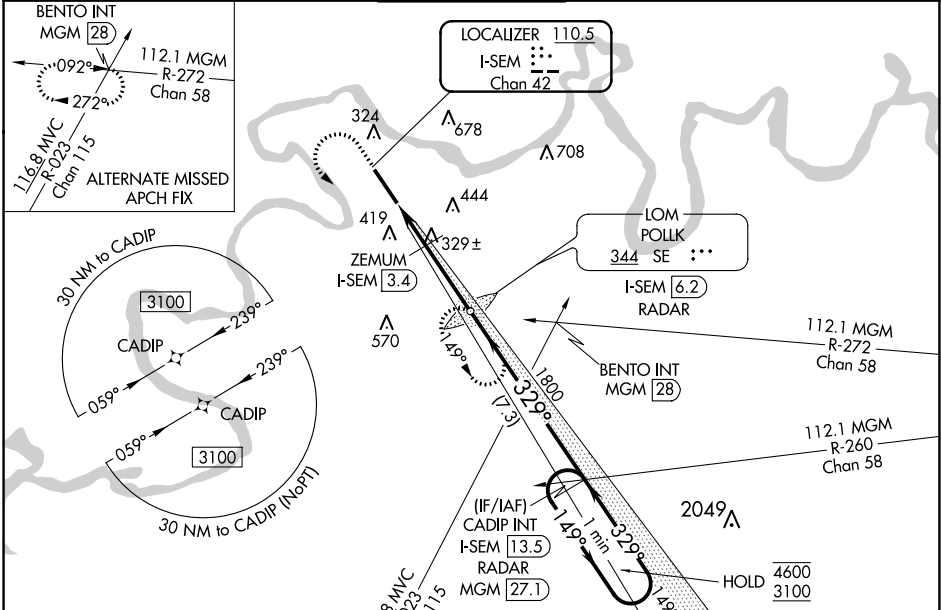
LOC/DME I-SEM 110.5 Chan 42	APP CRS 329°	Rwy Idg 8014 TDZE 165 Apt Elev 166
---	------------------------	---

ILS Y or LOC Y RWY 33

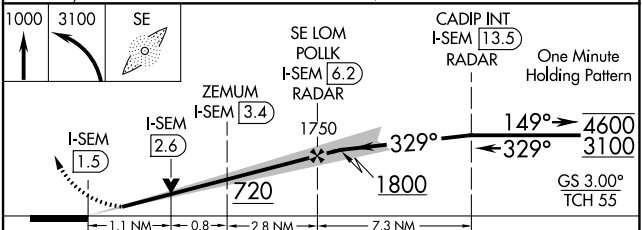
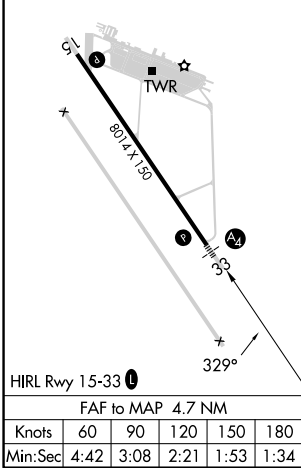
CRAIG FLD (SEM)

ADF required. RNP APCH - GPS.	MALS	MISSED APPROACH: Climb to 1000 then climbing left turn to 3100 direct POLK LOM/6.2 DME/RADAR and hold, continue climb-in-hold to 3100.
<p>⚠ Inop table does not apply to S-ILS 33. For inoperative ALS, increase S-LOC 33 Cat E visibility to 1½ SM and ZEMUM fix minimums S-LOC 33 Cats C-E visibility to 1½ SM.</p> <p>⚠ NA</p>		

AWOS-3PT 119.15	MONTGOMERY APP CON * 124.0 363.025	CRAIG TOWER* 120.85	GND CON 121.675	UNICOM 122.7 (CTAF) 0
---------------------------	--	-------------------------------	---------------------------	---------------------------------



ELEV 166	TDZE 165
----------	----------



CATEGORY	A	B	C	D	E
S-ILS 33	365-¾			200 (200-¾)	415-¾ 250 (300-¾)
S-LOC 33	720-¾	555 (600-¾)	720-1⅓		555 (600-1⅓)
CIRCLING	720-1	760-1	760-1½	1040-2¾	1040-3
	554 (600-1)	594 (600-1)	594 (600-1½)	874 (900-2¾)	874 (900-3)
ZEMUM FIX MINIMUMS					
S-LOC 33	580-¾	415 (500-¾)	580-1		415 (500-1)
CIRCLING	660-1	760-1	760-1½	1040-2¾	1040-3
	494 (500-1)	594 (600-1)	594 (600-1½)	874 (900-2¾)	874 (900-3)

SE-4, 11 JUL 2024 to 08 AUG 2024

SE-4, 11 JUL 2024 to 08 AUG 2024