

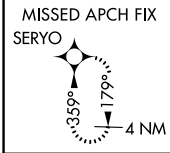
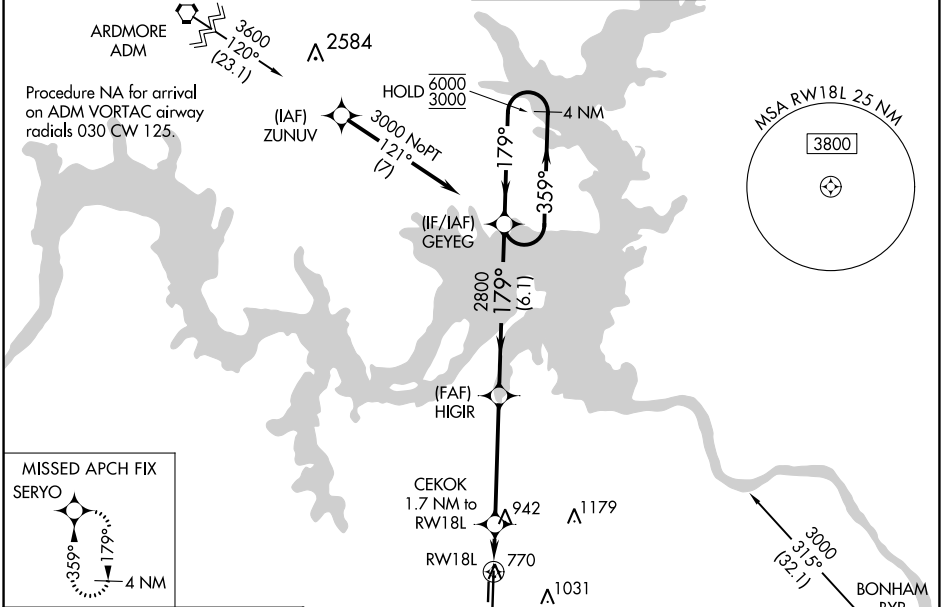
WAAS CH 86528 W18A	APP CRS 179°	Rwy Idg 9000 TDZE 741 Apt Elev 749
--	------------------------	---

RNAV (GPS) RWY 18L

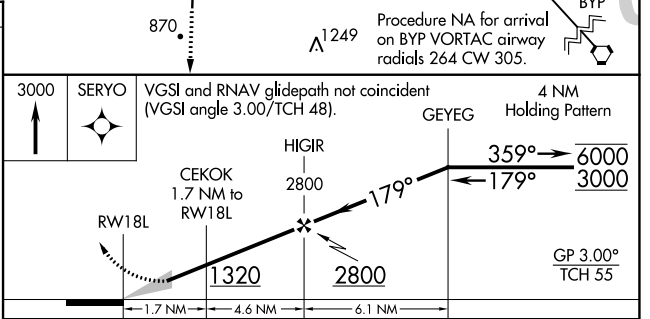
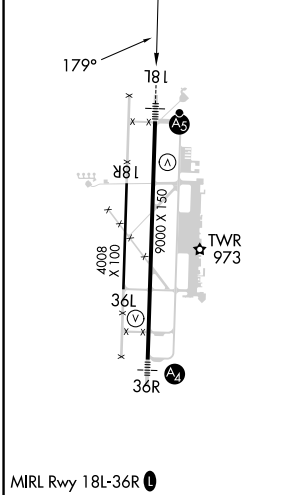
NORTH TEXAS RGNL/PERRIN FLD (GYI)

RNP APCH - GPS.	MALSR	MISSED APPROACH: Climb to 3000 direct SERYO and hold.
Circling Rwy 18R, 36L NA at night. For uncompensated Baro-VNAV systems, LNAV/VNAV NA below -10°C or above 54°C. For inop ALS, increase LNAV/VNAV all Cats visibility to 7/5 SM.		

ATIS 118.775	FORT WORTH CENTER 124.75 323.0	NORTH TEXAS TOWER ★ 120.575 (CTAF) 233.7	GND CON 124.125
------------------------	--	--	---------------------------



ELEV 749	TDZE 741
----------	----------



CATEGORY	A	B	C	D
LPV DA		941-½	200 (200-½)	
LNAV/VNAV DA		1015-½	274 (300-½)	
LNAV MDA	1200-½	459 (500-½)	1200-7/8	459 (500-7/8)
CIRCLING	1300-1	551 (600-1)	1400-1¾ 651 (700-1¾)	1540-2½ 791 (800-2½)

SC-2, 11 JUL 2024 to 08 AUG 2024

SC-2, 11 JUL 2024 to 08 AUG 2024