

WAAS CH <b>90235</b>	APP CRS <b>150°</b>	Rwy Idg TDZE Apt Elev	<b>8000</b> <b>1429</b> <b>1430</b>
-------------------------	------------------------	-----------------------------	---

# RNAV (GPS) RWY 15

JOE FOSS FLD (FSD)

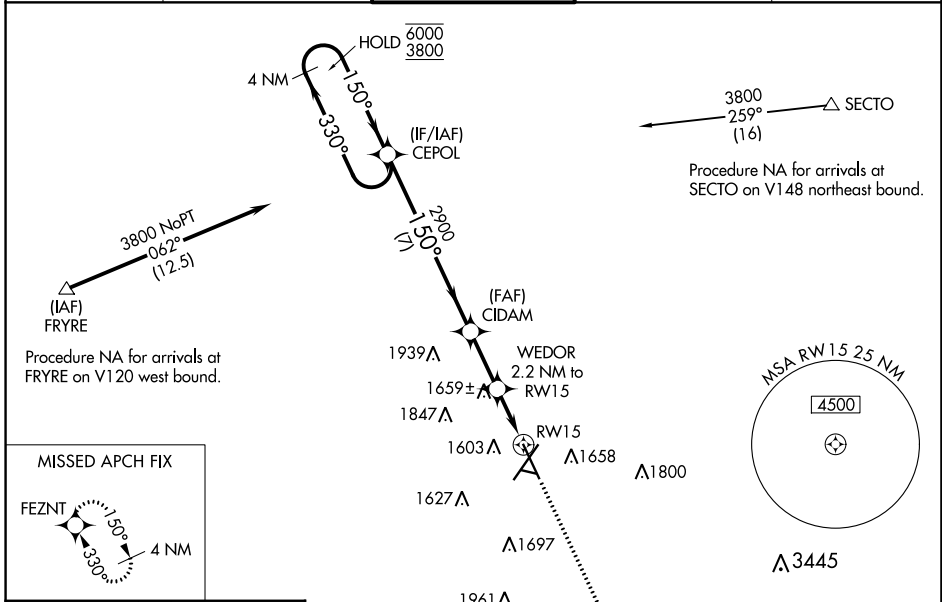
RNP APCH-GPS.

**ASR** Rwy 15 helicopter visibility reduction below 3/4 SM NA. For uncompensated Baro-VNAV systems, LNAV/VNAV NA below -21°C or above 54°C.

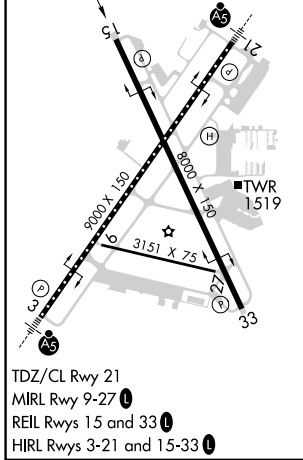
**-31°C**

MISSED APPROACH: Climb to 3800 direct FEZNT and hold.

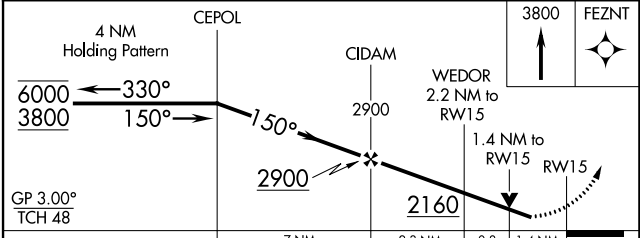
ATIS <b>126.6</b>	SIoux FALLS APP CON* <b>125.8 306.2</b>	SIoux FALLS TOWER* <b>118.3 (CTAF) 257.8</b>	GND CON <b>121.9 348.6</b>	UNICOM <b>122.95</b>
----------------------	--	---	-------------------------------	-------------------------



ELEV 1430	<b>D</b>	TDZE 1429
-----------	----------	-----------



SIoux FALLS, SOUTH DAKOTA  
Amdt 1B 02DEC21



CATEGORY	A	B	C	D
LPV DA		1839-1 1/8	410 (500-1 1/8)	
LNAV/VNAV DA		1909-1 3/8	480 (500-1 3/8)	
LNAV MDA	1920-1	491 (500-1)	1920-1 3/8	491 (500-1 3/8)
<b>C</b> CIRCLING	1960-1 530 (600-1)	1980-1 550 (600-1)	2060-1 3/4 630 (700-1 3/4)	2200-2 1/2 770 (800-2 1/2)

# RNAV (GPS) RWY 15

NC-1, 11 JUL 2024 to 08 AUG 2024

NC-1, 11 JUL 2024 to 08 AUG 2024