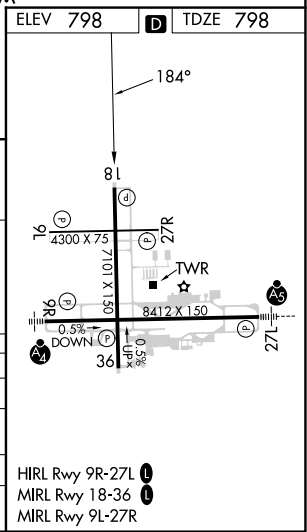
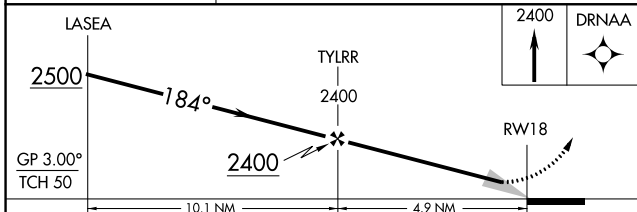
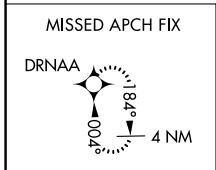
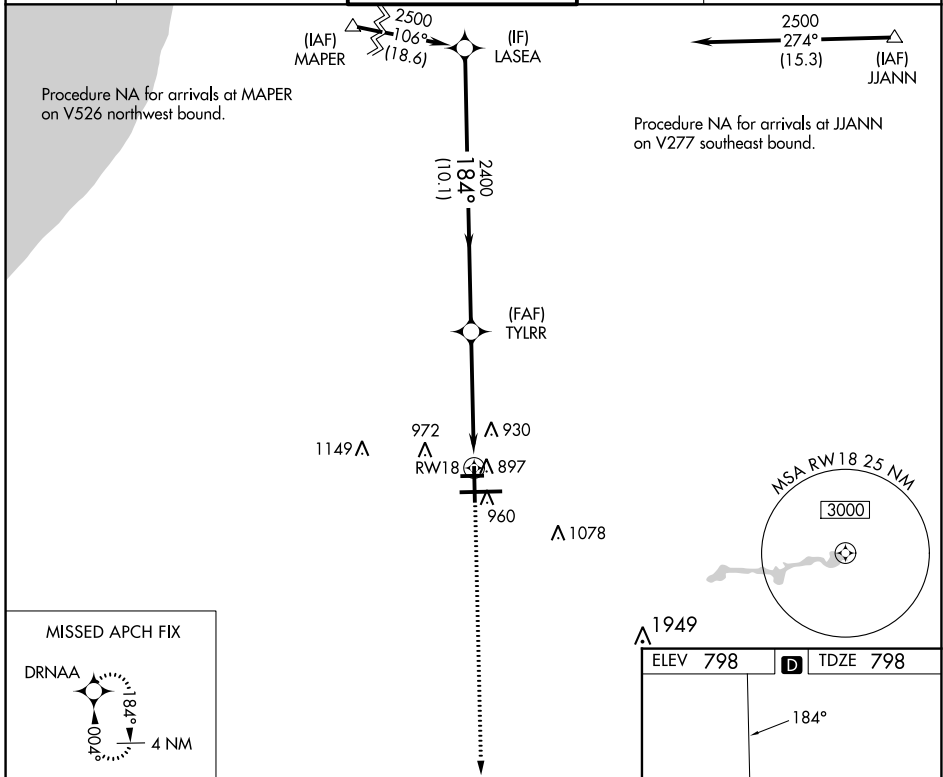


WAAS CH 73021 W18A	APP CRS 184°	Rwy Idg TDZE Apt Elev	7101 798 798
--	------------------------	-----------------------------	---

RNAV (GPS) RWY 18

SOUTH BEND INTL (SBN)

RNP APCH - GPS.		MISSED APPROACH: Climb to 2400 direct DRNAA and hold.		
Circling to Rwy 27R NA at night. For uncompensated Baro-VNAV systems, LNAV/VNAV NA below -19°C or above 54°C.				
ATIS 120.675	SOUTH BEND APP CON * 118.55 257.8	SOUTH BEND TOWER * 135.675 (CTAF) 0 257.8	GND CON 121.7	CLNC DEL 121.9



CATEGORY	A	B	C	D
LPV DA		1048-3/4	250 (300-3/4)	
LNAV/VNAV DA		1057-3/4	259 (300-3/4)	
LNAV MDA		1160-1	362 (400-1)	
CIRCLING	1280-1	482 (500-1)	1440-1 3/4 642 (700-1 3/4)	1500-2 1/4 702 (800-2 1/4)

EC-2, 11 JUL 2024 to 08 AUG 2024

EC-2, 11 JUL 2024 to 08 AUG 2024