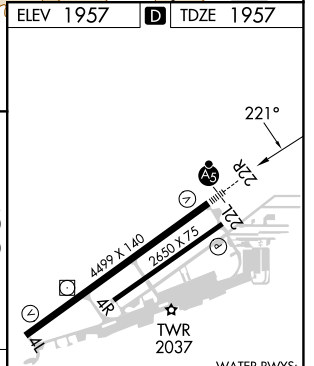
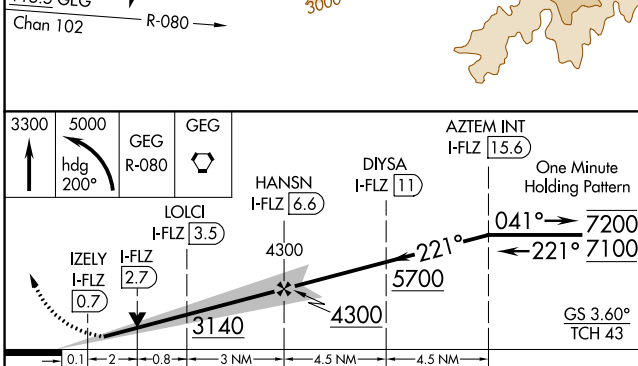
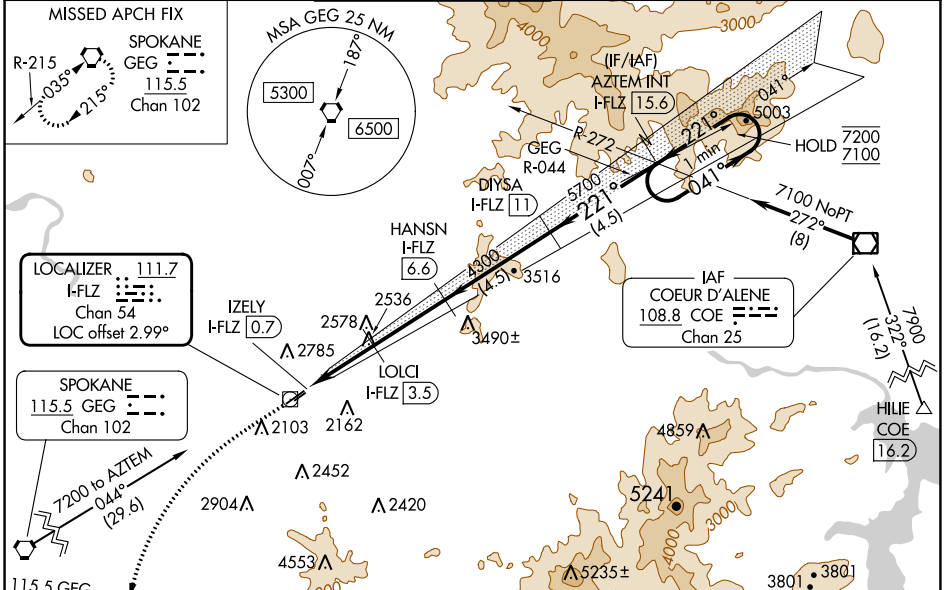


LOC/DME I-FLZ	APP CRS	Rwy Idg	4499
111.7	221°	TDZE	1957
Chan 54		Apt Elev	1957

ILS or LOC RWY 22R

FELTS FLD (S/F)

DME required.		MALSR		MISSED APPROACH: Climb to 3300 then climbing left turn to 5000 on heading 200° and GEG VORTAC R-080 to GEG VORTAC and hold.	
<p>▼ Circling NA northwest of Rwy 4L-22R. Circling Rwy 22L NA at night.</p> <p>⚠ Rwy 22R helicopter visibility reduction below 3/4 SM NA. For inop ALS, increase S-ILS Cat A/B/C visibility to 7/8 SM, increase S-LOC Cat A visibility to 1 SM and Cat C visibility to 2 1/2 SM.</p> <p>⚡ -16°C</p>					
ATIS	SPOKANE APP CON	FELTS TOWER ★	GND CON	CLNC DEL	UNICOM
120.55	133.35 263.0	132.5 (CTAF) 239.025	121.7	121.7	122.95



CATEGORY	A	B	C	D
S-ILS 22R	2257-1/2 300 (300-1/2)			NA
S-LOC 22R	2800-3/4	843 (900-3/4)	2800-1/8 843 (900-1/8)	NA
CIRCLING	2800-1/4 843 (900-1/4)	2800-1/2 843 (900-1/2)	3100-3 1143 (1200-3)	NA

REIL Rwy 4L	MIRL Rwy 4L-22R
-------------	-----------------

NW-1, 11 JUL 2024 to 08 AUG 2024

NW-1, 11 JUL 2024 to 08 AUG 2024