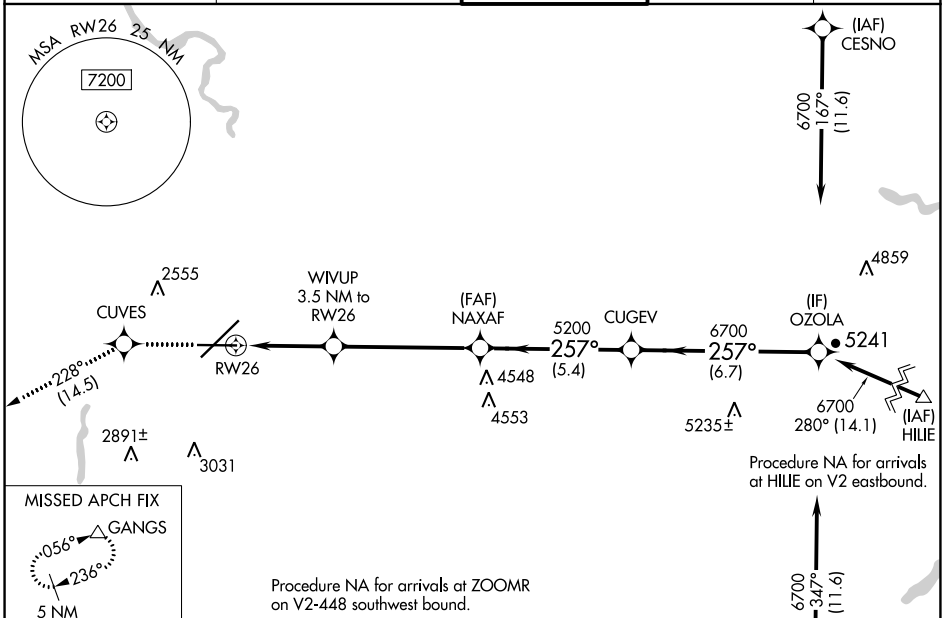


WAAS CH 93501 W26A	APP CRS 257°	Rwy Idg TDZE Apt Elev	8199 2372 2385
---------------------------------	------------------------	-----------------------------	---

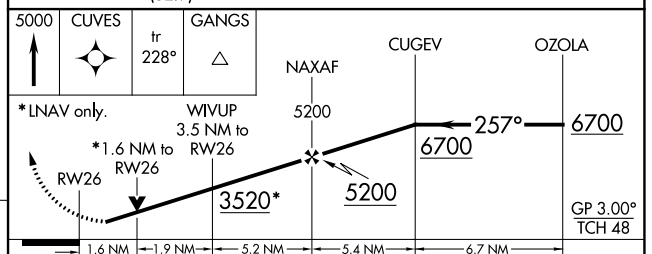
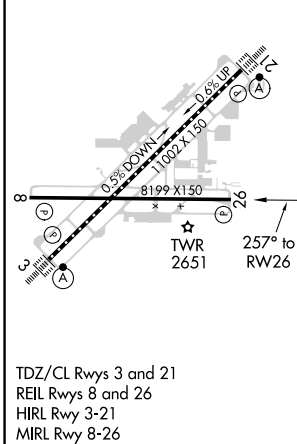
RNAV (GPS) Y RWY 26

SPOKANE INTL (GEG)

RNP APCH.		SPOKANE APP CON		SPOKANE TOWER		GND CON		CLNC DEL	
<p>▼ Rwy 26 helicopter visibility reduction below ¼ SM NA. ▲ For uncompensated Baro-VNAV systems, LNAV/VNAV NA below -18°C or above 54°C.</p>		<p>123.75 282.25 (205°-025°) 133.35 263.0 (026°-204°)</p>		<p>118.3 278.3</p>		<p>121.9 348.6</p>		<p>127.55</p>	



ELEV 2385	D	TDZE 2372
-----------	----------	-----------



CATEGORY	A	B	C	D
LPV DA	2688-1		316 (400-1)	
LNAV/VNAV DA	2911-1½		539 (600-1½)	
LNAV MDA	2920-1 548 (600-1)		2920-1½ 548 (600-1½)	
C CIRCLING	2960-1 575 (600-1)	2980-1 595 (600-1)	3300-2¾ 915 (1000-2¾)	3400-3 1015 (1100-3)

NW-1, 11 JUL 2024 to 08 AUG 2024

NW-1, 11 JUL 2024 to 08 AUG 2024