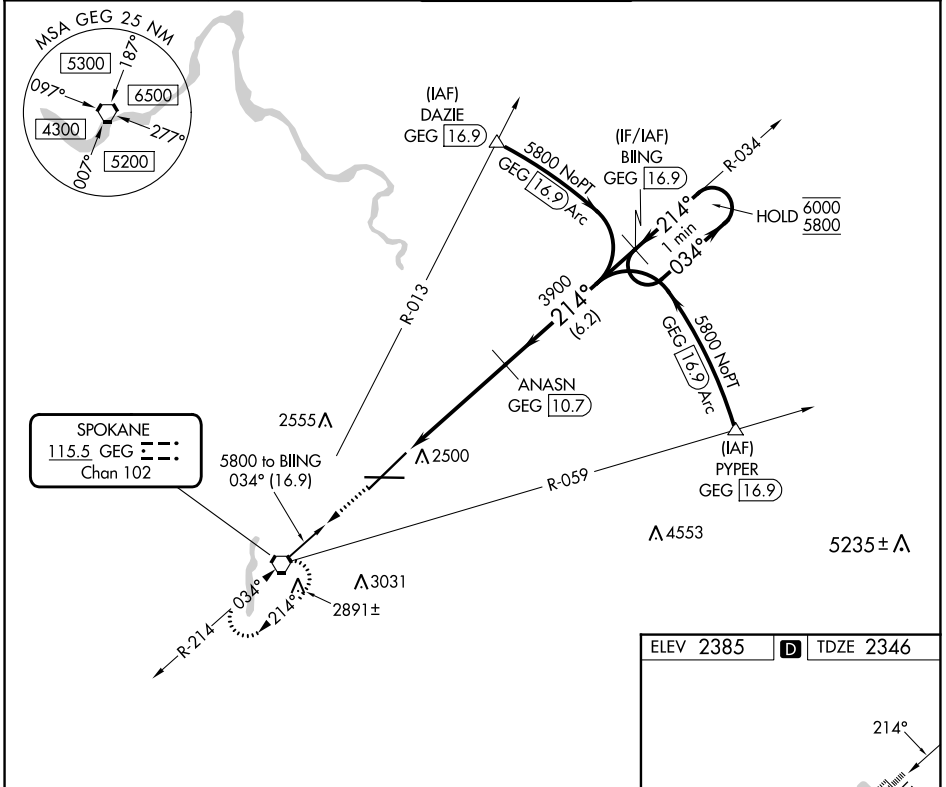


VORTAC GEG <b>115.5</b> Chan <b>102</b>	APP CRS <b>214°</b>	Rwy Idg <b>11002</b> TDZE <b>2346</b> Aprt Elev <b>2385</b>
---	------------------------	---

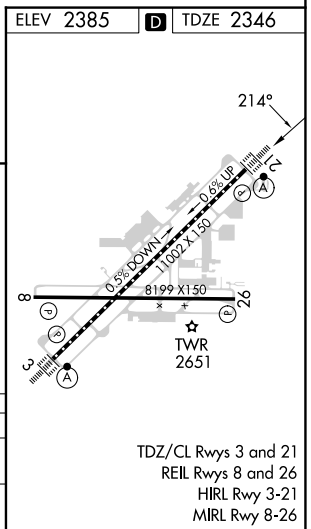
**VOR RWY 21**  
SPOKANE INTL (GEG)

DME required.		ALSF-2 	MISSED APPROACH: Climb to 4200 direct GEG VORTAC and hold, continue climb-in-hold to 4200.	
---------------	--	------------	--	--

ATIS <b>124.325 254.375</b>	SPOKANE APP CON <b>123.75 282.25</b> (205°-025°) <b>133.35 263.0</b> (026°-204°)	SPOKANE TOWER <b>118.3 278.3</b>	GND CON <b>121.9 348.6</b>	CLNC DEL <b>127.55</b>
--------------------------------	--	-------------------------------------	-------------------------------	---------------------------



4200	GEG	VGSI and descent angles not coincident (VGSI Angle 3.00/TCH 73).	
		One Minute Holding Pattern	
		ANASN GEG 10.7	BILING GEG 16.9
		GEG 7.1	GEG 5.9
		3.00° TCH 55	214°
		1.1 NM	3.6 NM
		3900	6000
		214°	5800
		034°	
		6.2 NM	
CATEGORY	A	B	C
S-21	2760/24	414 (400-½)	2760/40 414 (400-¾)
CIRCLING	2960-1 575 (600-1)	2980-1 595 (600-1)	3180-2¼ 795 (800-2¼) 3380-3 995 (1000-3)



TDZ/CL Rws 3 and 21  
REIL Rws 8 and 26  
HIRL Rwy 3-21  
MIRL Rwy 8-26

NW-1, 11 JUL 2024 to 08 AUG 2024

NW-1, 11 JUL 2024 to 08 AUG 2024