

APP CRS	Rwy Idg	N/A
108°	TDZE	N/A
	Apt Elev	1375

RNAV (GPS)-A

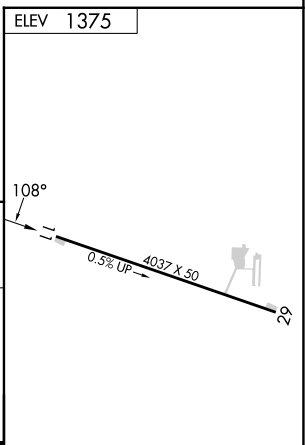
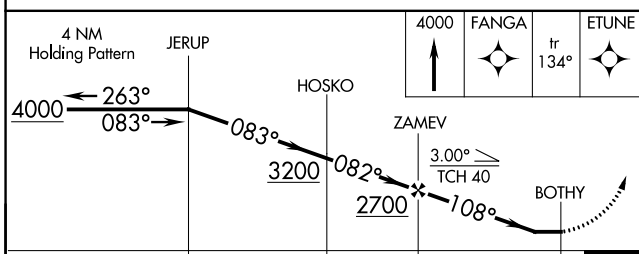
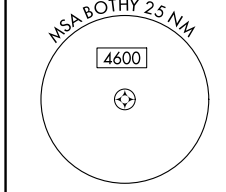
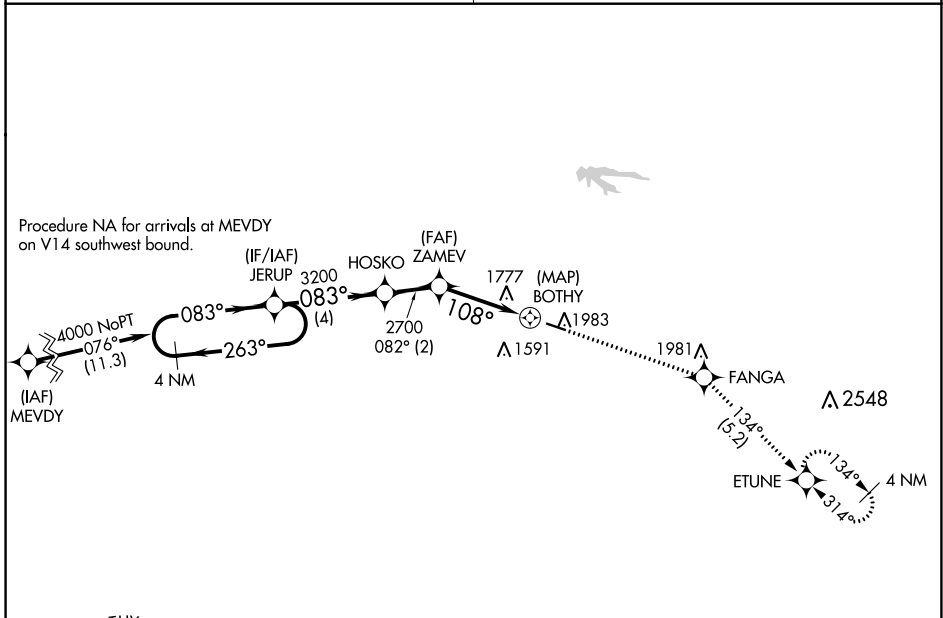
DOWNTOWN (3DW)

NA Circling NA north of Rwy 11-29. DME/DME RNP-0.3 NA.
 Use Springfield-Branson Ntl altimeter setting; when not received, use Branson West altimeter setting and increase all MDA 60 feet.
 Procedure NA at night. Helicopter visibility reduction below 1 SM NA.

MISSED APPROACH: Climb to 4000 direct FANGA and track 134° to ETUNE and hold.

SPRINGFIELD APP CON
124.95 353.925

UNICOM
122.8 (CTAF) 0



CATEGORY	A	B	C	D
CIRCLING	2060-1	685 (700-1)	NA	

MIRL Rwy 11-29 0

NC-3, 11 JUL 2024 to 08 AUG 2024

NC-3, 11 JUL 2024 to 08 AUG 2024