

APP CRS 288°	Rwy Idg TDZE Apt Elev	N/A N/A 1375
------------------------	-----------------------------	-----------------------------------------

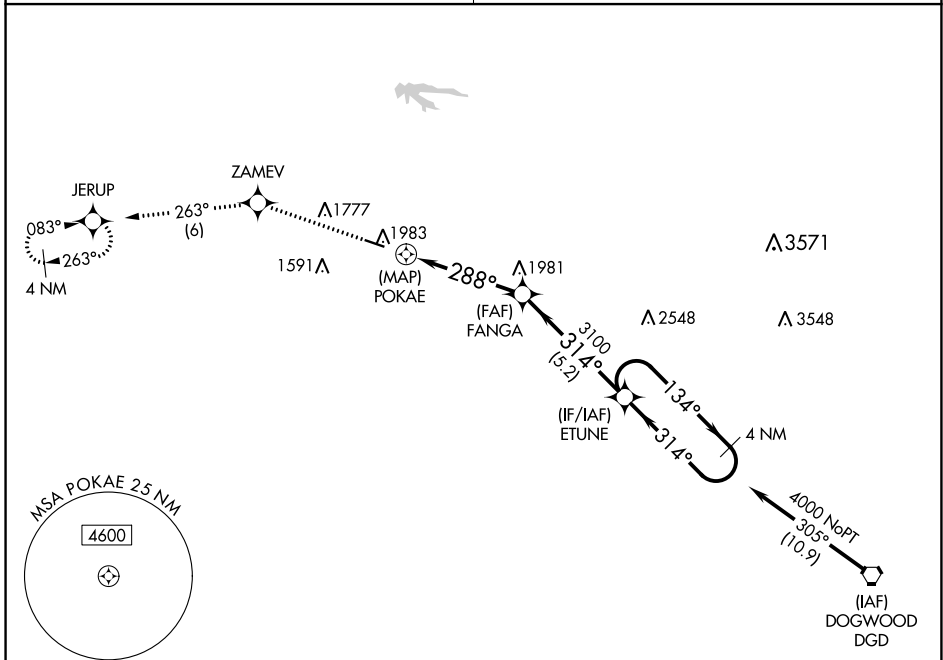
RNAV (GPS)-B DOWNTOWN (3DW)

NA Circling NA north of Rwy 11-29. DME/DME RNP-0.3 NA. Use Springfield-Branson Nil altimeter setting; when not received, use Branson West altimeter setting and increase all MDA 60 feet. Procedure NA at night. Helicopter visibility reduction below 1 SM NA.

MISSED APPROACH: Climb to 4000 direct ZAMEV and track 263° to JERUP and hold.

SPRINGFIELD APP CON
124.95 353.925

UNICOM
122.8 (CTAF) 0



NC-3, 11 JUL 2024 to 08 AUG 2024

NC-3, 11 JUL 2024 to 08 AUG 2024

ELEV 1375

Procedure NA for arrivals on DGD VORTAC airway radials 232 CW 311.

	4000	ZAMEV ✧	tr 263°	JERUP ✧	Visual Segment - Obstacles.
					ETUNE 4 NM Holding Pattern
					FANGA
					POKAE
					3100
					314°
					314°
					4000
					0.9 NM 4.4 NM 5.2 NM
CATEGORY	A	B	C	D	
C CIRCLING	2280-1¼ 905 (1000-1¼)			NA	