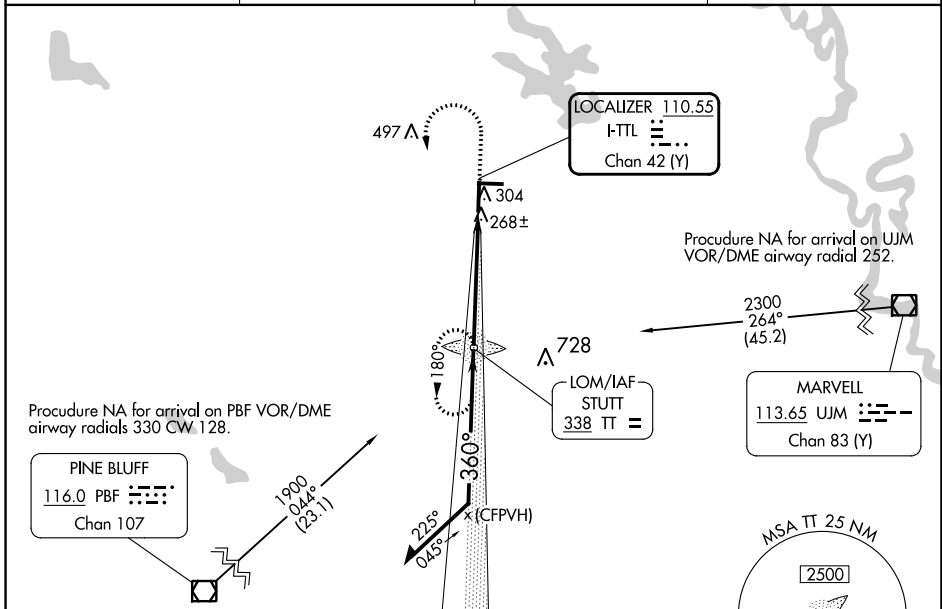


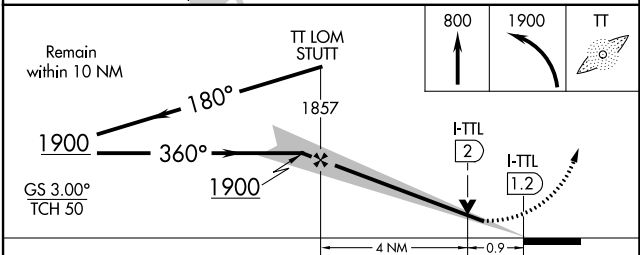
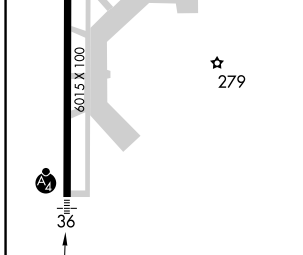
LOC/DME I-TTL 110.55 Chan 42 (Y)	APP CRS 360°	Rwy Idg TDZE Apt Elev	6015 224 224
---	------------------------	-----------------------------	---

ILS or LOC RWY 36
STUTTGART MUNI CARL HUMPHREY FLD (SGT)

ADF required.		MALSF	MISSED APPROACH: Climb to 800 then climbing left turn to 1900 direct STUTT LOM and hold.
<p>⚠ Rwy 36 helicopter visibility reduction below 3/4 SM NA. Inop table does not apply to S-ILS all Cats. For Inop ALS increase S-LOC Cat C visibility to 3/8 SM.</p>			
AWOS-3PT 119,025	LITTLE ROCK APP CON 135.4 353.6	CLNC DEL 123.7	UNICOM 122.8 (CTAF) 0



ELEV 224	TDZE 224
----------	----------



CATEGORY	A	B	C	D
S-ILS 36	424-3/4		200 (200-3/4)	
S-LOC 36	520-3/4		296 (300-3/4)	
CIRCLING	660-1 436 (500-1)	680-1 456 (500-1)	760-1 1/2 536 (600-1 1/2)	520-1 296 (300-1)

FAF to MAP 4.9 NM					
Knots	60	90	120	150	180
Min:Sec	4:54	3:16	2:27	1:58	1:38

SC-1, 11 JUL 2024 to 08 AUG 2024

SC-1, 11 JUL 2024 to 08 AUG 2024