

WAAS CH <b>58303</b> <b>W18A</b>	APP CRS <b>180°</b>	Rwy Idg <b>6015</b> TDZE <b>224</b> Apt Elev <b>224</b>
--	------------------------	---

# RNAV (GPS) RWY 18

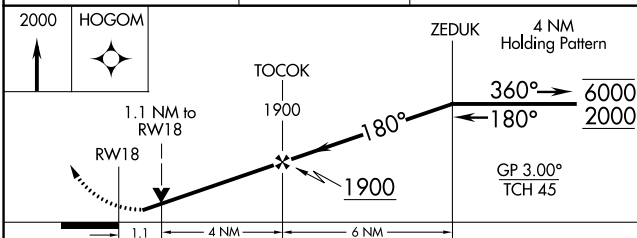
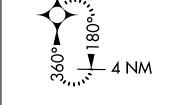
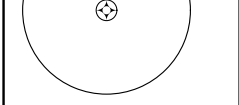
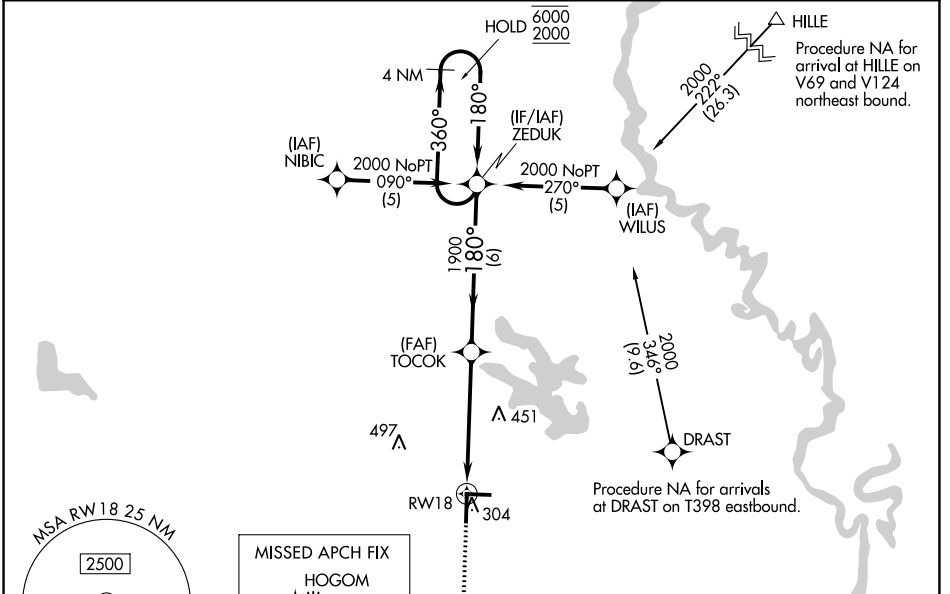
STUTTGART MUNI CARL HUMPHREY FLD (SGT)

RNP APCH - GPS.

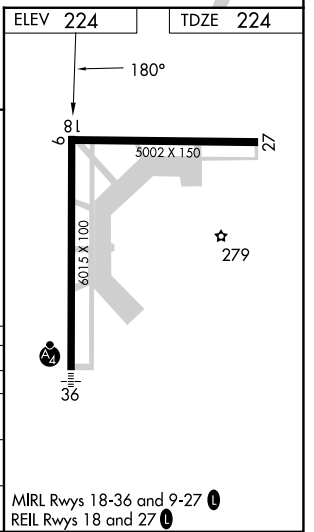
**⚠** For uncompensated Baro-VNAV systems, LNAV/VNAV NA below -15°C or above 48°C. Rwy 18 helicopter visibility reduction below 3/4 SM NA.

**MISSED APPROACH:**  
Climb to 2000 direct HOGOM and hold.

AWOS-3PT <b>119.025</b>	LITTLE ROCK APP CON <b>135.4 353.6</b>	CLNC DEL <b>123.7</b>	UNICOM <b>122.8 (CTAF) 0</b>
----------------------------	---	--------------------------	---------------------------------



CATEGORY	A	B	C	D
LPV DA	474-1 250 (300-1)			
LNAV/VNAV DA	520-7/8 296 (300-7/8)			
LNAV MDA	620-1 436 (500-1)	396 (400-1)	620-1 1/8 396 (400-1 1/8)	620-1 1/4 396 (400-1 1/4)
CIRCLING	660-1 436 (500-1)	680-1 456 (500-1)	760-1 1/2 536 (600-1 1/2)	860-2 636 (700-2)



SC-1, 11 JUL 2024 to 08 AUG 2024

SC-1, 11 JUL 2024 to 08 AUG 2024