

WAAS CH <b>97311</b> <b>W36A</b>	APP CRS <b>360°</b>	Rwy Idg <b>6015</b> TDZE <b>224</b> Apt Elev <b>224</b>
--	------------------------	---

# RNAV (GPS) RWY 36

STUTTGART MUNI CARL HUMPHREY FLD (SGT)

RNP APCH

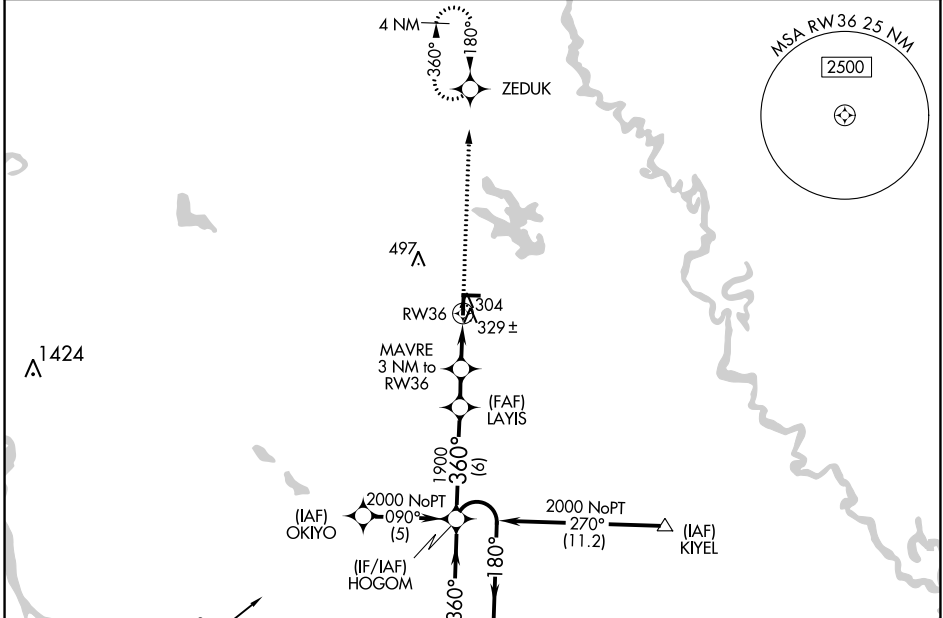
When local altimeter setting not received, use Bill and Hillary Clinton Nil/Adams Fld altimeter setting; increase LPV DA to 556 and all visibilities  $\frac{1}{8}$  SM; increase all MDAs 100 feet and visibility Cats C and D  $\frac{1}{4}$  SM. For Inop MALSF when using Bill and Hillary Clinton Nil/Adams Fld altimeter setting, increase LPV all Cats visibility to  $1\frac{1}{8}$  mile. VDP NA when using Bill and Hillary Clinton Nil/Adams Fld altimeter setting.

MALSF



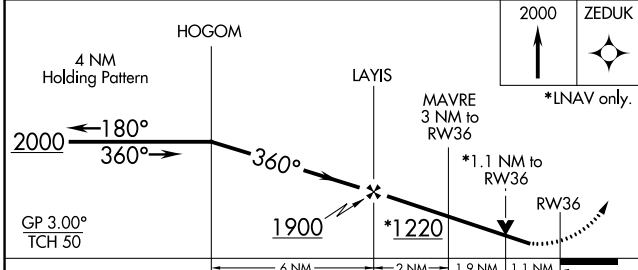
MISSED APPROACH:  
Climb to 2000 direct ZEDUK and hold.

AWOS-3PT <b>119.025</b>	LITTLE ROCK APP CON <b>135.4 353.6</b>	CLINC DEL <b>123.7</b>	UNICOM <b>122.8</b> (CTAF)
----------------------------	---	---------------------------	-------------------------------

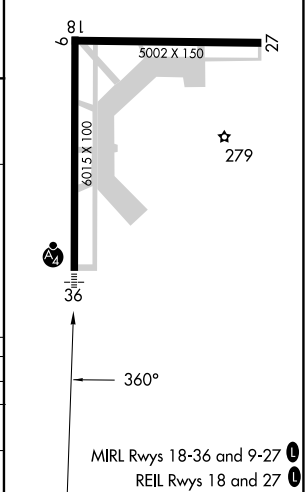


SC-1, 11 JUL 2024 to 08 AUG 2024

SC-1, 11 JUL 2024 to 08 AUG 2024



ELEV 224	TDZE 224
----------	----------



CATEGORY	A	B	C	D
LPV DA		474- $\frac{3}{4}$	250 (300- $\frac{3}{4}$ )	
LNVA MDA	620- $\frac{3}{4}$	396 (400- $\frac{3}{4}$ )		620- $\frac{1}{4}$ 396 (400- $\frac{1}{4}$ )
CIRCLING	660-1 436 (500-1)	680-1 456 (500-1)	760- $1\frac{1}{2}$ 536 (600- $1\frac{1}{2}$ )	860-2 636 (700-2)

MIRL Rwy 18-36 and 9-27   
REIL Rwy 18 and 27