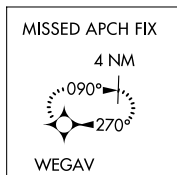
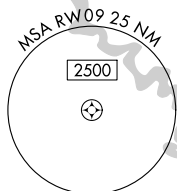
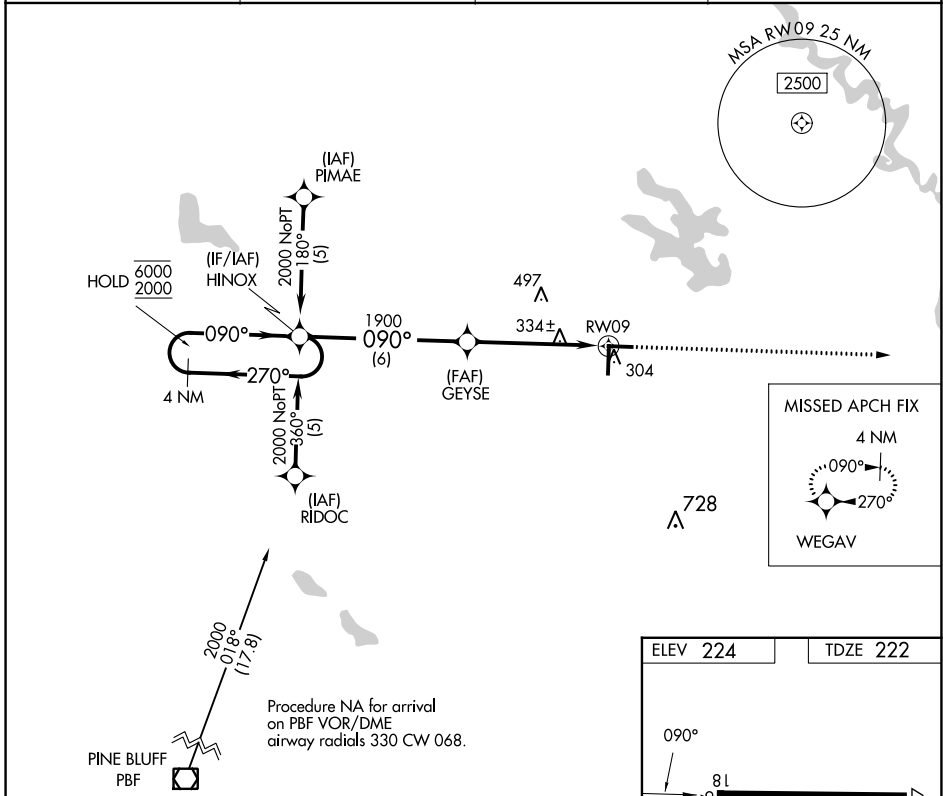


APP CRS **090°**
 Rwy Idg **5002**
 TDZE **222**
 Apt Elev **224**

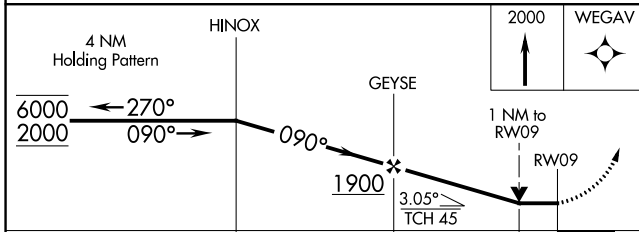
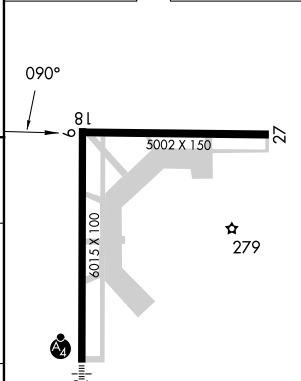
RNAV (GPS) RWY 9

STUTTGART MUNI CARL HUMPHREY FLD (SGT)

RNP APCH - GPS.		MISSED APPROACH: Climb to 2000 direct WEGAV and hold.	
<p>▼ ▲</p> Rwy 9 helicopter visibility reduction below 3/4 SM NA.		AWOS-3PT 119.025	LITTLE ROCK APP CON 135.4 353.6
		CLNC DEL 123.7	UNICOM 122.8 (CTAF) 0



ELEV 224 TDZE 222



CATEGORY	A	B	C	D
LNVA MDA	600-1 378 (400-1)			600-1 1/4 378 (400-1 1/4)
CIRCLING	660-1 436 (500-1)	680-1 456 (500-1)	760-1 1/2 536 (600-1 1/2)	860-2 636 (700-2)

MIRL Rwy 18-36 and 9-27 **0**
 REIL Rwy 18 and 27 **0**

SC-1, 11 JUL 2024 to 08 AUG 2024

SC-1, 11 JUL 2024 to 08 AUG 2024