

HI-ILS or LOC Z RWY 4L

LOC I-SSC 110.1	APCH CRS 043°	Rwy Idg TDZE Arprt Elev	4L 10,014 240 241	4R 8014 236 241	JAL-409 [USAF]	SHAW AFB (KSSC)
---------------------------	-------------------------	-------------------------------	---	---	----------------	-----------------

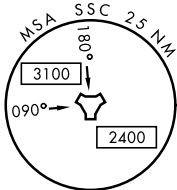
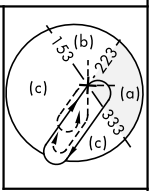
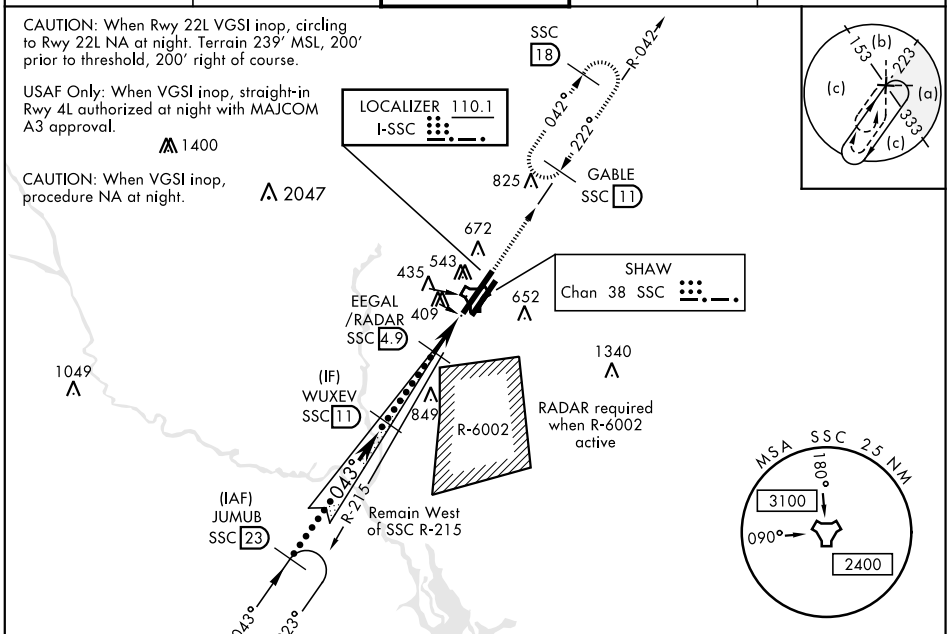
RADAR or DME Required.

* When ALS inop, increase vis to 1 5/8 miles.

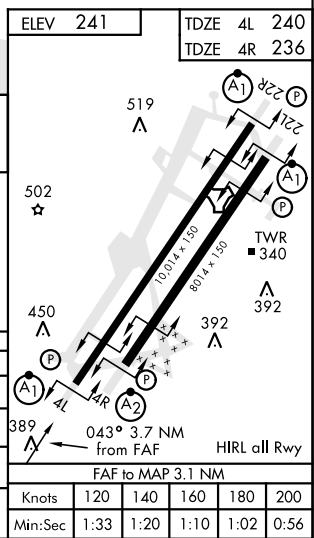
ALSIF-1

MISSED APPROACH: Climbing to 2000, intercept SSC TACAN R-042 to GABLE and hold.

ATIS ★ 132.125 270.1	SHAW APP CON 125.4 318.1	SHAW TOWER ★ 126.65 254.25	GND CON 126.1 275.8	CLNC DEL 126.1 275.8
--------------------------------	------------------------------------	--------------------------------------	-------------------------------	--------------------------------



CATEGORY	C	D	E
S-ILS 4L *	490/50	250	(300-1)
S-LOC 4L *	780/55	540	(600-1)
SIDESTEP * 4R	780-1 3/8	544	(600-1 3/8)
CIRCLING	1000-2 1/4 759 (800-2 1/4)	1000-2 1/2 759 (800-2 1/2)	1000-2 3/4 759 (800-2 3/4)



HI-ILS or LOC Z RWY 4L

SE-2, 11 JUL 2024 to 08 AUG 2024

SE-2, 11 JUL 2024 to 08 AUG 2024