

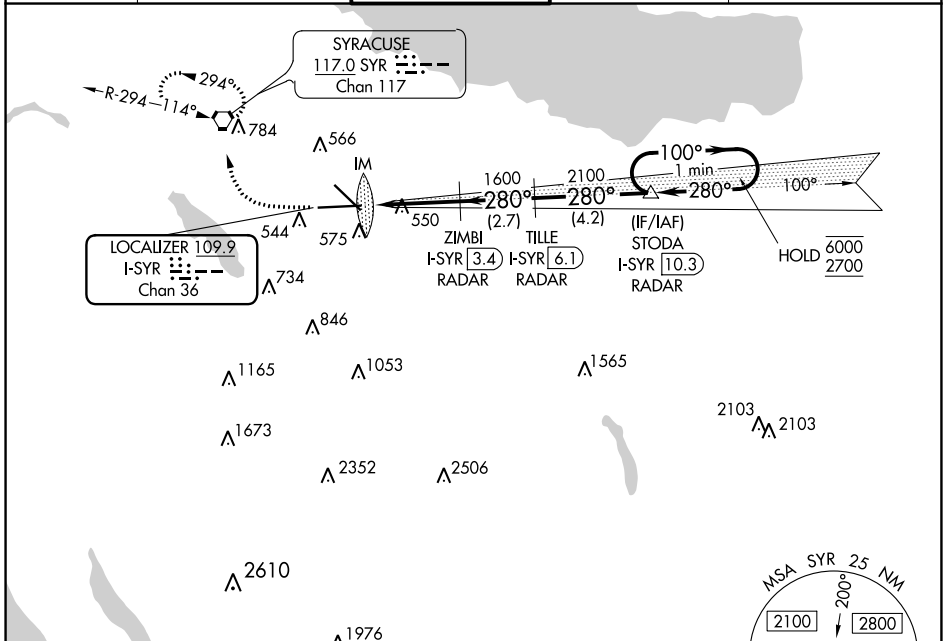
LOC/DME I-SYR 109.9 Chan 36	APP CRS 280°	Rwy Idg TDZE Apt Elev	9014 413 421
---	------------------------	-----------------------------	---

ILS or LOC RWY 28

SYRACUSE HANCOCK INTL (SYR)

DME or RADAR required.		ALSf-2	MISSED APPROACH: Climb to 1100 then climbing right turn to 3000 direct SYR VORTAC and hold, continue climb-in-hold to 3000.
------------------------	--	--------	---

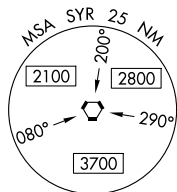
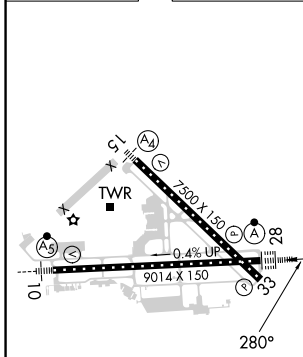
ATIS 124.225	SYRACUSE APP CON 126.125 269.125	SYRACUSE TOWER 120.3 239.0	GND CON 121.7 348.6	CLNC DEL 125.05 257.775
------------------------	--	--------------------------------------	-------------------------------	-----------------------------------



NE-2, 11 JUL 2024 to 08 AUG 2024

NE-2, 11 JUL 2024 to 08 AUG 2024

ELEV 421	D	TDZE 413
----------	----------	----------



1100	3000	SYR	*LOC only	STODA I-SYR [10.3] RADAR	One Minute Holding Pattern
			ZIMBI I-SYR [3.4] RADAR	TILLE I-SYR [6.1] RADAR	
		I-SYR [0.2]	*I-SYR [0.9]	1600	100° → 6000
		IM	1600	2100	← 280° 2700
		0.2	0.9	2.5 NM	2.7 NM
		4.2 NM	GS 3.00° TCH 60		

TDZ/CL Rwy 28	HIRL Rwys 10-28 and 15-33				
FAF to MAP 3.6 NM					
Knots	60	90	120	150	180
Min:Sec	3:36	2:24	1:48	1:26	1:12
CIRCLING	900-1 479 (500-1)	920-1 499 (500-1)	1020-1½ 599 (600-1½)	1180-2½ 759 (800-2½)	