

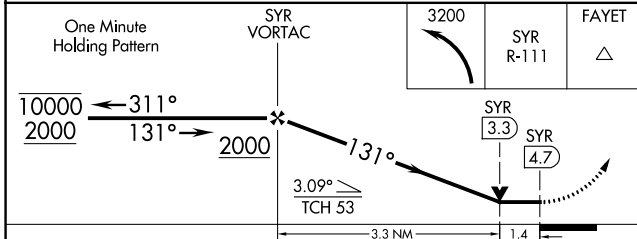
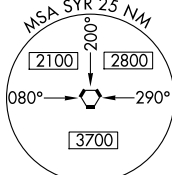
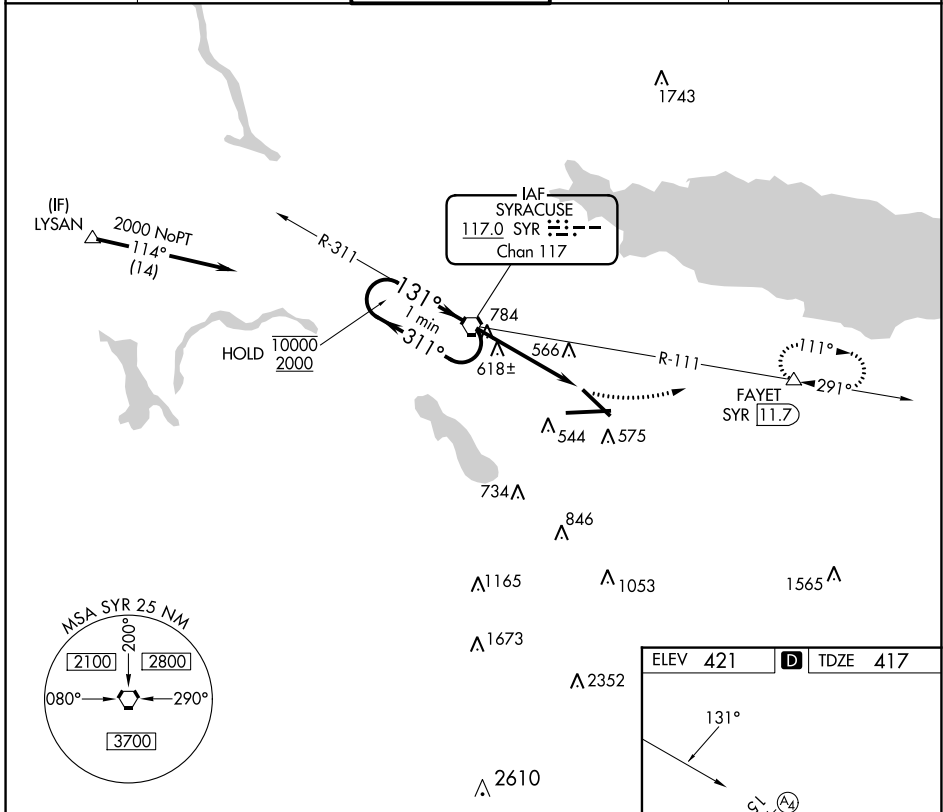
VORTAC SYR 117.0	APP CRS 131°	Rwy Idg TDZE Apt Elev	7500 417 421
Chan 117			

VOR RWY 15

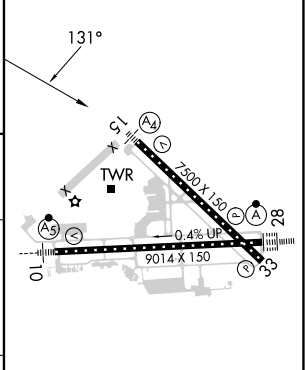
SYRACUSE HANCOCK INTL (SYR)

DME required.	MALS	MISSED APPROACH: Climbing left turn to 3200 on SYR VORTAC R-111 to FAYET/11.7 DME and hold, continue climb-in-hold to 3200.
<p>▼ Rwy 15 helicopter visibility reduction below 3/4 SM NA.</p> <p>▲ For inop ALS, increase Cat C/D visibility to 1 1/2 SM.</p>		

ATIS 124.225	SYRACUSE APP CON 126.125 269.125	SYRACUSE TOWER 120.3 239.0	GND CON 121.7 348.6	CLNC DEL 125.05 257.775
------------------------	--	--------------------------------------	-------------------------------	-----------------------------------



ELEV 421	D TDZE 417
----------	-------------------



CATEGORY	A	B	C	D
S-15	920-3/4 503 (500-3/4)		920-1 1/4 503 (500-1 1/4)	
C CIRCLING	920-1 499 (500-1)		1020-1 1/2 599 (600-1 1/2)	1180-2 1/2 759 (800-2 1/2)

TDZ/CL Rwy 28	
HIRL Rwy 10-28 and 15-33	
FAF to MAP 4.7 NM	
Knots	60 90 120 150 180
Min:Sec	4:42 3:08 2:21 1:53 1:34

NE-2, 11 JUL 2024 to 08 AUG 2024

NE-2, 11 JUL 2024 to 08 AUG 2024