

WAAS CH 50406 W01A	APP CRS 007°	Rwy Idg 10800 TDZE 11 Apt Elev 26
---------------------------------	------------------------	--

RNAV (GPS) RWY 1L

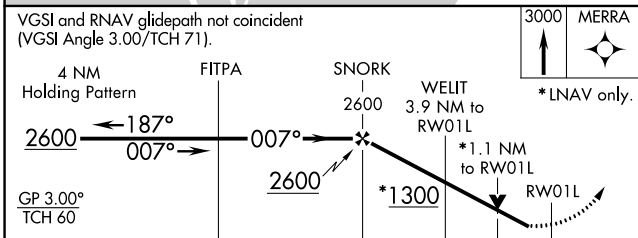
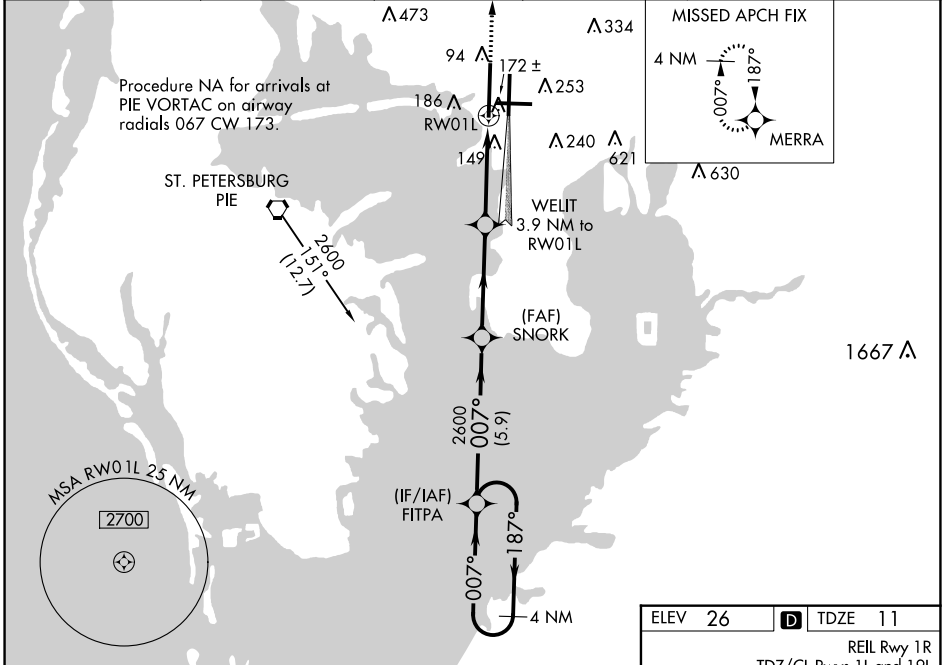
TAMPA INTL (TPA)

⚠ For uncompensated Baro-VNAV systems, LNAV/VNAV NA below -15°C (5°F) or above 43°C (109°F). DME/DME RNP-0.3 NA. For inop ALSF, increase LPV Cat E visibility to RVR 4000, LNAV/VNAV Cat E visibility to 1 3/8 mile, and LNAV Cat E visibility to RVR 6000. Simultaneous approach authorized with Rwy 1R. LNAV procedure NA during simultaneous operations. Use of FD or AP providing RNAV track guidance required during simultaneous operations.

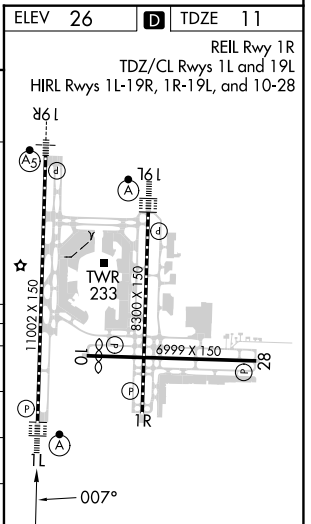
ALSF-2
ⓐ

MISSED APPROACH:
Climb to 3000 direct MERRA and hold.

ARR 126.45	D-ATIS 128.475	DEP 118.5 307.175	TAMPA APP CON 119.5 269.4	TAMPA TOWER 119.5 269.4	GND CON 121.7 269.4	CLNC DEL 133.6	CPDLC
----------------------	--------------------------	-----------------------------	-------------------------------------	-----------------------------------	-------------------------------	--------------------------	-------



CATEGORY	A	B	C	D	E
LPV DA	211/18		200 (200-1/2)		
LNAV/VNAV DA	431/45		420 (500-7/8)		
LNAV MDA	440/24	429 (500-1/2)		440/40 429 (500-3/4)	
C CIRCLING	560-1	534 (600-1)		680-1 3/4 654 (700-1 3/4) 980-3 954 (1000-3)	



SE-3, 11 JUL 2024 to 08 AUG 2024

SE-3, 11 JUL 2024 to 08 AUG 2024