

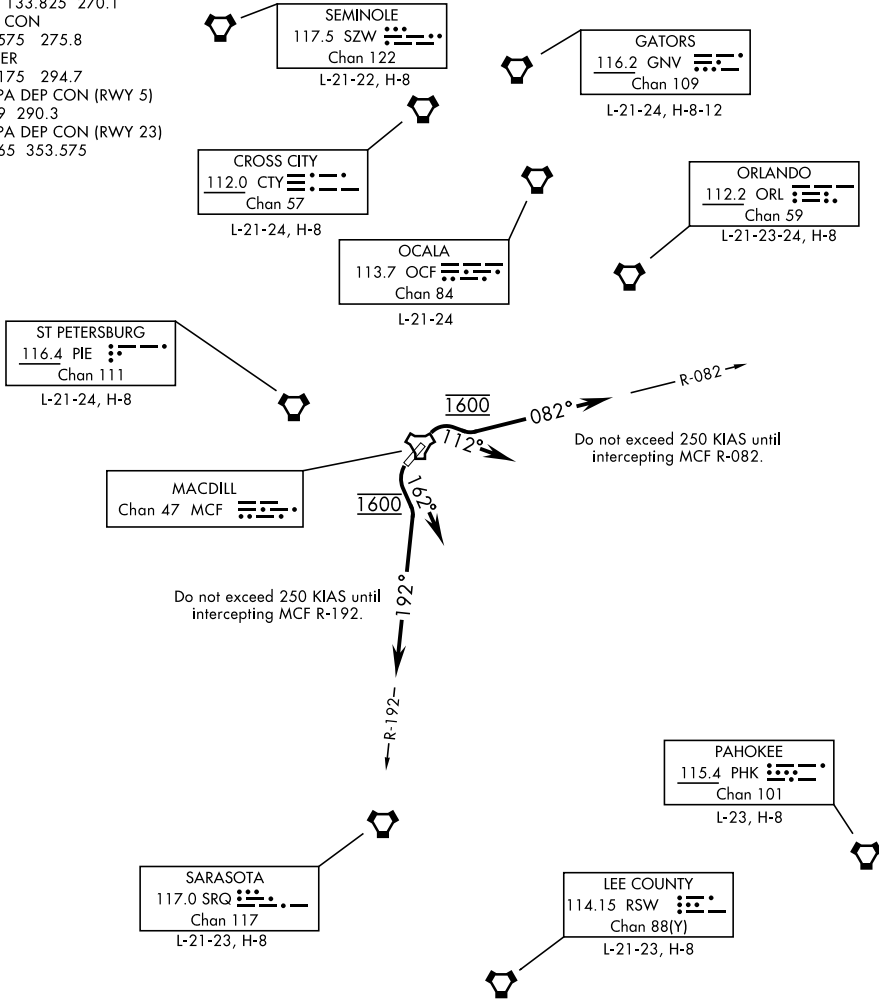
MACDILL ONE DEPARTURE (MCF1 • MCF)

AL-418 [USAF]

MACDILL AFB (KMCF)

TAMPA, FLORIDA

ATIS 133.825 270.1
 GND CON
 118.575 275.8
 TOWER
 120.175 294.7
 TAMPA DEP CON (RWY 5)
 119.9 290.3
 TAMPA DEP CON (RWY 23)
 119.65 353.575



SE-3, 11 JUL 2024 to 08 AUG 2024

SE-3, 11 JUL 2024 to 08 AUG 2024

NOTE: Chart not to scale

NA for CAT E aircraft

DEPARTURE ROUTE DESCRIPTION

TAKEOFF RWY 5: Climbing right turn heading 112°, maintain 1600, intercept MCF R-082 outbound, expect RADAR vectors. Expect clearance to filed altitude within 10 min after departure.

TAKEOFF RWY 23: Climbing left turn heading 162°, maintain 1600, intercept MCF R-192 outbound, expect RADAR vectors. Expect clearance to filed altitude within 10 min after departure.

MACDILL ONE DEPARTURE (MCF1 • MCF)

Amdt 1 31DEC20

TAMPA, FLORIDA
MACDILL AFB (KMCF)