

TAMPA, FLORIDA

# RNAV (GPS) RWY 23

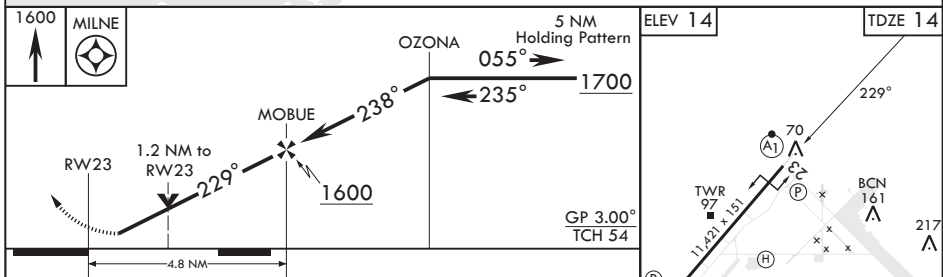
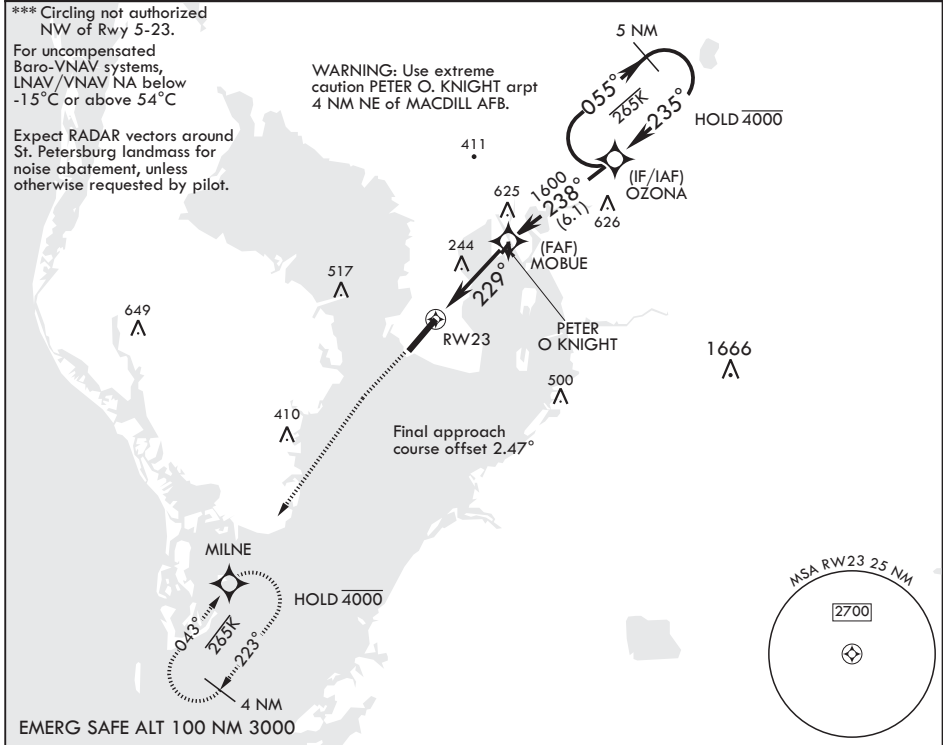
APCH CRS	Rwy ldg	11,421
229°	TDZE	14
	Arprt Elev	14

AL-418 (USAF)

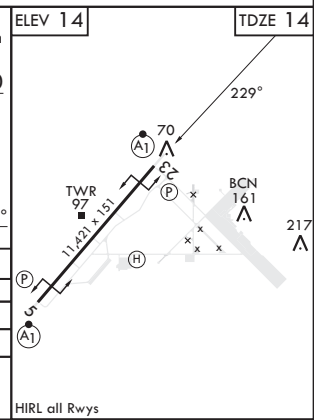
MACDILL AFB (KMCF)

RNP APCH	ALSF-1	MISSED APPROACH: Climb to 1600, then climbing left turn to 1600 direct MILNE and hold.
<p>* When ALS inop, increase vis to 1 1/4 miles.                  ** When ALS inop, increase CAT AB RVR to 55, vis to 1 mile; CAT CDE vis to 1 1/4 miles.</p>		

ATIS <b>133.825 270.1</b>	TAMPA APP CON <b>124.95 354.0</b>	TOWER <b>120.175 294.7</b>	GND CON <b>118.575 275.8</b>
------------------------------	--------------------------------------	-------------------------------	---------------------------------



CATEGORY	A	B	C	D	E
LNAV/VNAV DA*	440/40		426	(500-¾)	
LNAV MDA**	440/24	426 (500-½)	440/40	426	(500-¾)
CIRCLING***	500-1 486 (500-1)	540-1 526 (600-1)	540-1½ 526 (600-1½)	580-2 566 (600-2)	1020-3 1006 (1100-3)



TAMPA, FLORIDA  
 Amdt 2 10AUG23

27°51'N - 82°31'W

MACDILL AFB (KMCF)

# RNAV (GPS) RWY 23

SE-3, 11 JUL 2024 to 08 AUG 2024

SE-3, 11 JUL 2024 to 08 AUG 2024