

TAMPA, FLORIDA

# TACAN RWY 23

TACAN MCF Chan 47	APCH CRS 240°	Rwy ldg TDZE Arprt Elev	11,421 14 14
-------------------	---------------	-------------------------	--------------------

AL-418 (USAF)

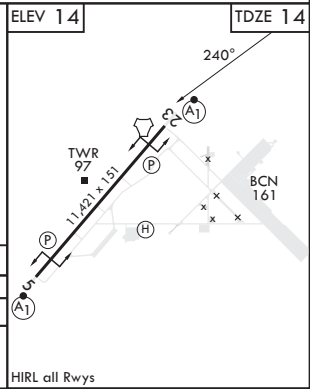
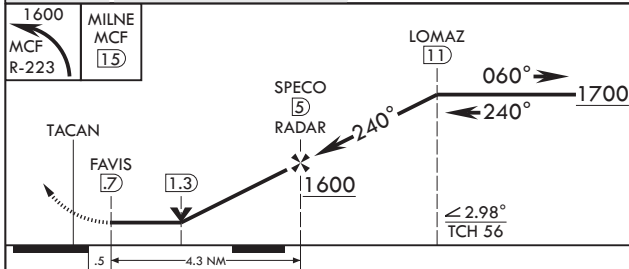
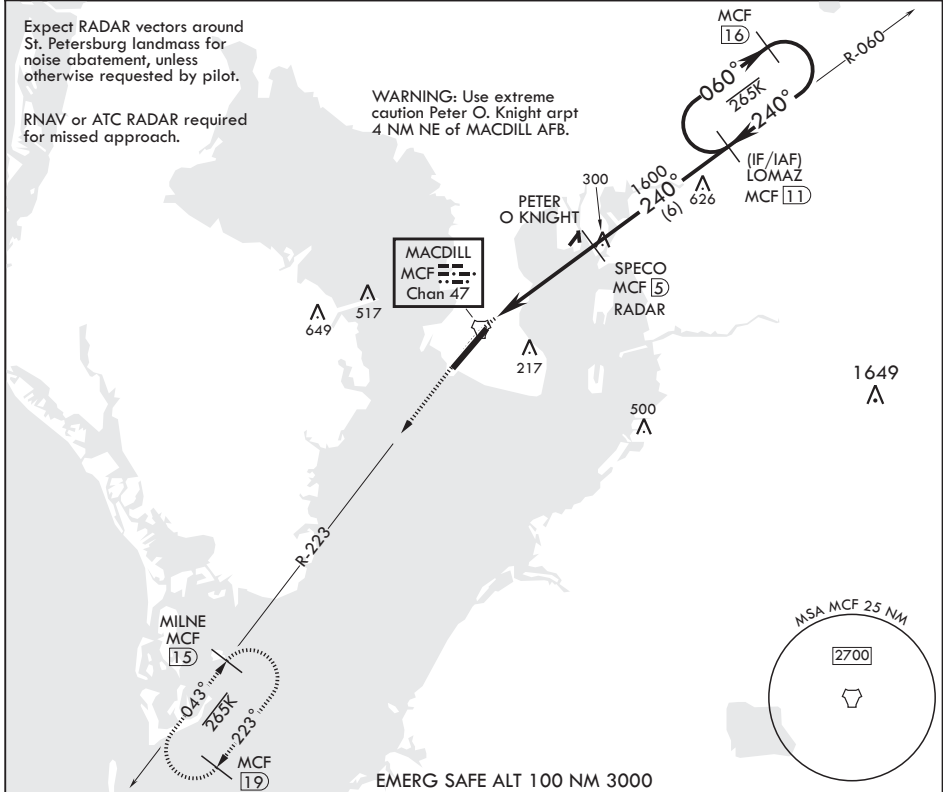
MACDILL AFB (KMCF)

\* When ALS inop, increase CAT AB RVR to 55, vis to 1 mile; CAT CDE vis to 1 1/4 miles.  
 \*\* Circling not authorized NW of Rwy 5-23.



MISSED APPROACH: Climb to 1600 via MCF TACAN R-223 to MILNE and hold.

ATIS 133.825 270.1	TAMPA APP CON 124.95 354.0	TOWER 120.175 294.7	GND CON 118.575 275.8
-----------------------	-------------------------------	------------------------	--------------------------



CATEGORY	A	B	C	D	E
S-23*	440/24 426 (500-1/2)	440/40 426 (500-3/4)	440/40 426 (500-3/4)	440/40 426 (500-3/4)	440/40 426 (500-3/4)
CIRCLING**	520-1 486 (600-1)	540-1 526 (600-1)	540-1 1/2 526 (600-1 1/2)	580-2 566 (600-2)	1020-3 1006 (1100-3)

TAMPA, FLORIDA  
Amdt 2 10AUG23

27°51'N - 82°31'W

MACDILL AFB (KMCF)

# TACAN RWY 23

SE-3, 11 JUL 2024 to 08 AUG 2024

SE-3, 11 JUL 2024 to 08 AUG 2024