

TAMPA, FLORIDA

TACAN RWY 5

TACAN MCF Chan 47	APCH CRS 043°	Rwy Idg 11,421 TDZE 10 Arprt Elev 14
-----------------------------	-------------------------	-----------------------------------------------------------------------

AL-418 [USAF]

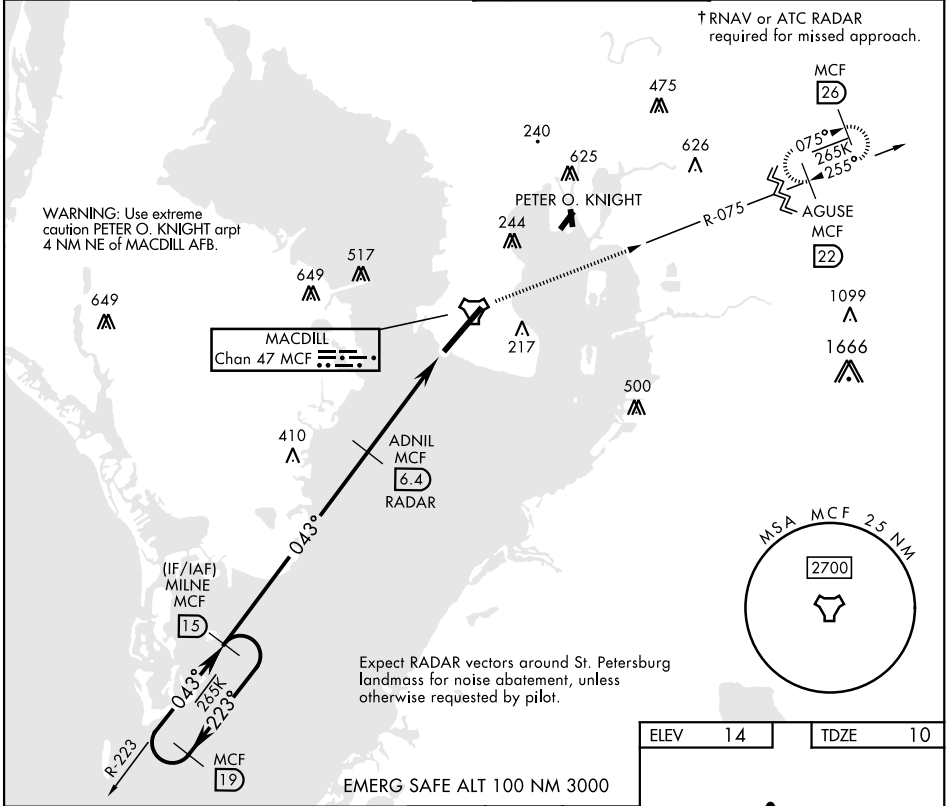
MACDILL AFB (KMCF)

* When ALS inop, increase CAT AB RVR to 55, vis to 1 mile; CAT CDE RVR to 60, vis to 1½ miles.
 ** Circling not authorized NW of Rwy 5-23.



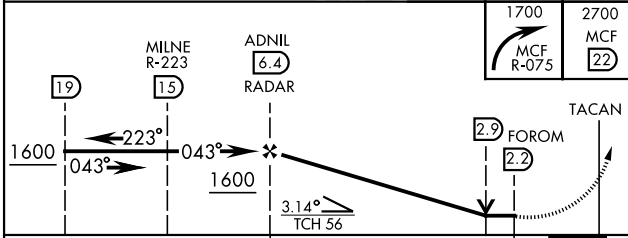
† MISSED APPROACH: Climb to 2700 via MCF R-075 to 22 DME and hold. Cross 8 DME at 1700.

ATIS 133.825 270.1	TAMPA APP CON 124.95 354.0	TOWER 120.175 294.7	GND CON 118.575 275.8
------------------------------	--------------------------------------	-------------------------------	---------------------------------

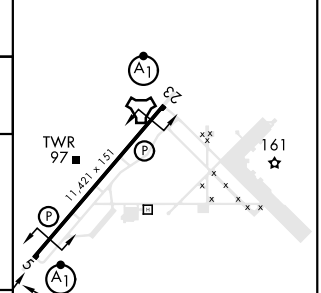


SE-3, 11 JUL 2024 to 08 AUG 2024

SE-3, 11 JUL 2024 to 08 AUG 2024



ELEV	14	TDZE	10
------	----	------	----



CATEGORY	A	B	C	D	E
S-5*	420/24 410 (500-½)		420/40 410 (500-¾)		
CIRCLING**	500-1 486 (500-1)	540-1 526 (600-1)	540-1½ 526 (600-1½)	580-2 566 (600-2)	1020-3 1006 (1100-3)

HIRL Rwy 5-23

TAMPA, FLORIDA
Amdt 2 10AUG23

27°51'N-82°31'W

MACDILL AFB (KMCF)

TACAN RWY 5