

WAAS Ch <b>93899</b>	APP CRS <b>040°</b>	Rwy Idg <b>6602</b> TDZE <b>360</b> Apt Elev <b>390</b>
-------------------------	------------------------	---

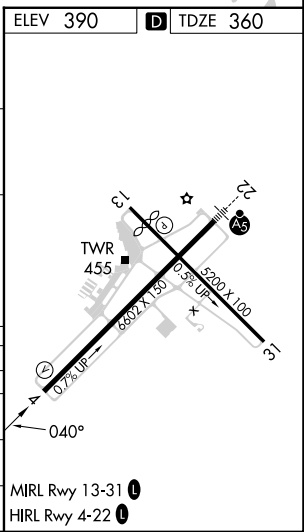
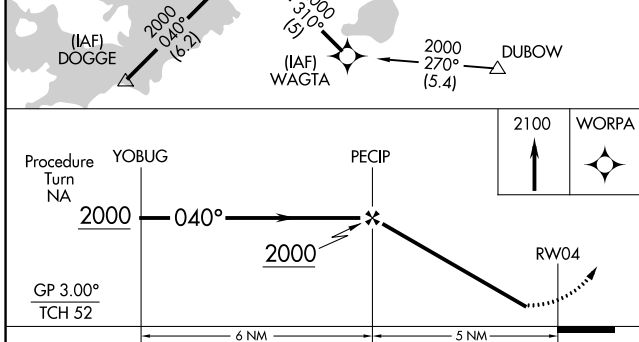
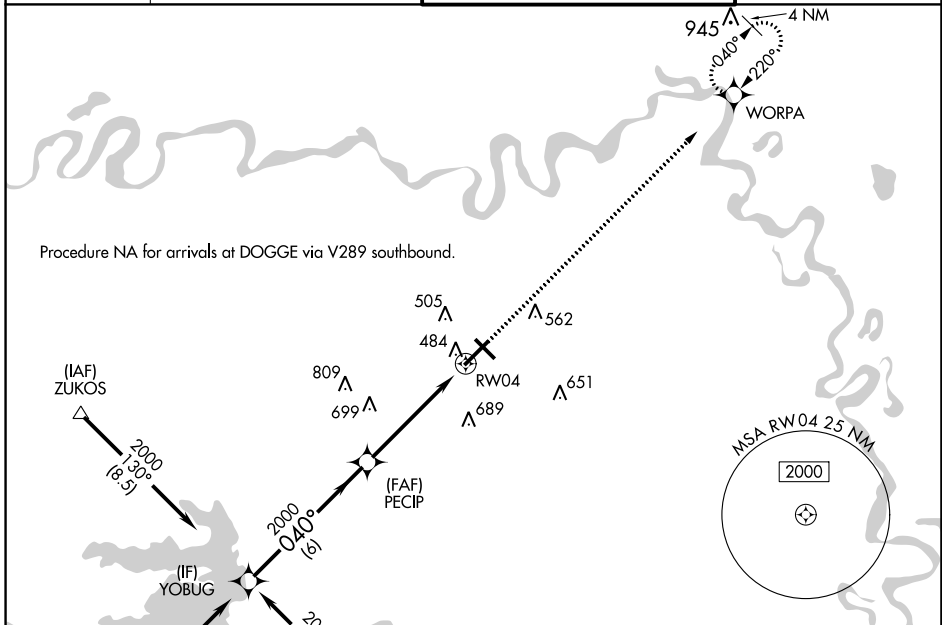
# RNAV (GPS) RWY 4

TEXARKANA RGNL-WEBB FLD (TXK)

**⚠** DME/DME RNP-0.3 NA. Visibility reduction by helicopters NA. For uncompensated Baro-VNAV systems, LNAV/VNAV NA below -15°C (5°F) or above 48°C (118°F). When local altimeter setting not received, use J Lynn Helms Sevier County altimeter setting and increase all DA/MDA 100 feet, increase LPV and LNAV/VNAV all Cats visibility ¼ mile, LNAV and Circling Cat C and D visibility ½ mile. Baro-VNAV NA when using J Lynn Helms Sevier County altimeter setting.

**MISSED APPROACH:**  
Climb to 2100 direct WORPA and hold.

ATIS <b>120.2</b>	FORT WORTH CENTER <b>123.925 269.475</b>	TEXARKANA TOWER* <b>123.875 (CTAF) 0 235.625</b>	GND CON <b>119.225</b>
----------------------	---	---	---------------------------



CATEGORY	A	B	C	D
LPV DA	613-1 253 (300-1)			
LNAV/VNAV DA	866-1¾ 506 (500-1¾)			
LNAV MDA	900-1 540 (600-1)	900-1½ 540 (600-1½)		900-1¾ 540 (600-1¾)
CIRCLING	900-1¾ 510 (600-1¾)	1000-2 610 (700-2)		1080-2¼ 690 (700-2¼)

SC-1, 11 JUL 2024 to 08 AUG 2024

SC-1, 11 JUL 2024 to 08 AUG 2024