

WAAS CH <b>70524</b> <b>W32A</b>	APP CRS <b>321°</b>	Rwy Idg TDZE Apt Elev	<b>4927</b> <b>621</b> <b>623</b>
--	------------------------	-----------------------------	---

# RNAV (GPS) RWY 32

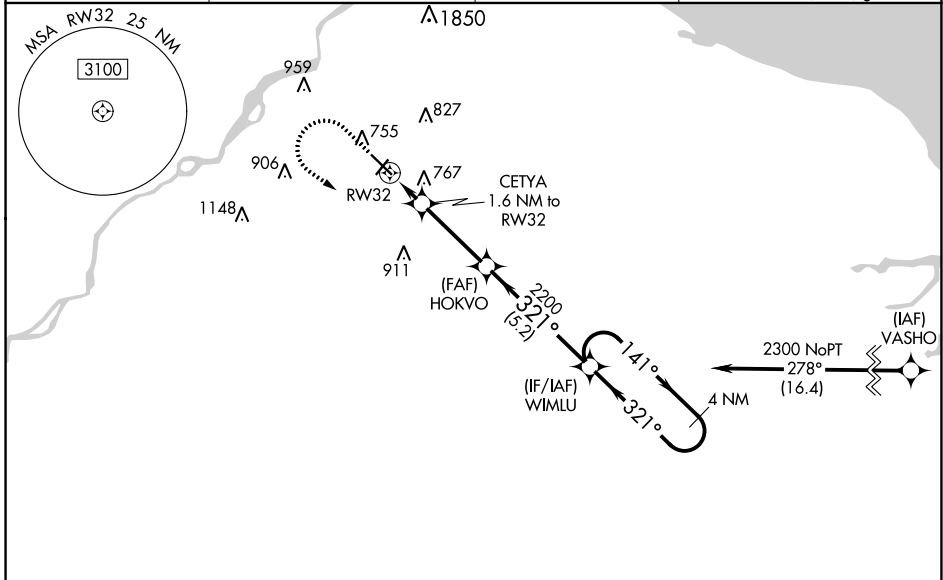
TOLEDO EXEC (TDZ)

**RNP APCH.**

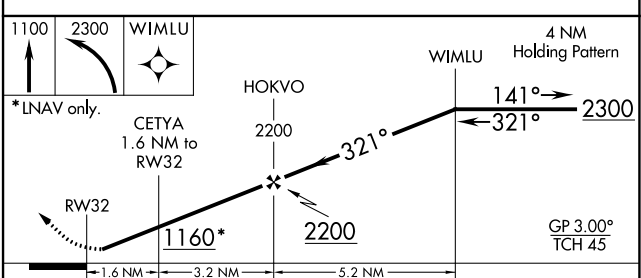
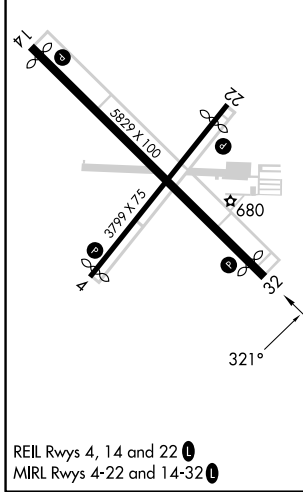
**⚠** Circling Rwy 14 NA at night. Baro-VNAV NA when using Toledo Express altimeter setting. For uncompensated Baro-VNAV systems, LNAV/VNAV NA below -20°C (-4°F) or above 54°C (130°F). Rwy 32 helicopter visibility reduction below 3/4 SM NA. When local altimeter setting not received, use Toledo Express altimeter setting and increase LPV DA to 914, LNAV/VNAV to 1123, increase LPV all Cats visibility 1/8 SM. Increase all MDA 60 feet and increase LNAV Cats C and D and Circling Cat D visibility 1/4 SM.

**MISSED APPROACH:** Climb to 1100 then climbing left turn to 2300 direct WIMLU and hold.

ASOS <b>121.575</b>	TOLEDO APP CON <b>126.1 307.0</b>	CLNC DEL <b>125.6</b>	UNICOM <b>123.05 (CTAF)</b> <b>📻</b>
------------------------	--------------------------------------	--------------------------	---



ELEV <b>623</b>	<b>D</b>	TDZE <b>621</b>
-----------------	----------	-----------------



CATEGORY	A	B	C	D
LPV DA	871-3/4		250 (300-3/4)	
LNAV/VNAV DA	1080-1 3/8		459 (500-1 3/8)	
LNAV MDA	1020-1 399 (400-1)		1020-1 3/8 399 (400-1 3/8)	
<b>C</b> CIRCLING	1080-1 457 (500-1)	1100-1 477 (500-1)	1200-1 1/2 577 (600-1 1/2)	1320-2 1/4 697 (700-2 1/4)