

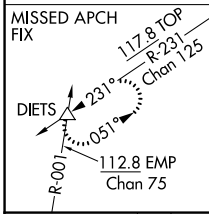
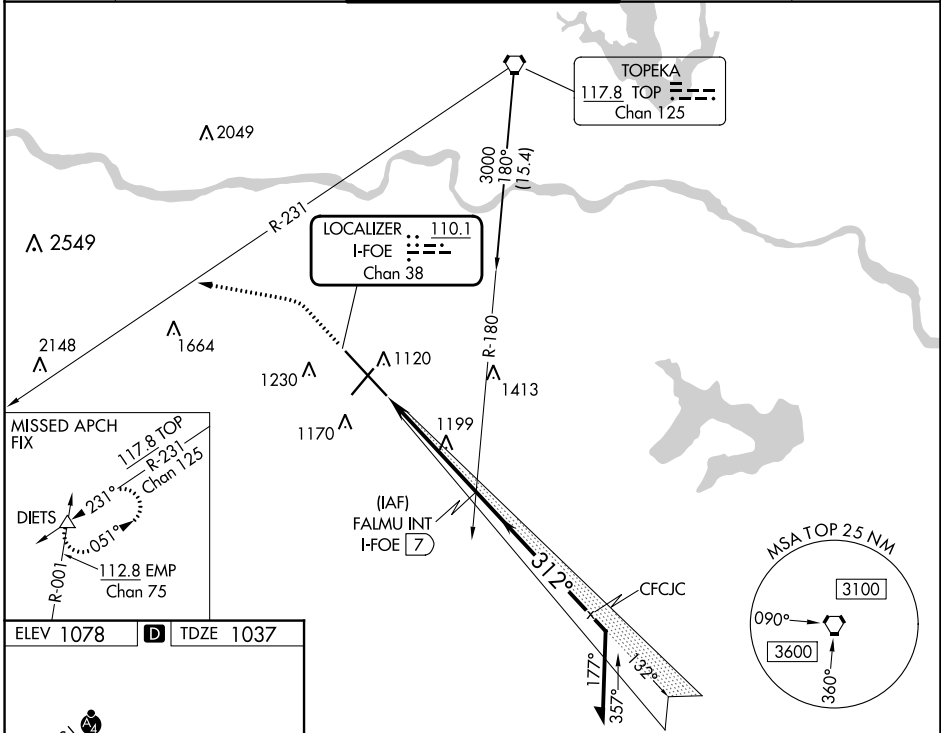
LOC/DME I-FOE <b>110.1</b> Chan <b>38</b>	APP CRS <b>312°</b>	Rwy Idg <b>12803</b> TDZE <b>1037</b> Apt Elev <b>1078</b>
---	------------------------	--

# ILS or LOC RWY 31

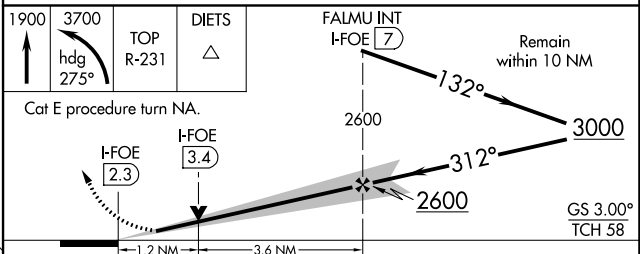
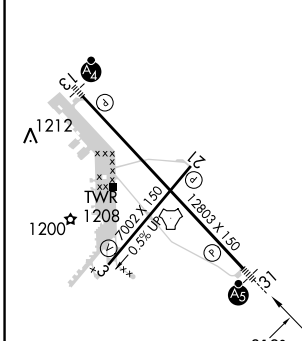
TOPEKA RGNL (FOE)

<p>RAДАР required for Cat E for procedure entry.</p> <p>▼ For inop ALS, increase S-ILS Cat E visibility to RVR 4000 and S-LOC Cat E visibility to 1¼ SM. *RVR 1800 authorized with use of FD or AP or HUD to DA.</p>		<p>MALSR</p>	<p>MISSED APPROACH: Climb to 1900 then climbing left turn to 3700 on heading 275° and on TOP VORTAC R-231 to DIETS INT and hold.</p>
--	--	--------------	--

ATIS <b>128.25</b>	KANSAS CITY CENTER <b>123.8 343.7</b>	FORBES TOWER* <b>120.8 (CTAF) 0 340.2</b>	GND CON <b>118.425 275.8</b>	UNICOM <b>122.95</b>
-----------------------	--	--	---------------------------------	-------------------------



ELEV 1078	D	TDZE 1037
-----------	---	-----------



REIL Rws 3, 13 and 21	1212 A	1200 A	1208 A	1203 X 150	1203 X 150
MIRL Rwy 3-21	1200 A	1208 A	1203 X 150	1203 X 150	1203 X 150
HIRL Rwy 13-31	1200 A	1208 A	1203 X 150	1203 X 150	1203 X 150
FAF to MAP 4.7 NM	1200 A	1208 A	1203 X 150	1203 X 150	1203 X 150
Knots	60	90	120	150	180
Min:Sec	4:42	3:08	2:21	1:53	1:34
CIRCLING	1520-1 442 (500-1)	1580-1 502 (600-1)	1580-1½ 502 (600-1½)	1700-2 622 (700-2)	1720-2¼ 642 (700-2¼)

NC-2, 11 JUL 2024 to 08 AUG 2024

NC-2, 11 JUL 2024 to 08 AUG 2024