

TACAN FOE Chan 53 (111.6)	APP CRS 304°	Rwy Idg TDZE Apt Elev	12803 1037 1078
---	------------------------	-----------------------------	--

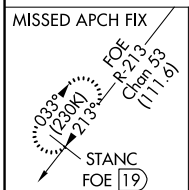
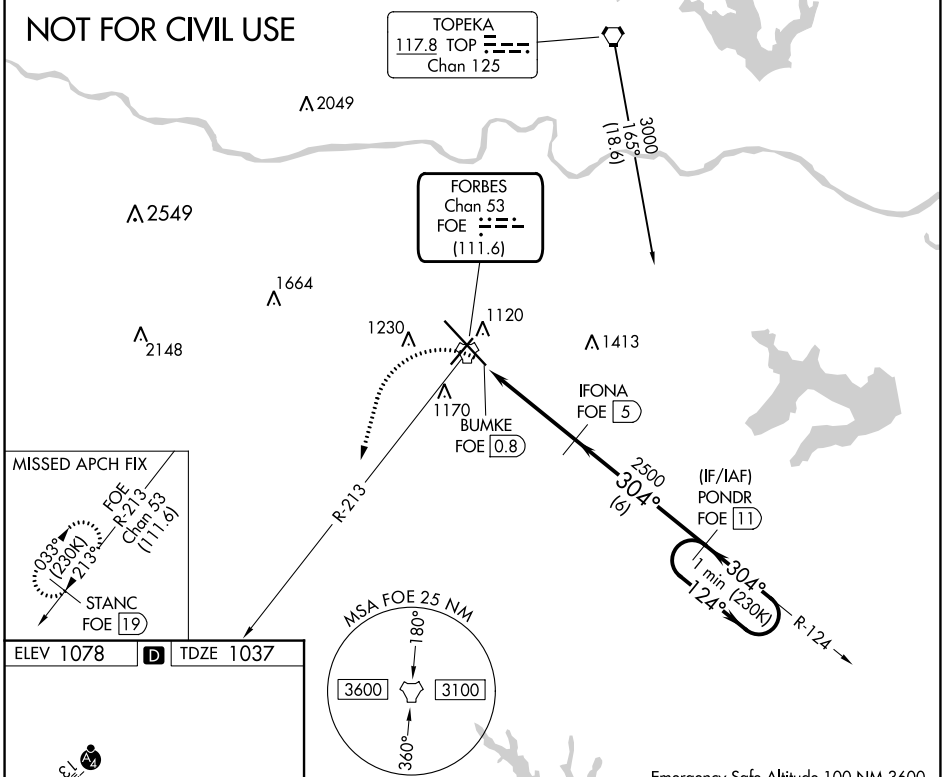
TACAN RWY 31

TOPEKA RGNL (F'OE)

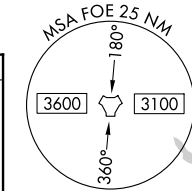
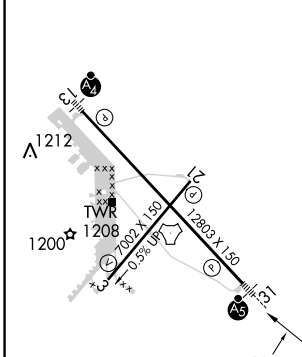
NA For inoperative ALS, increase S-31 Cats C/D/E visibility to 1 3/8 SM.	MALSR 	MISSED APPROACH: Climbing left turn to 3000 heading 190° and on FOE TACAN R-213 to STANC/19 DME and hold.
---	-----------	---

ATIS 128.25	KANSAS CITY CENTER 123.8 343.7	FORBES TOWER* 120.8 (CTAF) 0 340.2	GND CON 118.425 275.8	UNICOM 122.95
-----------------------	--	--	---------------------------------	-------------------------

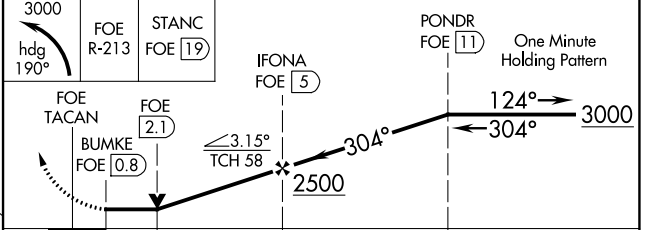
NOT FOR CIVIL USE



ELEV 1078	D	TDZE 1037
-----------	----------	-----------



Emergency Safe Altitude 100 NM 3600



FOE TACAN	FOE BUMKE	IFONA	POND R	STANC	FOE R-213
FOE 2.1	FOE 0.8	FOE 5	FOE 11	FOE 19	FOE 111.6
1.3	2.9 NM	6 NM			
CATEGORY	A	B	C	D	E
S-31	1500/24	463 (500-1/2)	1500/50	463 (500-1)	
C CIRCLING	1520-1 442 (500-1)	1580-1 502 (600-1)	1580-1 1/2 502 (600-1 1/2)	1700-2 622 (700-2)	1720-2 1/4 642 (700-2 1/4)

REIL Rws 3, 13 and 21
MIRL Rwy 3-21
HIRL Rwy 13-31

NC-2, 11 JUL 2024 to 08 AUG 2024

NC-2, 11 JUL 2024 to 08 AUG 2024