

LOC/DME I-TYK <b>110.7</b> Chan <b>44</b>	APP CRS <b>099°</b>	Rwy ldg <b>7016</b> TDZE <b>624</b> Apt Elev <b>624</b>
---	------------------------	---

# ILS or LOC RWY 10

CHERRY CAPITAL (TVC)

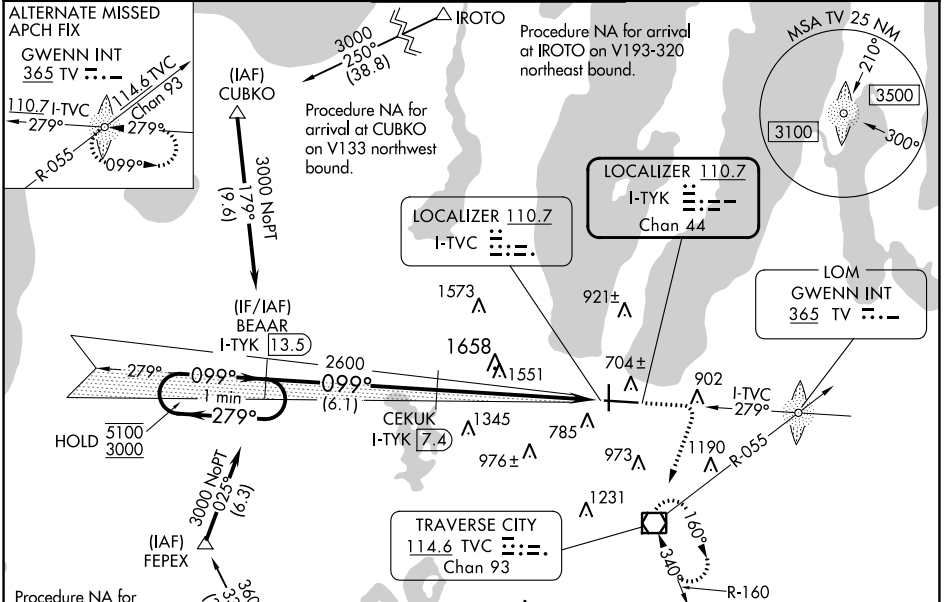
RNP APCH - GPS. From BABBE, or IROTO, or FEPEX or CUBKO.  
DME required.

**⚠** Rwy 10 helicopter visibility reduction below 3/4 SM NA.  
For inop ALS, increase S-ILS 10 all Cots visibility to 7/8 SM.

MALSRL  
**AS**

MISSED APPROACH: Climb to 1400 then climbing right turn to 4000 direct TVC VOR/DME and hold, continue climb-in-hold to 4000.

ATIS <b>119.175</b>	MINNEAPOLIS CENTER <b>132.9 338.3</b>	TRAVERSE CITY TOWER* <b>124.2 (CTAF) 348.6</b>	GND CON <b>121.8 348.6</b>	UNICOM <b>122.95</b>
------------------------	--	---	-------------------------------	-------------------------

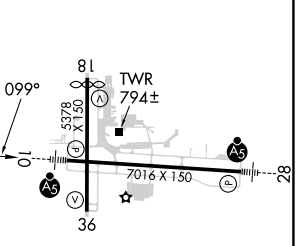
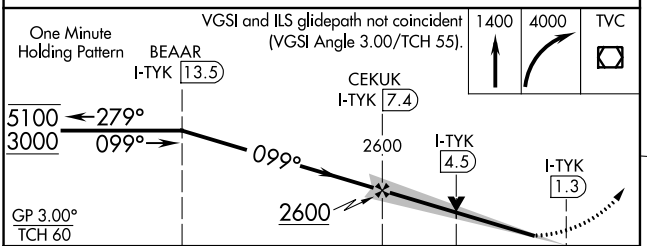


Procedure NA for arrival at IROTO on V193-320 northeast bound.

Procedure NA for arrival at CUBKO on V133 northwest bound.

Procedure NA for arrival at FEPEX on V420 westbound.

ELEV 624	<b>D</b> TDZE 624
----------	-------------------



CATEGORY	A	B	C	D
S-ILS 10	917-3/4 293 (300-3/4)			
S-LOC 10	1700-3/4 1076 (1100-3/4)	1700-1 1076 (1100-1)	1700-2 1/2 1076 (1100-2 1/2)	1076 (1100-2 1/2)
<b>C</b> CIRCLING	1700-1 1/4 1076 (1100-1 1/4)	1700-1 1/2 1076 (1100-1 1/2)	1700-3 1076 (1100-3)	1720-3 1096 (1100-3)

HIRL Rwy 10-28 **1**  
MIRL Rwy 18-36 **1**  
REIL Rwy 36 **1**

EC-1, 11 JUL 2024 to 08 AUG 2024

EC-1, 11 JUL 2024 to 08 AUG 2024