

VALPARAISO DESTIN FT WALTON BEACH, FLORIDA

ILS or LOC Y RWY 20

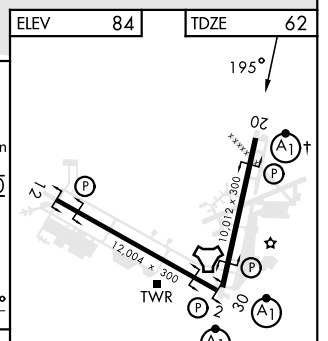
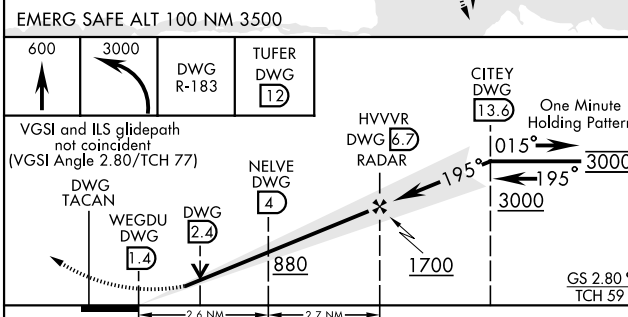
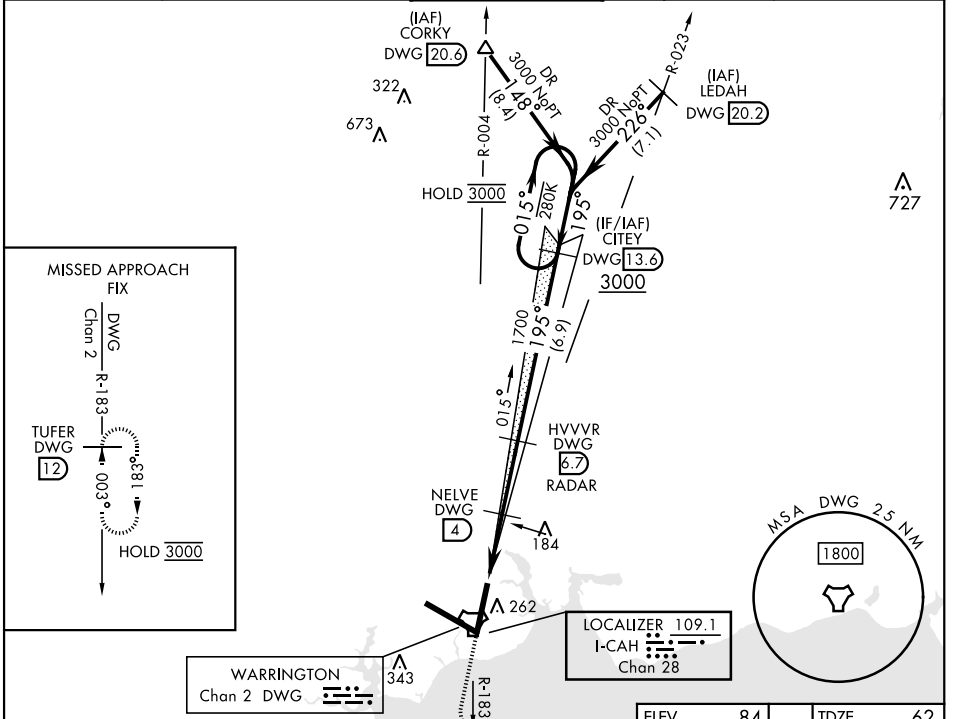
LOC/DME I-CAH 109.1 Chan 28	APCH CRS 195°	Rwy Idg 10,012 TDZE 62 Arprt Elev 84
---	-------------------------	---

[USAF]

EGLIN AFB DESTIN FORT WALTON BEACH (KVPS)

DME required	ALSF-1	MISSED APPROACH: Climb to 600, then climbing left turn to 3000 on DWG TACAN R-183 to TUFER/12 DME and hold.
--------------	--------	---

ATIS ★ 134.625 273.5	APP CON 125.1 281.45 271°-089° 132.1 360.6 090°-270°	TOWER 118.2 353.65	GND CON 121.8 335.8	CLNC DEL 127.7 377.2
--------------------------------	--	------------------------------	-------------------------------	--------------------------------



EMERG SAFE ALT 100 NM 3500	600	3000	DWG R-183	TUFER DWG 12
VGSI and ILS glidepath not coincident (VGSI Angle 2.80/TCH 77)	DWG TACAN	WEGDU DWG 1.4	DWG 2.4	NELVE DWG 4
	2.6 NM	2.7 NM	880	1700
	A	B	C	D
S-ILS 20 *	262/24		200	(200-½)
S-LOC 20 **	440/24	378 (400-½)	440/35	378 (400-¾)
⊙ CIRCLING	600-1	516 (600-1)	680-1½ 596 (600-½)	680-2 596 (600-2)
			700-2¼ 616 (700-2¼)	

ELEV	84	TDZE	62
† Rwy 20 apch lgt 1500' nonstandard. HIRL all rwys			
FAF to MAP 5.3 NM			
Knots	60	90	120 150 180
Min:Sec	5:18	3:32	2:39 2:07 1:46

VALPARAISO DESTIN FT WALTON BEACH, FLORIDA
Orig 16MAY24

EGLIN AFB DESTIN FORT WALTON BEACH (KVPS)
30°29'N-86°32'W

ILS or LOC Y RWY 20

SE-3, 11 JUL 2024 to 08 AUG 2024

SE-3, 11 JUL 2024 to 08 AUG 2024