

# RNAV (GPS) RWY 2

|          |           |        |
|----------|-----------|--------|
| APCH CRS | Rwy ldg   | 10,012 |
| 015°     | TDZE      | 59     |
|          | Arpt Elev | 84     |

[USAF] EGLIN AFB DESTIN FORT WALTON BEACH (KVPS)

RNP APCH- GPS

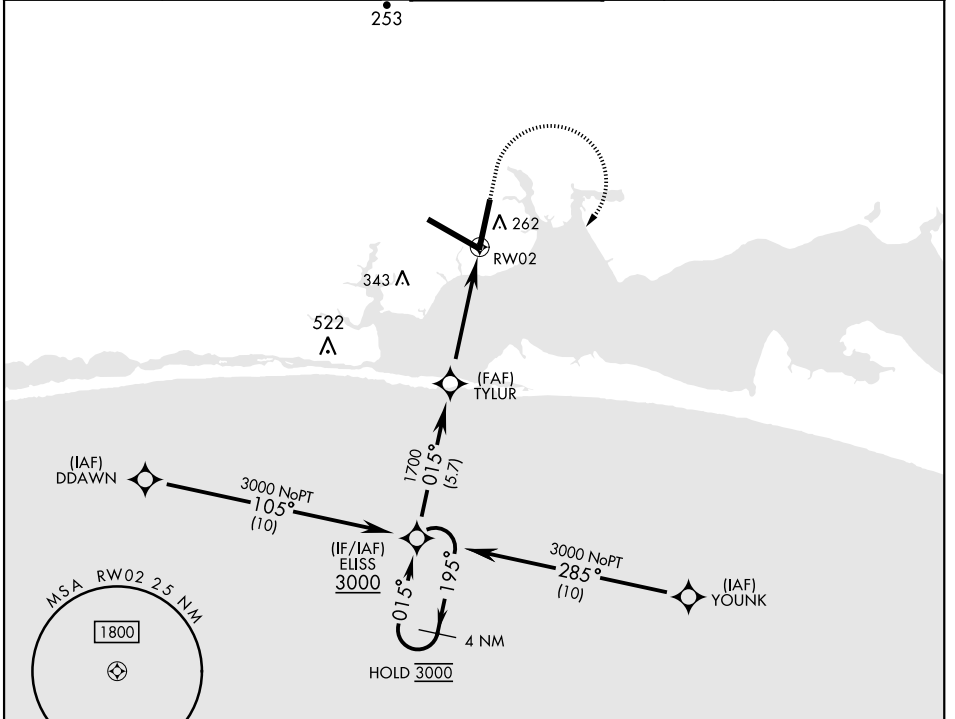
ALSIF-1

MISSED APPROACH: Climb to 600, then climbing right turn to 3000 direct ELISS and hold.

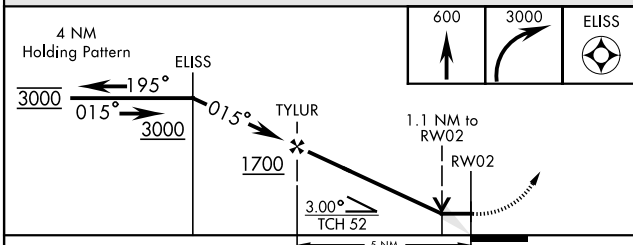
\* When ALS inop, increase CAT AB RVR to 55 and vis to 1 mile, CAT CDE RVR to 60, vis to 1 1/8 miles.



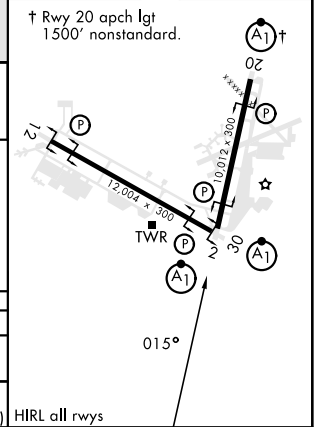
|               |   |              |             |             |
|---------------|---|--------------|-------------|-------------|
| ATIS ★        | APP CON   | TOWER        | GND CON     | CLNC DEL    |
| 134.625 273.5 | 125.1 281.45 271°-089°<br>132.1 360.6 090°-270° | 118.2 353.65 | 121.8 335.8 | 127.7 377.2 |



EMERG SAFE ALT 100 NM 3500



|      |    |      |    |
|------|----|------|----|
| ELEV | 84 | TDZE | 59 |
|------|----|------|----|



| CATEGORY  | A      | B            | C                            | D                    | E                            |
|-----------|--------|--------------|------------------------------|----------------------|------------------------------|
| LNAV MDA* | 460/24 | 401 (400-34) | 460/40                       | 401 (400-34)         |                              |
| CIRCLING  | 600-1  | 516 (600-1)  | 680-1 1/2<br>596 (600-1 1/2) | 680-2<br>596 (600-2) | 700-2 1/4<br>616 (700-2 1/4) |

HIRL all rwys

# RNAV (GPS) RWY 2

SE-3, 11 JUL 2024 to 08 AUG 2024

SE-3, 11 JUL 2024 to 08 AUG 2024