

TACAN RWY 20

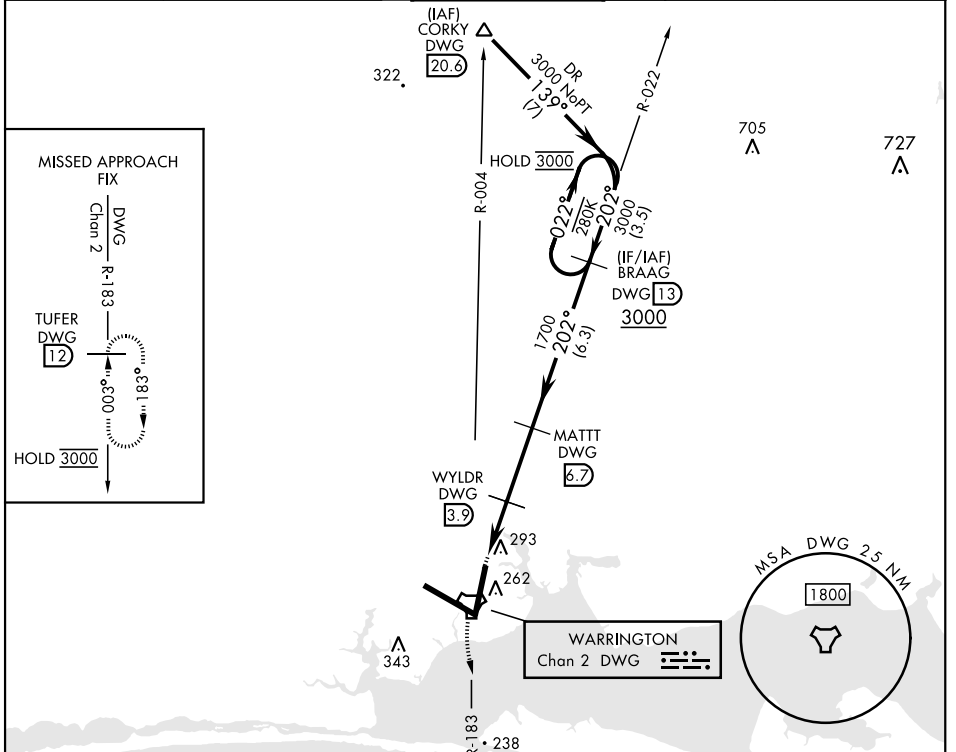
TACAN DWG Chan 2	APCH CRS 202°	Rwy ldg 10,012 TDZE 62 Arprt Elev 84
-------------------------	----------------------	---

[USAF] EGLIN AFB DESTIN FORT WALTON BEACH (KVPS)

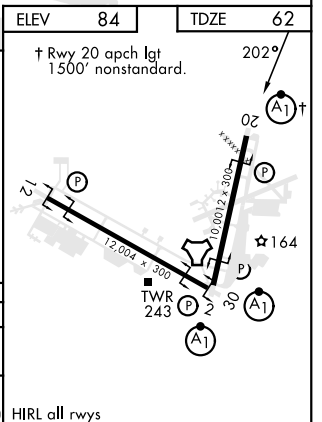
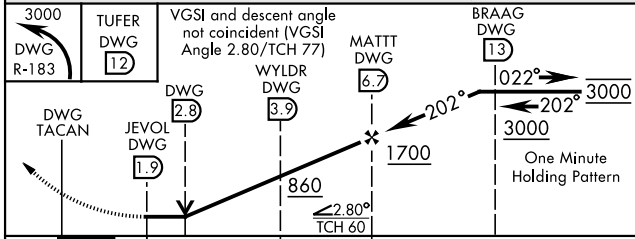
* When ALS inop, increase CAT AB RVR to 55 and vis to 1 mile, CAT CDE vis to 1 3/8 miles.

ALSF-1 MISSED APPROACH: Climbing left turn to 3000 and intercept DWG TACAN R-183 to TUFER/12 DME and hold.

ATIS ★ 134.625 273.5	APP CON 125.1 281.45 271°-089° 132.1 360.6 090°-270°	TOWER 118.2 353.65	GND CON 121.8 335.8	CLNC DEL 127.7 377.2
--------------------------------	--	------------------------------	-------------------------------	--------------------------------



EMERG SAFE ALT 100 NM 3500	ELEV 84	TDZE 62
----------------------------	---------	---------



CATEGORY	A	B	C	D	E
S-20 *	540/24 478 (500-1/2)		540/50 478 (500-1)		
CIRCLING	600-1 516 (600-1)		680-1 1/2 596 (600-1 1/2)	680-2 596 (600-2)	700-2 1/4 616 (700-2 1/4)

TACAN RWY 20

SE-3, 11 JUL 2024 to 08 AUG 2024

SE-3, 11 JUL 2024 to 08 AUG 2024