

VORTAC TRV <b>117.3</b> Chan 120	APP CRS <b>118°</b>	Rwy Idg TDZE Apt Elev	<b>7314</b> <b>23</b> <b>24</b>
--	------------------------	-----------------------------	---------------------------------------

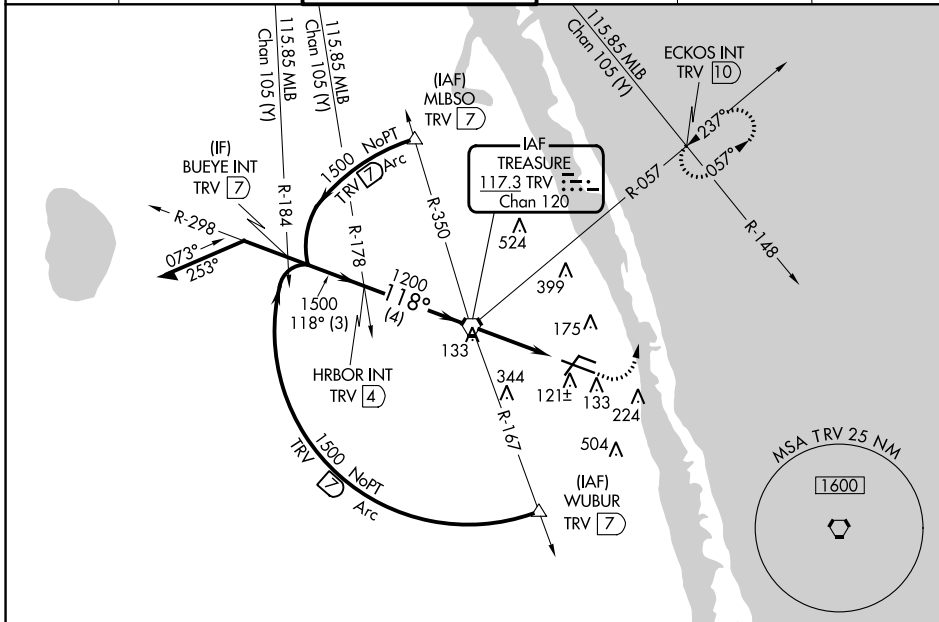
# VOR RWY 12R

VERO BEACH RGNL (VRB)

**⚠** Circling to Rwy 30R NA at night. When local altimeter setting not received, use Fort Pierce altimeter setting and increase all MDAs 40 feet and Circling Cat C/D visibility ¼ SM.

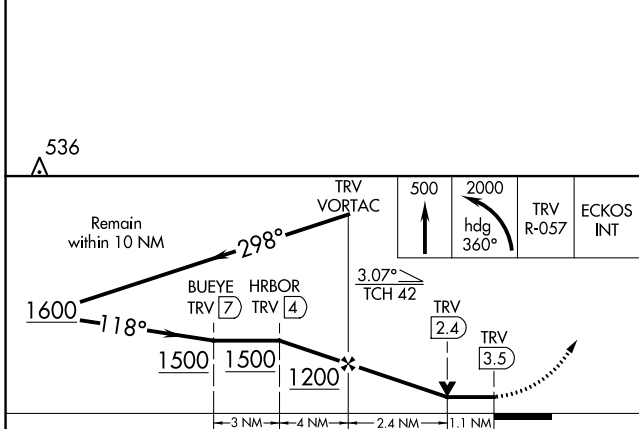
MISSED APPROACH: Climb to 500 then climbing left turn to 2000 heading 360° and on TRV VORTAC R-057 to ECKOS INT/TRV 10 DME and hold.

ATIS <b>120.575</b>	PALM BEACH APP CON <b>123.625 225.4 (N)</b>	VERO BEACH TOWER * <b>126.3 (CTAF) 0</b>	GND CON <b>127.45</b>	CLNC DEL <b>134.975</b>	UNICOM <b>122.95</b>
------------------------	--	---	--------------------------	----------------------------	-------------------------

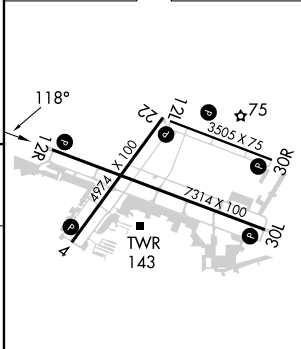


SE-3, 11 JUL 2024 to 08 AUG 2024

SE-3, 11 JUL 2024 to 08 AUG 2024



ELEV 24	<b>D</b> TDZE 23
---------	------------------



MRL Rwy 4-22, 12R-30L, and 12L-30R  
REIL Rwy 4, 12R, 22 and 30L

CATEGORY	A	B	C	D		
S-12R		400-1	377 (400-1)			
CIRCLING	560-1	536 (600-1)	660-1¾ 636 (700-1¾)	820-2½ 796 (800-2½)		
	FAF to MAP 3.5 NM					
	Knots	60	90	120	150	180
	Min:Sec	3:30	2:20	1:45	1:24	1:10