

VOR/DME VCT 109.0 Chan 27	APP CRS 127°	Rwy Idg TDZE Apt Elev 9111 115 115
--	------------------------	--

VOR RWY 13

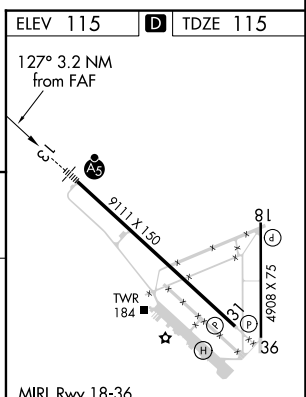
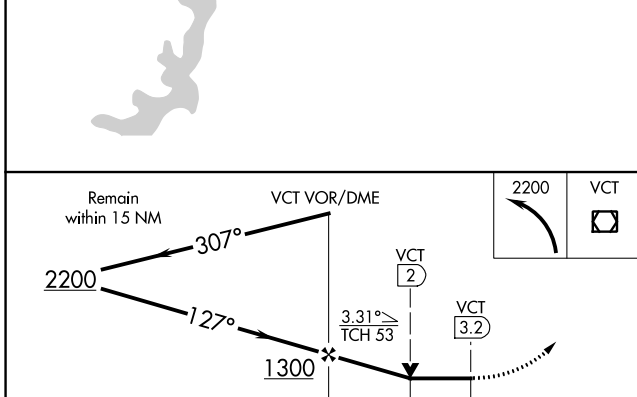
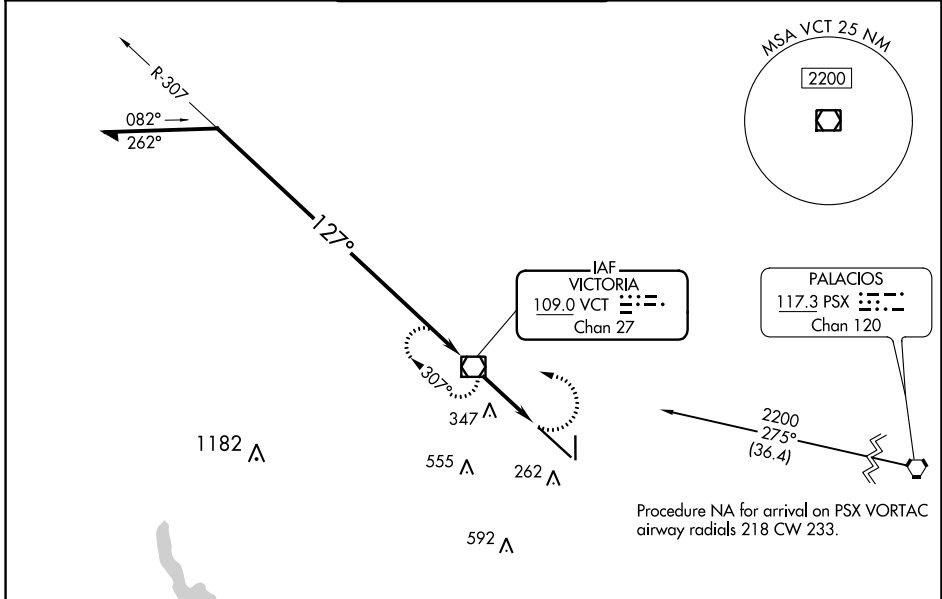
VICTORIA RGNL (VCT)

For inop ALS, increase Cat C/D/E visibility to 1 3/8 SM.

MALSR

MISSED APPROACH:
Climbing left turn to 2200
direct VCT VOR/DME and
hold, continue climb-in-hold
to 2200.

ATIS 119.025	HOUSTON CENTER 135.05 353.6	VICTORIA TOWER ★ 126.075 (CTAF) 0 257.95	GND CON 120.525 239.25	UNICOM 122.7
------------------------	---------------------------------------	--	----------------------------------	------------------------



CATEGORY	A	B	C	D	E
S-13	600-1/2	485 (500-1/2)	600-1	485 (500-1)	
CIRCLING	600-1	485 (500-1)	820-2 705 (800-2)	880-2 1/2 765 (800-2 1/2)	NA

ELEV 115					D TDZE 115				
127° 3.2 NM from FAF					2111 X 130				
MIRL Rwy 18-36					REIL Rwy 18 and 36				
HIRL Rwy 13-31					FAF to MAP 3.2 NM				
Knots	60	90	120	150	180				
Min:Sec	3:12	2:08	1:36	1:17	1:04				

SC-5, 11 JUL 2024 to 08 AUG 2024

SC-5, 11 JUL 2024 to 08 AUG 2024