

# HI-ILS or LOC Z RWY 15

LOC I-RJM <b>111.7</b>	APCH CRS <b>146°</b>	Rwy ldg <b>12,001</b> TDZE <b>294</b> Arpt Elev <b>294</b>
---------------------------	-------------------------	--

[USAF]

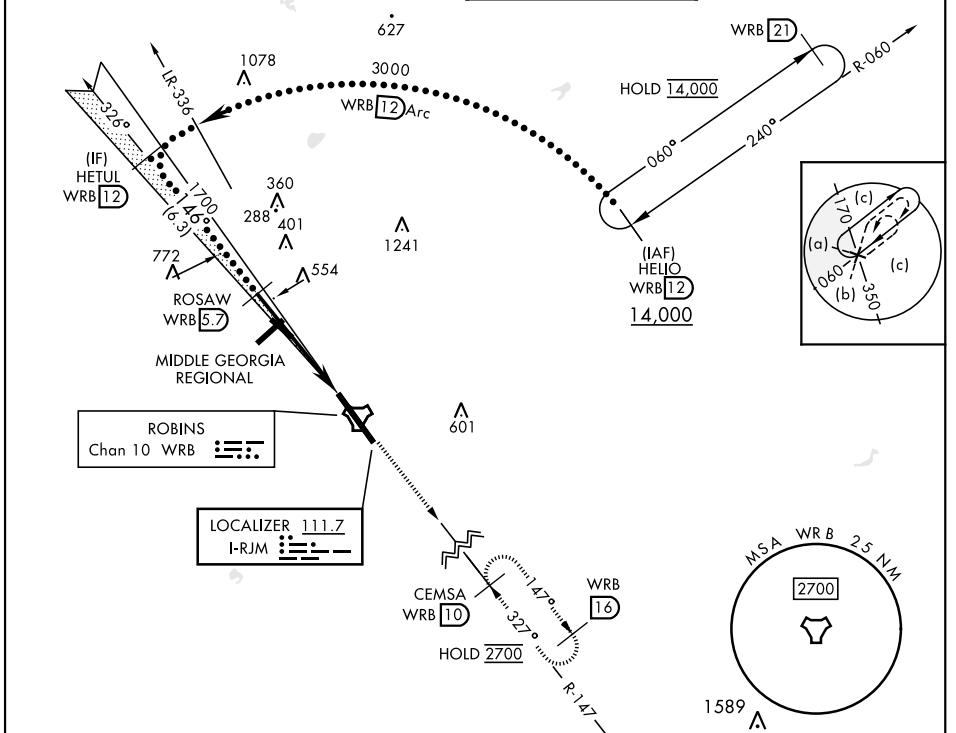
ROBINS AFB (KWRB)

\* When ALS inop, increase RVR to 40, vis to 3/4 mile.  
 \*\* When ALS inop, increase vis to 1 1/2 miles.  
 \*\*\* Circling not authorized SW of Rwy 15-33.



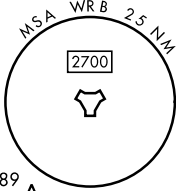
MISSED APPROACH: Climb To 2700 on WRB TACAN R-147 to CEMSA and hold.

ATIS <b>119.475 273.475</b>	ATLANTA APP CON <b>124.2 279.6</b>	TOWER <b>133.225 257.975</b>	GND CON <b>121.85 275.8</b>
--------------------------------	---------------------------------------	---------------------------------	--------------------------------



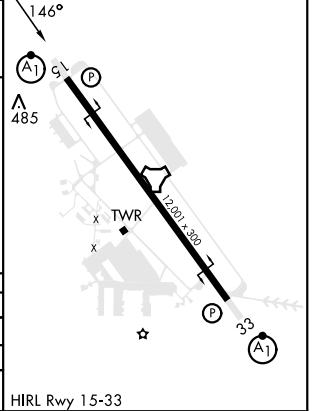
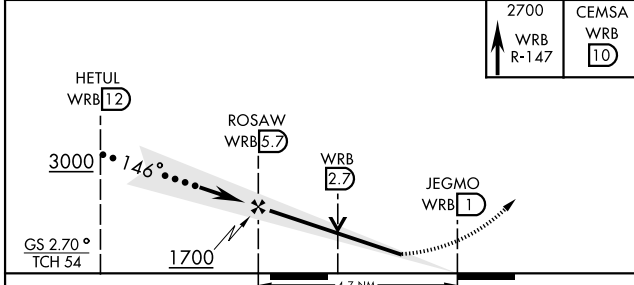
ROBINS  
Chan 10 WRB

LOCALIZER 111.7  
I-RJM



EMERG SAFE ALT 100 NM 3700

ELEV	294	TDZE	294
------	-----	------	-----



CATEGORY	C	D	E
S-ILS 15*	494/24	200	(200-1/2)
S-LOC 15**	840/60	546	(600-1 1/2)
***	880-1 1/2	960-2	1040-2 3/4
<b>CIRCLING</b>	586 (600-1 1/2)	666 (700-2)	746 (800-2 3/4)

HIRL Rwy 15-33

# HI-ILS or LOC Z RWY 15

SE-4, 11 JUL 2024 to 08 AUG 2024

SE-4, 11 JUL 2024 to 08 AUG 2024