

LOC/DME I-ASO <b>109.9</b> Chan <b>36</b>	APP CRS <b>149°</b>	Rwy Idg TDZE <b>13</b> Apt Elev <b>14</b>	<b>6869</b>
---	------------------------	---	-------------

# LDA Y RWY 19

## RONALD REAGAN WASHINGTON NTL (DCA)

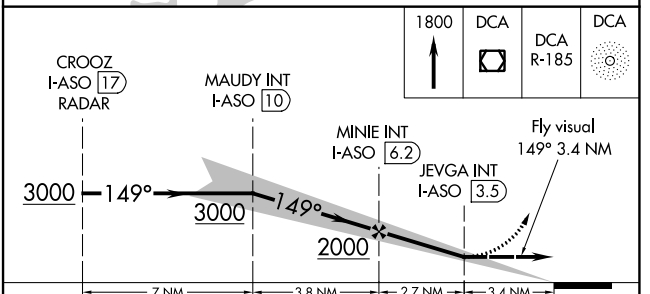
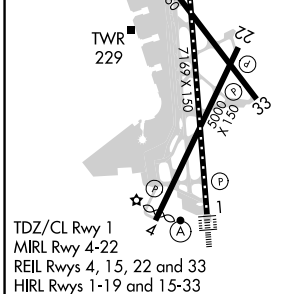
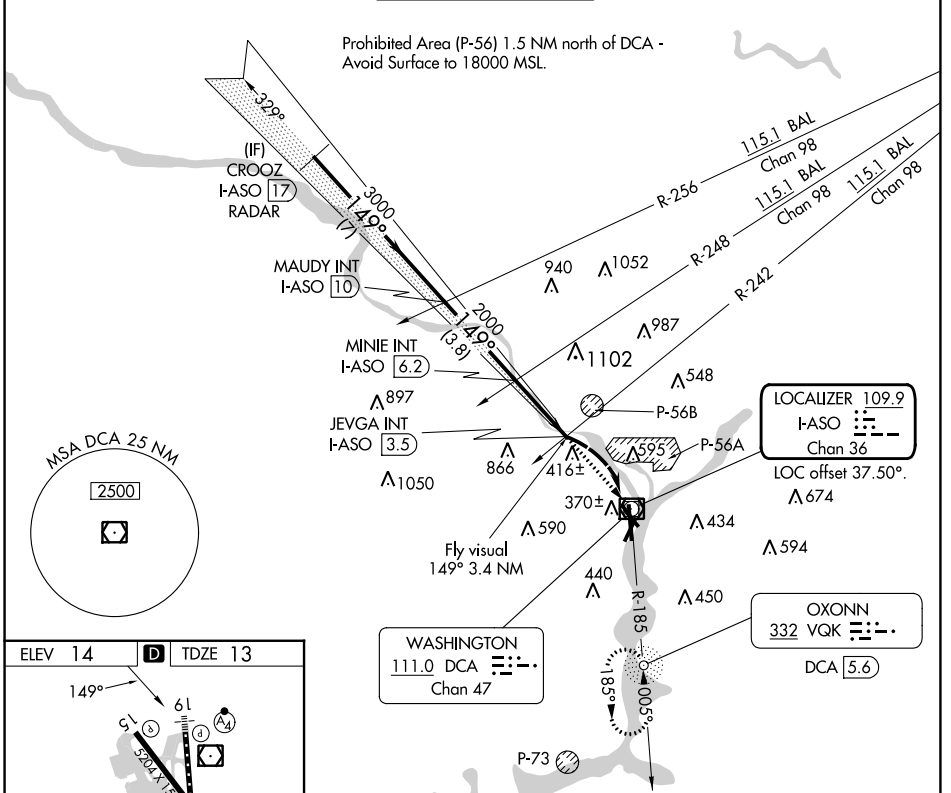
RADAR required for procedure entry. ADF or DME required.

**⚠** Circling NA northeast of Rwy 15-33. Inop table does not apply.  
**⚠** Rwy 19 helicopter visibility reduction below 1 SM NA.

MALSF

MISSED APPROACH: Climb to 1800 direct DCA VOR/DME and on DCA VOR/DME R-185 to OXONN NDB/DCA 5.6 DME and hold.

D-ATIS <b>132.65</b>	POTOMAC APP CON <b>119.85 239.25</b> (WEST/SOUTH) <b>124.2 360.8</b> (EAST)	WASHINGTON TOWER <b>119.1 257.6</b>	GND CON <b>121.7 257.6</b>	CLNC DEL <b>128.25</b>	CPDLC
-------------------------	---	--	-------------------------------	---------------------------	-------



FAF to MAP 2.7 NM					CATEGORY	A	B	C	D
Knots	60	90	120	150	180	S-LDA 19			
Min:Sec	2:42	1:48	1:21	1:05	0:54	<b>C</b> CIRCLING			
						1100-3 1087 (1100-3)			
						1100-3 1086 (1100-3)			

NE-3, 11 JUL 2024 to 08 AUG 2024

NE-3, 11 JUL 2024 to 08 AUG 2024