

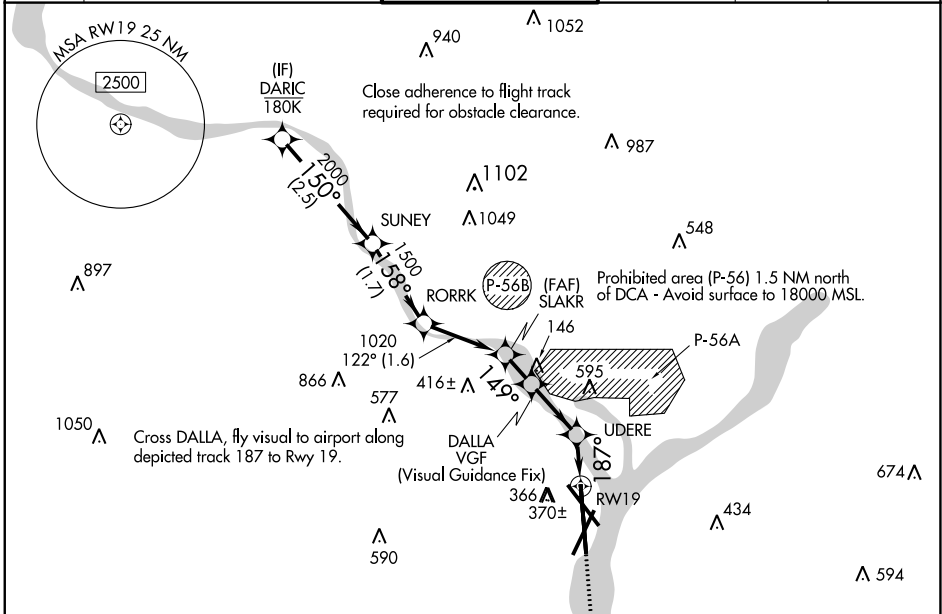
APP CRS	Rwy Idg	6869
187°	TDZE	13
	Apt Elev	14

RNAV (GPS) Y RWY 19

RONALD REAGAN WASHINGTON NTL (DCA)

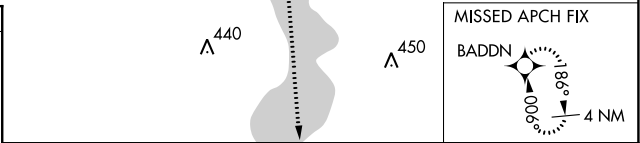
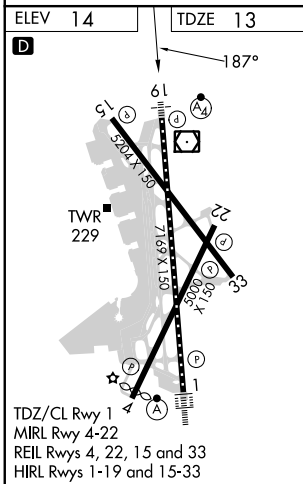
RNP APCH - GPS.	MALSFS A4	MISSED APPROACH: (Do not exceed 165K until Rwy 19) Climb to 3000 on FMS lateral path to Rwy 19, then direct BADDN and hold, continue climb-in-hold to 3000. If unable to follow the FMS lateral path, climb to 3000 and turn to heading 187° direct BADDN and hold, continue climb-in-hold to 3000.
RADAR required.		
<p>▼ Rwy 19 helicopter visibility reduction below ¾ SM NA. Inop table does not apply.</p>		

D-ATIS	POTOMAC APP CON (WEST/SOUTH) (EAST)	WASHINGTON TOWER	GND CON	CLNC DEL	CPDLC
132.65	119.85 239.25 124.2 360.8	119.1 257.6	121.7 257.6	128.25	

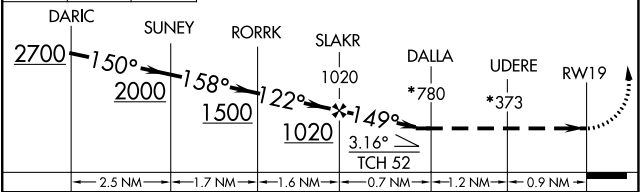


NE-3, 11 JUL 2024 to 08 AUG 2024

NE-3, 11 JUL 2024 to 08 AUG 2024



3000	FMS Lateral to RWY19	BADDN	*Check altitude. Turns required in the visual segment.
------	----------------------	-------	--



CATEGORY	A	B	C	D
LNAV MDA	780-2½		767 (800-2½)	