

SCRAM SIX DEPARTURE (RNAV)  
(SCRAM6, SCRAM) 31 DECO

WASHINGTON, DC  
RONALD REAGAN WASHINGTON NTL (DCA)

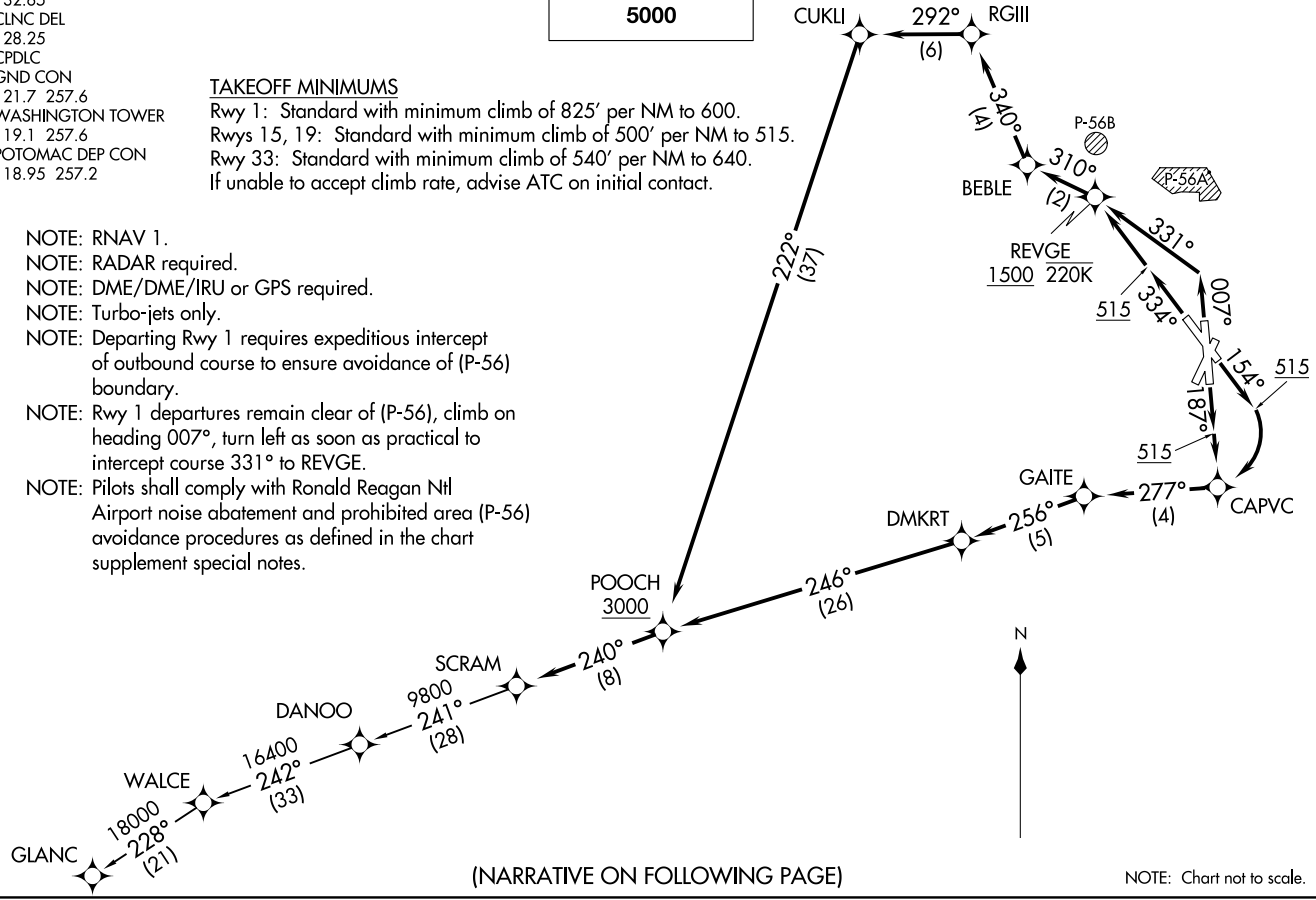
D-ATIS  
132.65  
CLNC DEL  
128.25  
CPDLC  
GND CON  
121.7 257.6  
WASHINGTON TOWER  
119.1 257.6  
POTOMAC DEP CON  
118.95 257.2

**TOP ALTITUDE:  
5000**

**TAKEOFF MINIMUMS**

Rwy 1: Standard with minimum climb of 825' per NM to 600.  
Rwys 15, 19: Standard with minimum climb of 500' per NM to 515.  
Rwy 33: Standard with minimum climb of 540' per NM to 640.  
If unable to accept climb rate, advise ATC on initial contact.

- NOTE: RNAV 1.
- NOTE: RADAR required.
- NOTE: DME/DME/IRU or GPS required.
- NOTE: Turbo-jets only.
- NOTE: Departing Rwy 1 requires expeditious intercept of outbound course to ensure avoidance of (P-56) boundary.
- NOTE: Rwy 1 departures remain clear of (P-56), climb on heading 007°, turn left as soon as practical to intercept course 331° to REVGE.
- NOTE: Pilots shall comply with Ronald Reagan Ntl Airport noise abatement and prohibited area (P-56) avoidance procedures as defined in the chart supplement special notes.



(NARRATIVE ON FOLLOWING PAGE)

(SCRAM6, SCRAM) 21112  
SCRAM SIX DEPARTURE (RNAV)

WASHINGTON, DC  
RONALD REAGAN WASHINGTON NTL (DCA)  
AL-443 (FAA)



DEPARTURE ROUTE DESCRIPTION

TAKEOFF RUNWAY 1: Climb on heading 007° to intercept course 331° to REVGE, cross REVGE at or above 1500 and at or below 220K, then on track 310° to BEBLE, then on track 340° to RGIII, then on track 292° to CUKLI, then on track 222° to POOCH, cross POOCH at or above 3000, thence . . . .

TAKEOFF RUNWAY 15: Climb on heading 154° to 515, then right turn direct CAPVC, then on track 277° to GAITE, then on track 256° to DMKRT, then on track 246° to POOCH, cross POOCH at or above 3000, thence . . . .

TAKEOFF RUNWAY 19: Climb on heading 187° to 515, then direct CAPVC, then on track 277° to GAITE, then on track 256° to DMKRT, then on track 246° to POOCH, cross POOCH at or above 3000, thence . . . .

TAKEOFF RUNWAY 33: Climb on heading 334° to 515, then direct REVGE, cross REVGE at or above 1500 and at or below 220K, then on track 310° to BEBLE, then on track 340° to RGIII, then on track 292 ° to CUKLI, then on track 222° to POOCH, cross POOCH at or above 3000, thence . . . .

. . . . then on track 240° to SCRAM, then as depicted. Maintain 5000.  
Expect clearance to filed altitude within 10 minutes after departure.

GLANC TRANSITION (SCRAM6.GLANC):

NE-3, 11 JUL 2024 to 08 AUG 2024

NE-3, 11 JUL 2024 to 08 AUG 2024