

WAAS CH 77817 W02A	APP CRS 024°	Rwy Idg TDZE Apt Elev	9000 264 270
--	------------------------	-----------------------------	---

RNAV (GPS) RWY 2

WESTFIELD-BARNES RGNL (BAF)

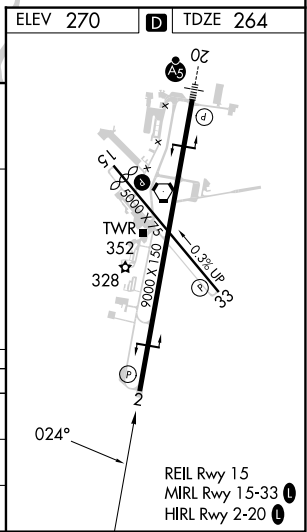
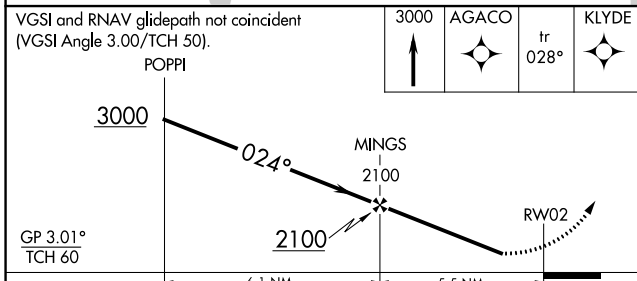
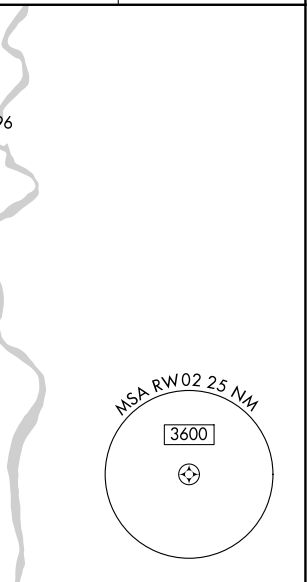
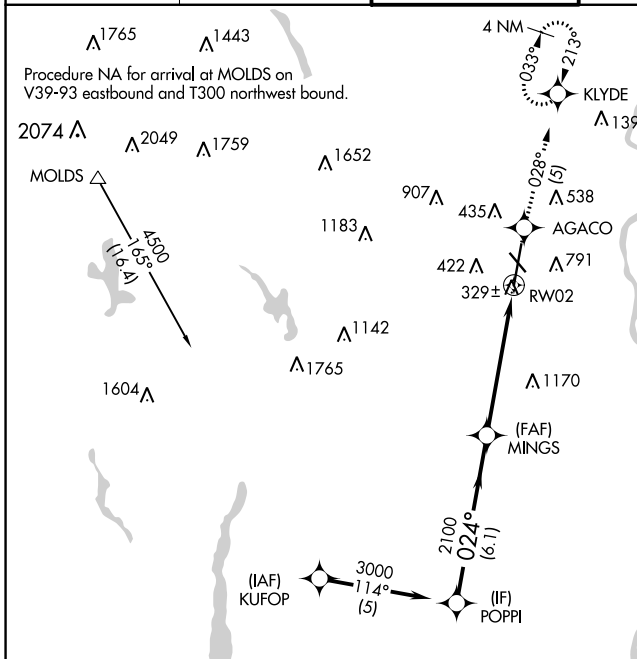
RNP APCH.

Baro-VNAV NA when using Bradley Intl altimeter setting. For uncompensated Baro-VNAV systems, LNAV/VNAV NA below -15°C or above 54°C.

When local altimeter setting not received, use Bradley Intl altimeter setting and increase all DA 44 feet and all MDA 60 feet; increase LNAV/VNAV all Cats visibility ¼ mile. Rwy 2 helicopter visibility reduction below ¾ SM NA.

MISSED APPROACH: Climb to 3000 direct AGACO and on track 028° to KLYDE and hold, continue climb-in-hold to 3000.

ATIS 127.1 263.15	BRADLEY APP CON 125.35 281.5	WESTFIELD TOWER* 118.9 (CTAF) 251.1	GND CON 121.7 289.4	CLNC DEL 121.7
-----------------------------	--	---	-------------------------------	--------------------------



CATEGORY	A	B	C	D	E
LPV DA	515-1 251 (300-1)				
LNAV/VNAV DA	858-2 594 (600-2)				
LNAV MDA	1360-1¼ 1096 (1100-1¼)	1360-1½ 1096 (1100-1½)	1360-3	1096 (1100-3)	

NE-1, 11 JUL 2024 to 08 AUG 2024

NE-1, 11 JUL 2024 to 08 AUG 2024

REIL Rwy 15
MIRL Rwy 15-33
HIRL Rwy 2-20